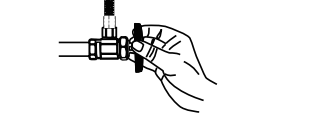


Installation Instructions

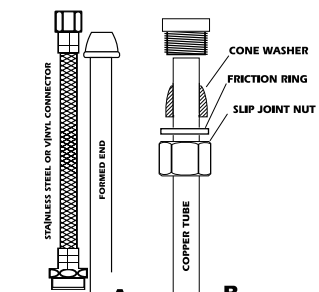
4" Center Washerless Lavatory Faucets

1. Shut off water supply and remove old faucet.



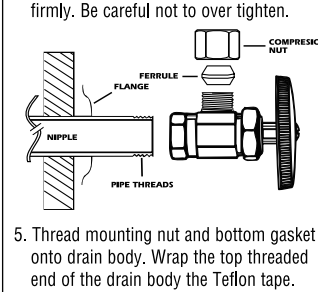
2. Place faucet in position on the sink. From under the sink, place mounting nuts on the threaded shanks and tighten nuts. Install plastic deck plate gasket under faucet. Suitable for model code #WV13100 #WV13740

3. A. This faucet is designed for supply tubes with formed ends or flexible supply lines with built in nuts. B. If you have copper tube supplies assemble as illustrated. Insert tube all the way into threaded shank with care. Do not over tighten. WARNING: Never use lead on copper supply only.

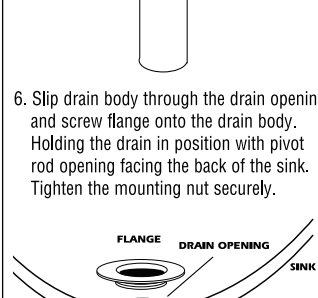


4. Connect hot and cold water supply tubes to shut off valves and to faucet. Tighten firmly. Be careful not to over tighten.

5. Thread mounting nut and bottom gasket onto drain body. Wrap the top threaded end of the drain body the Teflon tape.

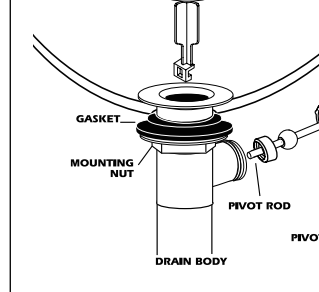


6. Slip drain body through the drain opening and screw flange onto the drain body. Holding the drain in position with pivot rod opening facing the back of the sink. Tighten the mounting nut securely.

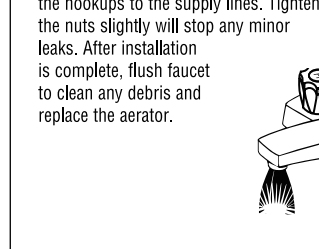
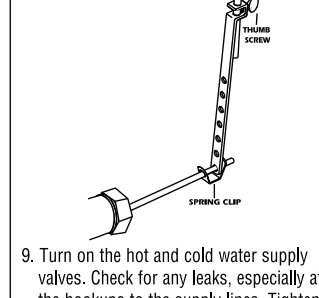


7. Place pivot rod in pivot rod opening. Slide pivot nut over the pivot rod and thread it on the drain body. Tighten firmly, be careful not to over tighten.

8. Insert lift rod through the lift rod strap and secure with the thumb screw. Then guide the pivot rod through on the holes on the lift rod strap and secure it with the spring clip, then adjust the height of the lift rod by resetting the screw.



9. Turn on the hot and cold water supply valves. Check for any leaks, especially at the hookups to the supply lines. Tightening the nuts slightly will stop any minor leaks. After installation is complete, flush faucet to clean any debris and replace the aerator.

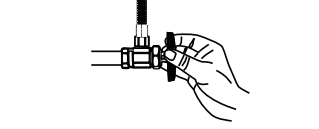


1042 308

Instructions d'installation

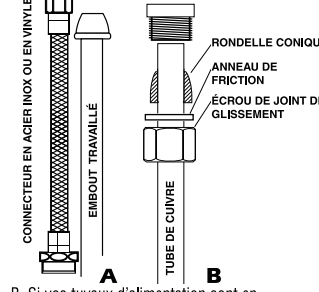
Robineets de lavabo de 4 po centrés, sans rondelle

1. Couper l'alimentation d'eau et retirer le vieux robinet.



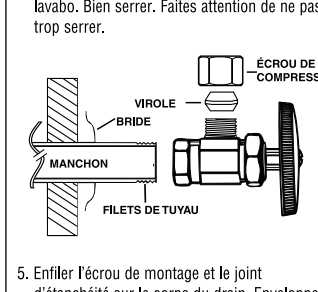
2. Positionner le robinet sur l'évier. En passant sous l'évier, placer les écrous de montage sur les tiges fileées et serrer les écrous. Installer le joint d'étanchéité de plastique sous le robinet. Conçu pour les raccords en cuivre ou en acier. \*Option: Si la surface est irrégulière ou rugueuse, du mastic de plombier ou de la silicone pour le scelliment peut être utilisé pour l'étanchéité. Le mastic peut avoir une réaction adverse sur des similambrures ou de la pierre naturelle. Dans ce cas une silicone de haute qualité doit être utilisée.

3. A. Ce robinet est conçu pour les tuyaux d'alimentation avec embouts travaillés ou les conduites d'alimentation flexibles avec écrous intégrés. B. Si vos tuyaux d'alimentation ont un bout en cuivre, faites le montage tel qu'illustré. Insérer complètement et délicatement le tuyau dans la tige fileée. Ne pas serrer trop fort. AVERTISSEMENT: Les éléments illustrés sur la figure B concernent uniquement les tuyaux d'alimentation en cuivre.

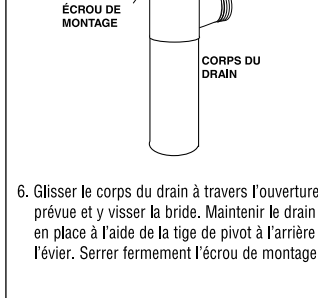


4. Connecter les tuyaux d'alimentation en eau chaude et froide aux robinets d'arrêt et au lavabo. Bien serrer. Faites attention de ne pas trop serrer.

5. Enfiler l'écrou de montage et le joint d'étanchéité sur le corps du drain. Envelopper le bout fileté supérieur du corps du drain de ruban de téflon.



6. Glisser le corps du drain à travers l'ouverture prévue et visser la bride. Maintenir le drain en place à l'aide de la tige de pivot à l'arrière de l'évier. Serrer fermement l'écrou de montage.



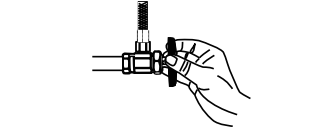
7. Positionner la tige de pivot dans l'ouverture prévue. Glisser l'écrou de pivot sur la tige de pivot et visser-4 contre le corps du drain. Serrer fermement en faisant attention de ne pas trop serrer.

1042 308

Instrucciones de instalación

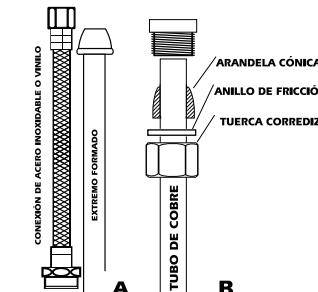
4" Arandela central menos el lava mano

1. Cierre el suministro de agua y retire el grifo usado.



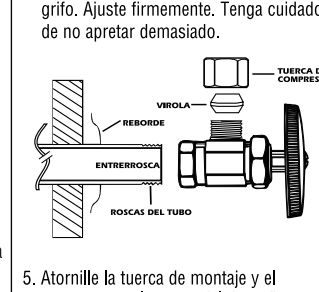
2. Coloque el grifo en el lavabo, coloque las tuercas del montaje en los ejes roscados. Instale la junta para placa de cubierta plástica debajo del grifo. \*Opción: Si la superficie de la tarja está despareja o irregular, puede usarse mastic de plomo o sellador de silicon para crear un sello hermético. El mastic de plomo puede tener una reacción adversa con algunos mármoles acabados o piedra natural. En estos casos puede usarse un sellador de silicon de alta calidad.

3. A. Este grifo está diseñado para tubos de suministros de extremos formados o con tuercas integradas. B. Si tiene tubos de suministro de cobre. B. Si tiene tubos de suministro de cobre. Ensamble como se ilustra. Inserte el tubo en el grifo con cuidado. No ajuste demasiado. AVISO: Las partes que se muestran en B son solamente para tubos de cobre.

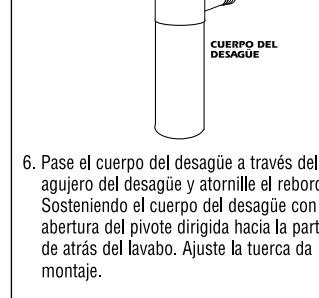


4. Conecte los tubos de suministro de agua caliente y fría a las llaves de paso y al grifo. Ajuste firmemente. Tenga cuidado de no apretar demasiado.

5. Atornille la tuerca de montaje y el empaque en el cuerpo del desagüe. Envuelva la parte roscada del cuerpo con cinta Teflon.



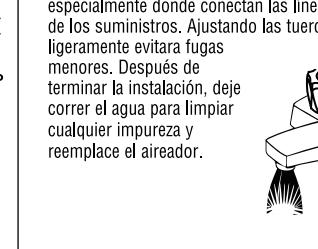
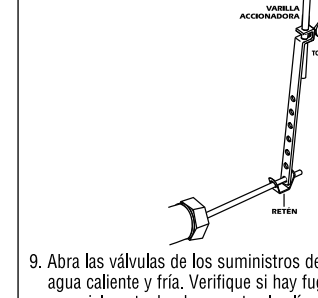
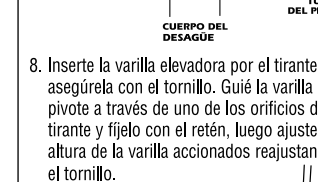
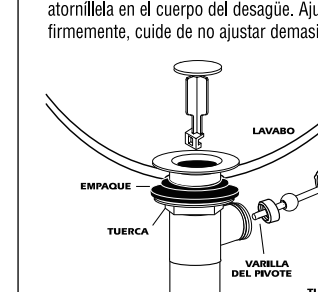
6. Pase el cuerpo del desagüe a través del agujero del desagüe y atornille el anillo de fricción. Sosteniendo el cuerpo del desagüe con la abertura del pivote dirigida hacia la parte de atrás del lavabo. Ajuste la tuerca da montaje.



7. Coloque la varilla en la abertura del pivote. Pase la tuerca a través de la varilla y atornille en el cuerpo del desagüe. Ajuste firmemente, cuide de no ajustar demasiado.

1042 308

8. Abra las válvulas de los suministros de agua caliente y fría. Verifique si hay fugas, especialmente donde conectan las líneas de los suministros. Ajustando las tuercas ligeramente evitara fugas menores. Después de terminar la instalación, deje correr el agua para limpiar cualquier impureza y reemplace el aerador.



1042 308

© 2008 Wolskeley Distributed Exclusively by Ferguson, Stock Building Supply and Wolskeley Canada

© 2008 Wolskeley Distributed Exclusively by Ferguson, Stock Building Supply and Wolskeley Canada

© 2008 Wolskeley Distributed Exclusively by Ferguson, Stock Building Supply and Wolskeley Canada

© 2008 Wolskeley Distributed Exclusively by Ferguson, Stock Building Supply and Wolskeley Canada

© 2008 Wolskeley Distributed Exclusively by Ferguson, Stock Building Supply and Wolskeley Canada

© 2008 Wolskeley Distributed Exclusively by Ferguson, Stock Building Supply and Wolskeley Canada

© 2008 Wolskeley Distributed Exclusively by Ferguson, Stock Building Supply and Wolskeley Canada

© 2008 Wolskeley Distributed Exclusively by Ferguson, Stock Building Supply and Wolskeley Canada

© 2008 Wolskeley Distributed Exclusively by Ferguson, Stock Building Supply and Wolskeley Canada

© 2008 Wolskeley Distributed Exclusively by Ferguson, Stock Building Supply and Wolskeley Canada

© 2008 Wolskeley Distributed Exclusively by Ferguson, Stock Building Supply and Wolskeley Canada

© 2008 Wolskeley Distributed Exclusively by Ferguson, Stock Building Supply and Wolskeley Canada

© 2008 Wolskeley Distributed Exclusively by Ferguson, Stock Building Supply and Wolskeley Canada

© 2008 Wolskeley Distributed Exclusively by Ferguson, Stock Building Supply and Wolskeley Canada

© 2008 Wolskeley Distributed Exclusively by Ferguson, Stock Building Supply and Wolskeley Canada

© 2008 Wolskeley Distributed Exclusively by Ferguson, Stock Building Supply and Wolskeley Canada

© 2008 Wolskeley Distributed Exclusively by Ferguson, Stock Building Supply and Wolskeley Canada

© 2008 Wolskeley Distributed Exclusively by Ferguson, Stock Building Supply and Wolskeley Canada

© 2008 Wolskeley Distributed Exclusively by Ferguson, Stock Building Supply and Wolskeley Canada

© 2008 Wolskeley Distributed Exclusively by Ferguson, Stock Building Supply and Wolskeley Canada

© 2008 Wolskeley Distributed Exclusively by Ferguson, Stock Building Supply and Wolskeley Canada

© 2008 Wolskeley Distributed Exclusively by Ferguson, Stock Building Supply and Wolskeley Canada

© 2008 Wolskeley Distributed Exclusively by Ferguson, Stock Building Supply and Wolskeley Canada

© 2008 Wolskeley Distributed Exclusively by Ferguson, Stock Building Supply and Wolskeley Canada

© 2008 Wolskeley Distributed Exclusively by Ferguson, Stock Building Supply and Wolskeley Canada

© 2008 Wolskeley Distributed Exclusively by Ferguson, Stock Building Supply and Wolskeley Canada

© 2008 Wolskeley Distributed Exclusively by Ferguson, Stock Building Supply and Wolskeley Canada

© 2008 Wolskeley Distributed Exclusively by Ferguson, Stock Building Supply and Wolskeley Canada

© 2008 Wolskeley Distributed Exclusively by Ferguson, Stock Building Supply and Wolskeley Canada

© 2008 Wolskeley Distributed Exclusively by Ferguson, Stock Building Supply and Wolskeley Canada

© 2008 Wolskeley Distributed Exclusively by Ferguson, Stock Building Supply and Wolskeley Canada

© 2008 Wolskeley Distributed Exclusively by Ferguson, Stock Building Supply and Wolskeley Canada

© 2008 Wolskeley Distributed Exclusively by Ferguson, Stock Building Supply and Wolskeley Canada

© 2008 Wolskeley Distributed Exclusively by Ferguson, Stock Building Supply and Wolskeley Canada

© 2008 Wolskeley Distributed Exclusively by Ferguson, Stock Building Supply and Wolskeley Canada

© 2008 Wolskeley Distributed Exclusively by Ferguson, Stock Building Supply and Wolskeley Canada

© 2008 Wolskeley Distributed Exclusively by Ferguson, Stock Building Supply and Wolskeley Canada

© 2008 Wolskeley Distributed Exclusively by Ferguson, Stock Building Supply and Wolskeley Canada

© 2008 Wolskeley Distributed Exclusively by Ferguson, Stock Building Supply and Wolskeley Canada

© 2008 Wolskeley Distributed Exclusively by Ferguson, Stock Building Supply and Wolskeley Canada

© 2008 Wolskeley Distributed Exclusively by Ferguson, Stock Building Supply and Wolskeley Canada

© 2008 Wolskeley Distributed Exclusively by Ferguson, Stock Building Supply and Wolskeley Canada

© 2008 Wolskeley Distributed Exclusively by Ferguson, Stock Building Supply and Wolskeley Canada

© 2008 Wolskeley Distributed Exclusively by Ferguson, Stock Building Supply and Wolskeley Canada

© 2008 Wolskeley Distributed Exclusively by Ferguson, Stock Building Supply and Wolskeley Canada

© 2008 Wolskeley Distributed Exclusively by Ferguson, Stock Building Supply and Wolskeley Canada

© 2008 Wolskeley Distributed Exclusively by Ferguson, Stock Building Supply and Wolskeley Canada

© 2008 Wolskeley Distributed Exclusively by Ferguson, Stock Building Supply and Wolskeley Canada

© 2008 Wolskeley Distributed Exclusively by Ferguson, Stock Building Supply and Wolskeley Canada

© 2008 Wolskeley Distributed Exclusively by Ferguson, Stock Building Supply and Wolskeley Canada

© 2008 Wolskeley Distributed Exclusively by Ferguson, Stock Building Supply and Wolskeley Canada

© 2008 Wolskeley Distributed Exclusively by Ferguson, Stock Building Supply and Wolskeley Canada

© 2008 Wolskeley Distributed Exclusively by Ferguson, Stock Building Supply and Wolskeley Canada

© 2008 Wolskeley Distributed Exclusively by Ferguson, Stock Building Supply and Wolskeley Canada

© 2008 Wolskeley Distributed Exclusively by Ferguson, Stock Building Supply and Wolskeley Canada

© 2008 Wolskeley Distributed Exclusively by Ferguson, Stock Building Supply and Wolskeley Canada

© 2008 Wolskeley Distributed Exclusively by Ferguson, Stock Building Supply and Wolskeley Canada

© 2008 Wolskeley Distributed Exclusively by Ferguson, Stock Building Supply and Wolskeley Canada

© 2008 Wolskeley Distributed Exclusively by Ferguson, Stock Building Supply and Wolskeley Canada

© 2008 Wolskeley Distributed Exclusively by Ferguson, Stock Building Supply and Wolskeley Canada

© 2008 Wolskeley Distributed Exclusively by Ferguson, Stock Building Supply and Wolskeley Canada

© 2008 Wolskeley Distributed Exclusively by Ferguson, Stock Building Supply and Wolskeley Canada

© 2008 Wolskeley Distributed Exclusively by Ferguson, Stock Building Supply and Wolskeley Canada

© 2008 Wolskeley Distributed Exclusively by Ferguson, Stock Building Supply and Wolskeley Canada

© 2008 Wolskeley Distributed Exclusively by Ferguson, Stock Building Supply and Wolskeley Canada

© 2008 Wolskeley Distributed Exclusively by Ferguson, Stock Building Supply and Wolskeley Canada

© 2008 Wolskeley Distributed Exclusively by Ferguson, Stock Building Supply and Wolskeley Canada

© 2008 Wolskeley Distributed Exclusively by Ferguson, Stock Building Supply and Wolskeley Canada

© 2008 Wolskeley Distributed Exclusively by Ferguson, Stock Building Supply and Wolskeley Canada

© 2008 Wolskeley Distributed Exclusively by Ferguson, Stock Building Supply and Wolskeley Canada

© 2008 Wolskeley Distributed Exclusively by Ferguson, Stock Building Supply and Wolskeley Canada

© 2008 Wolskeley Distributed Exclusively by Ferguson, Stock Building Supply and Wolskeley Canada

© 2008 Wolskeley Distributed Exclusively by Ferguson, Stock Building Supply and Wolskeley Canada

© 2008 Wolskeley Distributed Exclusively by Ferguson, Stock Building Supply and Wolskeley Canada

© 2008 Wolskeley Distributed Exclusively by Ferguson, Stock Building Supply and Wolskeley Canada