



Compact  
Fluorescent Trim

## 6" Pro-Optic™ Alzak Open Wall Washer 2 Horizontal Quad Tube Lamps

Recessed

Non-IC

Type \_\_\_\_\_

-21

P8032 ☐

### Finish

Catalog No. Clear Alzak

P8032 -21

### Dimensions (Inches)

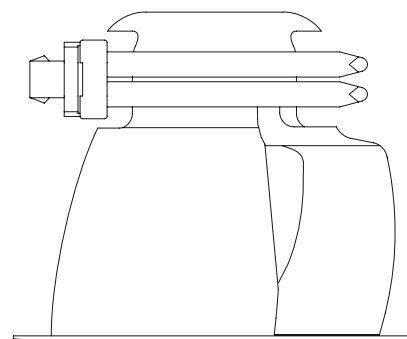
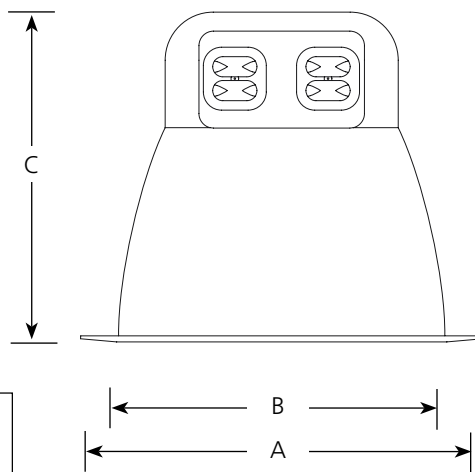
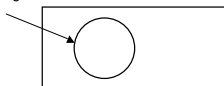
A B C  
7 5-3/4 5-3/4

Maximum Ceiling Thickness: 1-1/4"

Ceiling Cutout: 6-1/4" (See guide for retrofit)

P163H, P168H, P16H		
HOUSING COMPATIBILITY GUIDE		
ORDERING GUIDELINES	6 INCH OPENING RANGE	
	MIN	MAX
REQUIRES SD HOUSING OPTION	5-15/16	6-1/8
ALL STANDARD HOUSINGS	6-1/8	6-1/2
ONLY P8030 SERIES TRIMS AVAILABLE: 'WF' OPTION	6-1/2	6-7/8

Dimensions shown are for the diameter of the frame flange at it's narrowest point



### Lamp Wattage

#### Housings

New Construction	Retrofit	IC	Non-IC
P63-EB	P163H-EB	N/A	2-13w Quad tube
P68-EB	P168H-EB	N/A	2-18w Quad tube
P66-EB	P166H-EB	N/A	2-26w Quad tube
P66-DM	P16H-DM	N/A	2-26w Quad tube

### Specifications:

#### Flange

- White painted metal flange

#### Reflector

- All aluminum construction
- One piece construction with integral white painted flange
- No light leaks around trim flange
- Socket box mounts to trim for optimum performance and consistent lamp position
- Reflector retention accomplished by spring clips located in aperture of housing
- Anodized Alzak finish

#### Kicker

- Clear diffuse anodized finish
- Mounted in a recessed frame
- Minimal high angle brightness

#### Labeling

- cCSAus listed for damp locations
- Non-IC rated

Progress Lighting  
701 Millennium Blvd.  
Greenville, South Carolina  
29607



**P66-EB/P8032-21**

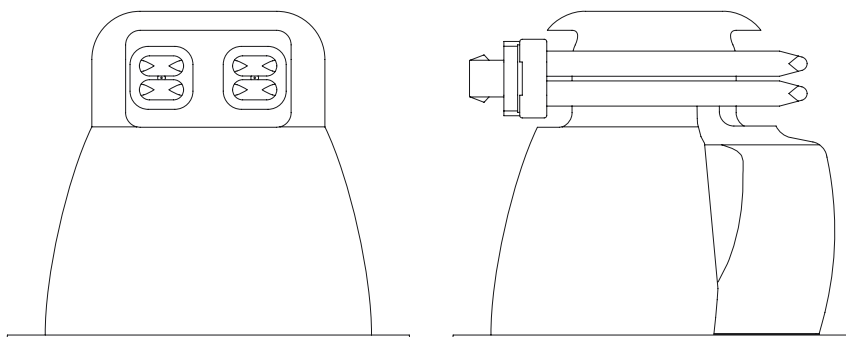
**6" Pro-Optic Alzak Wall Washer**

Report No. 539-PRO

No. Lamps: 2    Type: 2-F26DBX/SPX27/4P-GE    Lumens: 3420

Fixture Efficiency: 36.2%

S/MH Ratio: 1.0 (0°)    1.3 (90°)



**INITIAL FOOTCANDLE READINGS**

Two Feet from Wall						
Dist from Ceiling	Two Foot Centers			Three Foot Centers		
	Fixture	Mid Point	Fixture	Fixture	Mid Point	Fixture
1	53.5	45.1	53.5	40.1	27.4	40.1
2	80.8	78.3	80.8	59.0	48.1	59.0
3	68.5	69.4	68.5	47.5	45.2	47.5
4	51.5	52.2	51.5	35.5	35.5	35.5
5	38.6	38.6	38.6	26.8	26.7	26.8
6	29.0	29.0	29.0	20.7	20.7	20.7
7	21.8	21.6	21.8	16.1	16.1	16.1
8	17.0	16.8	17.0	12.9	12.9	12.9
9	13.4	13.2	13.4	10.4	10.4	10.4

Three Feet from Wall						
Dist from Ceiling	Three Foot Centers			Four Foot Centers		
	Fixture	Mid Point	Fixture	Fixture	Mid Point	Fixture
1	14.9	12.6	14.9	11.8	9.2	11.8
2	30.7	27.5	30.7	25.3	18.8	25.3
3	38.6	36.7	38.6	29.8	27.0	29.8
4	33.9	34.2	33.9	26.3	25.4	26.3
5	28.4	29.0	28.4	21.8	21.8	21.8
6	33.5	33.9	33.5	18.1	18.1	18.1
7	19.5	19.5	19.5	15.0	15.0	15.0
8	16.2	16.2	16.2	12.6	12.6	12.6
9	13.4	13.3	13.4	10.6	10.6	10.6

Progress Lighting  
701 Millennium Blvd.  
Greenville, South Carolina  
29607

[www.progresslighting.com](http://www.progresslighting.com)



Compact  
Fluorescent Trims

**6" Alzak® Open Wallwasher**  
**2-Lamp Horizontal Firebox®**  
**Non-IC**

Recessed

Type \_\_\_\_\_

-21FB

P8032 ☐

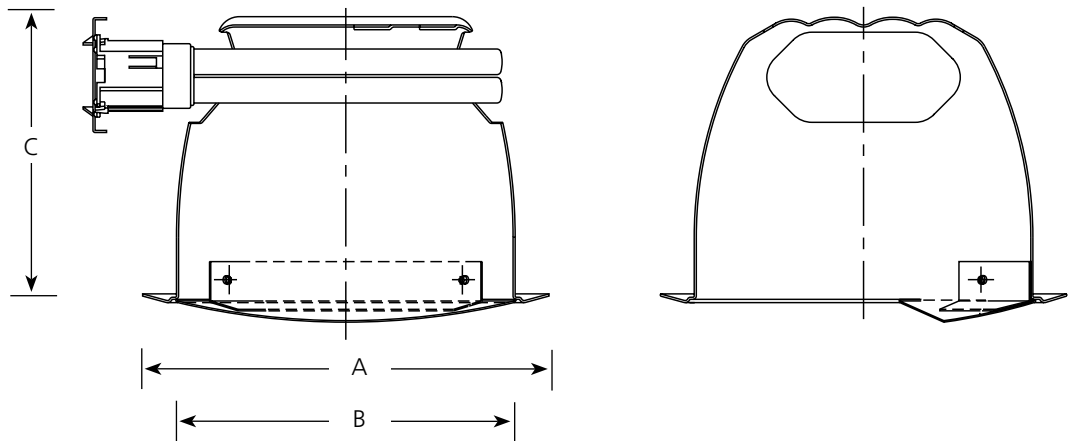
**Finish**

Catalog No.	Clear Alzak®
P8032	-21FB

**Dimensions (Inches)**

A	B	C
7-3/4	6-3/8	5-7/16

Maximum Ceiling Thickness: 1-1/8"



**Lamp Wattage**

Housing	IC	Non-IC
P63-EBFB	N/A	2 13w Quad
P68-EBFB	N/A	2 18w Quad
P66-EBFB	N/A	2 26w Quad

**Specifications:**

Flange

- Bright white powdered painted metal flange

Trim

- All aluminum construction
- One piece conoid upper reflector with integral finish
- Aluminum "scoop" kicker reflector
- No light leaks around trim flange
- Socket box mounts to trim for optimum performance, and consistent lamp position
- Trim retention accompanied by 3 spring clips located in aperture of housing

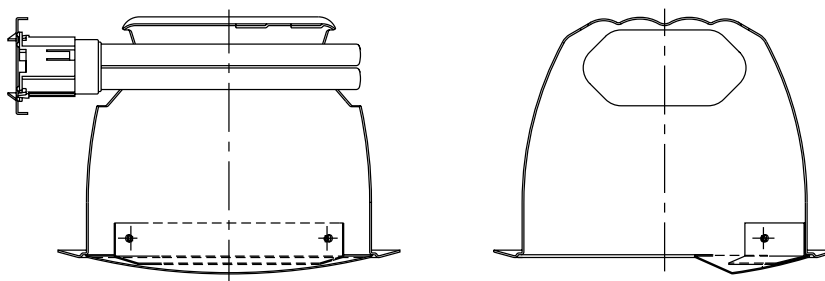
- Powder painted finish

Labeling

- UL-CUL damp location listed

Progress Lighting  
701 Millennium Blvd.  
Greenville, South Carolina  
29607

www.progresslighting.com  
Patent# 6,254,257



### INITIAL FOOTCANDLE READINGS

#### Two Feet from Wall

Dist. from Ceiling	Two Foot Centers		Three Foot Centers		
	Fixture	Fixture	Fixture	Fixture	Fixture
1	12.8	12.8	10.7	7.0	10.7
2	33.7	33.7	24.0	21.7	24.0
3	23.2	23.2	16.7	15.9	16.7
4	14.7	14.7	11.0	11.0	11.0
5	10.1	10.1	7.9	7.8	7.9
6	7.4	7.4	5.8	5.8	5.8
7	5.6	5.6	4.6	4.6	4.6
8	4.5	4.5	3.8	3.9	3.8
9	3.8	3.9	3.4	3.5	3.4

#### Three Feet from Wall

Dist. from Ceiling	Three Foot Centers			Four Foot Centers		
	Fixture	Fixture	Fixture	Fixture	Fixture	Fixture
1	3.3	2.9	3.3	3.1	2.3	3.1
2	12.9	11.4	12.9	11.4	8.0	11.4
3	15.9	16.0	15.9	12.8	12.1	12.8
4	12.9	13.0	12.9	10.9	9.9	10.9
5	9.4	9.6	9.4	7.9	7.9	7.9
6	7.3	7.3	7.3	6.2	6.2	6.2
7	5.8	5.9	5.8	5.1	5.0	5.1
8	4.7	4.9	4.7	4.2	4.2	4.2
9	4.1	4.3	4.1	3.7	3.7	3.7



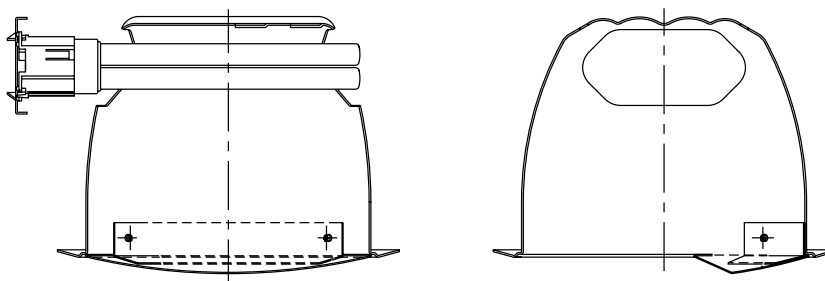
**P68-EBFB / P8032-21FB**

**6" Alzak® Open Wall Washer**

Report No. 99062

No. Lamps: 2     Type: 18w Quad CF     Lumens: 2500

Reflectances: 80% Ceil., 50% Wall, 20% Floor



### INITIAL FOOTCANDLE READINGS

#### Two Feet from Wall

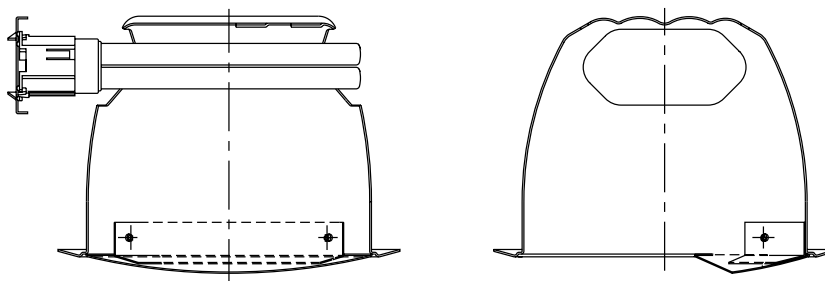
Dist. from Ceiling	Two Foot Centers		Three Foot Centers		
	Fixture	Fixture	Fixture	Fixture	Fixture
1	17.3	17.3	15.1	9.9	15.1
2	39.7	39.7	29.3	25.1	29.3
3	29.8	29.8	21.5	20.2	21.5
4	19.6	19.6	14.5	14.5	14.5
5	13.6	13.6	10.3	10.4	10.3
6	9.9	9.9	7.8	7.9	7.8
7	7.5	7.5	6.1	6.2	6.1
8	6.0	6.0	5.1	5.2	5.1
9	5.1	5.1	4.5	4.6	4.5

#### Three Feet from Wall

Dist. from Ceiling	Three Foot Centers			Four Foot Centers		
	Fixture	Fixture	Fixture	Fixture	Fixture	Fixture
1	4.4	3.8	4.4	4.1	3.0	4.1
2	16.5	15.3	16.5	14.5	10.8	14.8
3	19.2	18.8	19.2	15.9	14.1	15.9
4	16.1	16.4	16.1	13.7	12.5	13.7
5	12.3	12.6	12.3	10.4	10.2	10.4
6	9.6	9.8	9.6	8.2	8.2	8.2
7	7.7	7.9	7.7	6.7	6.7	6.7
8	6.3	6.6	6.3	5.6	5.6	5.6
9	5.5	5.7	5.5	4.9	4.9	4.9

Progress Lighting  
701 Millennium Blvd.  
Greenville, South Carolina  
29607

www.progresslighting.com  
Patent# 6,254,257



### INITIAL FOOTCANDLE READINGS

#### Two Feet from Wall

Dist. from Ceiling	Two Foot Centers		Three Foot Centers		
	Fixture	Fixture	Fixture		Fixture
1	20.5	20.5	17.7	11.5	17.7
2	52.0	52.0	36.8	33.8	36.8
3	40.0	40.0	28.4	27.2	28.4
4	26.8	26.8	19.6	20.2	19.6
5	19.0	19.0	14.3	14.6	14.3
6	16.0	14.0	10.9	11.0	10.9
7	10.6	10.6	8.6	8.8	8.6
8	8.4	8.4	7.1	7.3	7.1
9	7.3	7.3	6.3	6.5	6.3

#### Three Feet from Wall

Dist. from Ceiling	Three Foot Centers			Four Foot Centers		
	Fixture		Fixture	Fixture		Fixture
1	5.2	4.5	5.2	5.0	3.5	5.0
2	20.3	17.7	20.3	17.7	13.0	17.7
3	24.4	24.6	24.4	19.7	18.9	19.7
4	20.9	21.4	20.9	17.5	16.5	17.5
5	16.4	17.0	16.4	13.7	13.9	13.7
6	13.2	13.4	13.2	11.1	11.3	11.1
7	10.7	10.9	10.7	9.2	9.2	9.2
8	8.8	9.2	8.8	7.8	7.8	7.8
9	7.7	8.0	7.7	6.9	7.0	6.9