

SPEAKMAN COMPANY

S-2720 Installation, Maintenance & Operation Instructions

DESCRIPTION

Self-closing valve with 18" chain/pull ring.

SPECIFICATIONS

VALVE: 1" NPT Female Brass, Chrome-Plated. Self-Closing.
INLET: 1" NPT Female (Supplied w/1" X ½" Hex Bushing).
OUTLET: 1" NPT Female(Supplied w/1" X ½" Hex Bushing).
SHIPPING WEIGHT: 3 lbs.

INSTALLATION

Assemble valve to a horizontal or vertical water supply that has an uninterrupted source of potable water. Use pipe sealant on all joints.

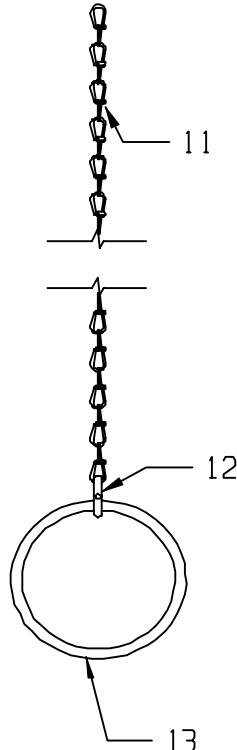
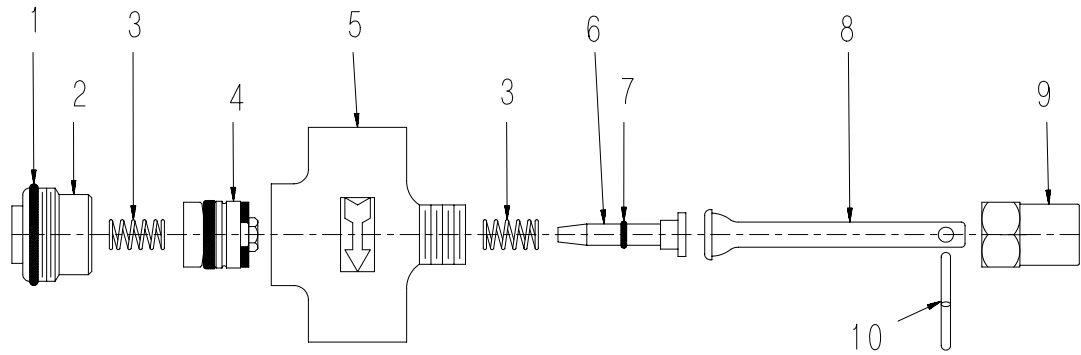
OPERATION

This valve is activated by pulling downward on the stainless steel ring. Once the valve is activated, continuous pressure on the ring is required for a constant flow of water. Valve will automatically shut off when ring is released.

MAINTENANCE

Should you need parts to repair this unit, please reference the parts list below for correct part numbers. Before any maintenance is done ***be sure to shut the water supply off.***

WARNING: Use only genuine Speakman parts when repairing or replacing components. To order parts call 1-800-537-2107.



S-2720 REPLACEMENT/REPAIR PARTS

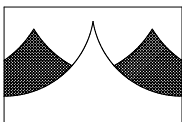
ITEM	PART/GROUP #	DESCRIPTION:
1	49-0131	#126 O-Ring
2	01-0522-RCP	Cap Nut
3	37-0038-MO	(2) Piston Spring
4	G05-0205-MO	Piston Assy.
5	20-0457-RNP-P	Self-Closing Valve Body
6	G05-0363	Plunger Assy.
7	49-0075	#10 O-Ring
8	04-0425-RCP-P	Safety Handle for Self-Closing Valve
9	01-0677-RCP	Nut for Self-Closing Valve
10	35-0029	S-Hook
11	05-0098-SS	18" #3 S/S Chain
12	35-0029	S-Hook
13	22-0040-SS	3" Dia S/S Ring

FLOW DATA

VALVE (WITHOUT BUSHINGS):

FLOW PRESSURE PSI (BAR)	5 (.34)	10 (.69)	15 (1.03)	25 (1.72)	35 (2.41)
FLOW RATE GPM (LPM)	22 (84)	31 (118)	38 (144)	49 (186)	58 (220)

NOTE: This unit should be connected to an uninterrupted source of potable water, with a minimum flowing pressure of 20 PSI and a maximum static pressure of 125 PSI.



SPEAKMAN COMPANY
 The Quality leader Since 1869
 P.O. Box 191, Wilmington, DE 19899-0191 USA
 1-800-537-2107, Fax: 1-800-977-2747

Note: Product improvements may cause specification and dimensional changes without notice.