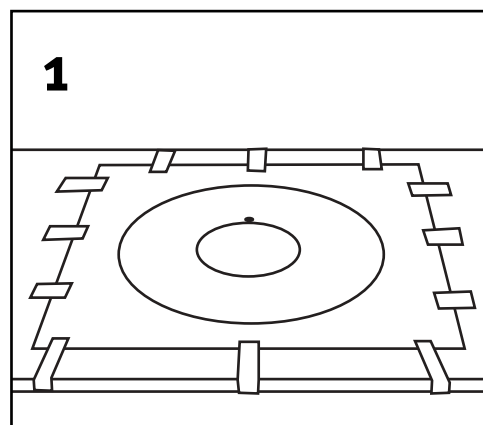




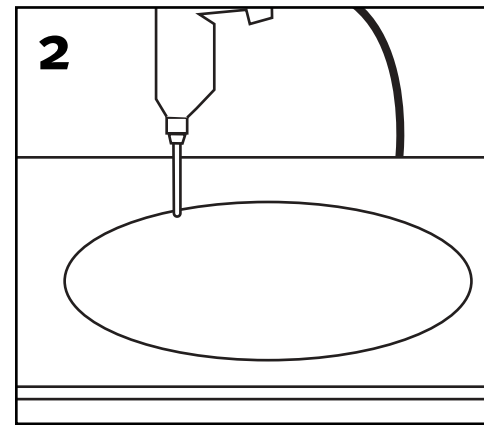
Vessel Mount and Drop-In Template Installation, Care & Cleaning Model TRI-1815-IS Islandia and Model TRI-1815-HL Halo

Tools required:

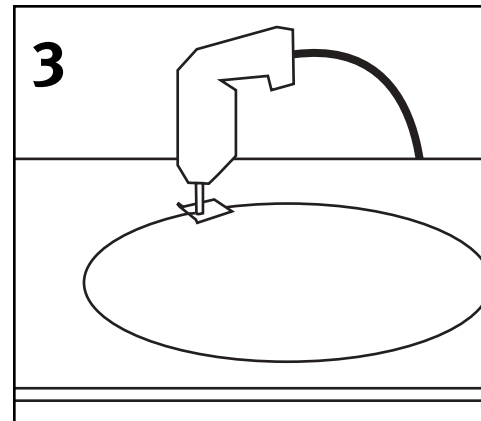
- Ruler/Tape Measure
- Drill
- Masking Tape
- Safety Glasses
- Screwdriver
- Saber Saw
- 1 -1/4" Hole Saw
- Caulk/Silicone Adhesive



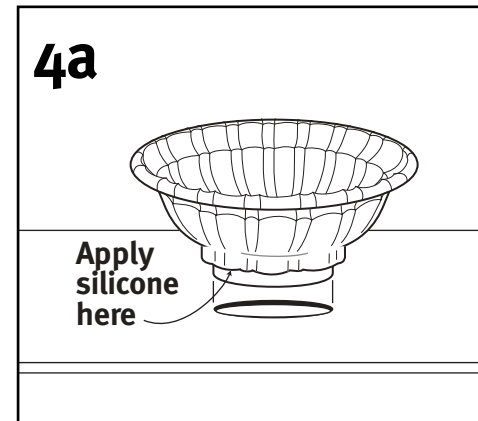
1
1. Select the bowl template that applies to the installation that you desire. Cut out the inside of the template. Locate the template front to rear and right to left on the countertop. Make sure that the bowl location will not interfere with the cabinet below or the plumbing. Attach the template to the countertop with masking tape and draw a pencil line around the inside of the template.



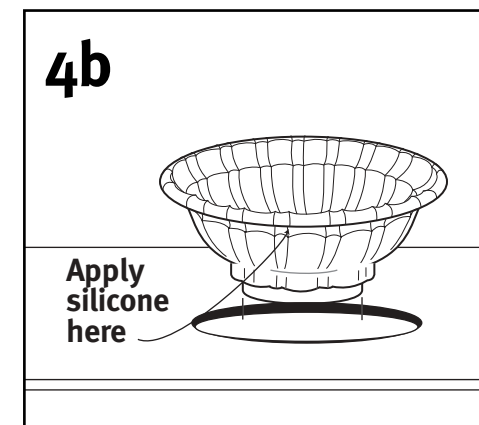
2
2. Drill a starter hole inside of the cutout line.



3
3. Using a saber saw, cut inside of the cutout line. Trial fit to check for proper fit.



4a. Vessel Bowl Mount
Apply a silicone sealer around the base flange and set bowl into place. Install faucet, supply lines and drain per manufacturer's instructions.



4b. Drop-In Mount
Apply a bead of silicone sealer to the underside of the sink flange and position into countertop opening. Install faucet, supply lines and drain per manufacturer's instructions.

Vessel Bowl Mount

Drop-in

RECOMMENDED CLEANING PROCEDURE FOR SWANSTONE SOLID SURFACE

Hard To Remove Stains

1. Abrasive cleaners such as Ajax, Comet, Bon Ami or Bar Keeper's Friend.
2. The use of an abrasive pad such as "Scotch-Brite."
3. For the most stubborn stains, fill the Swanstone vanity bowl about one-quarter full with a 50/50 solution of bleach and water. After ten or fifteen minutes of soaking, drain solution from the bowl as you wash and rinse both sides and bottom.

NOTE: DO NOT USE STEEL WOOL OR METAL SCOURING PADS

Mineral Based Stains

Cleaners designed to remove iron or rust should not harm Swanstone.

Marks Or Discoloration

WHITE automotive rubbing compound may be used to remove stubborn marks or discoloration.

Scratches

Use sandpaper, starting with coarsest grit and going to finest grit until scratch disappears - blend area in with abrasive finishing pad.

NOTE: FOR SWANSTONE GRANITES, Use #9 Fine Finishing Film for Final blending. Use Paste Wax to Restore Color.

Use of these products will not damage the Swanstone solid surface. Always follow label directions. If these methods fail to produce acceptable results, contact the Swan representative in your area.

RECOMMENDED UNDERMOUNT INSTALLATION OF A SWANSTONE SOLID SURFACE HALO & ISLANDIA BOWL Installation, Care & Cleaning Model TRI-1815-IS Islandia and Model TRI-1815-HL Halo

Prior to installation, inspect all product for damage. Do not install damaged material.

A Swanstone bowl can be mounted to a countertop surface other than Swanstone with 100% silicone adhesive only. Mounting the Swanstone solid surface bowl to any solid surface other than Swanstone with a hard seam will void the SWANSTONE warranty.

Supplied by Swan

- Vanity bowl
- Sink clips and screws

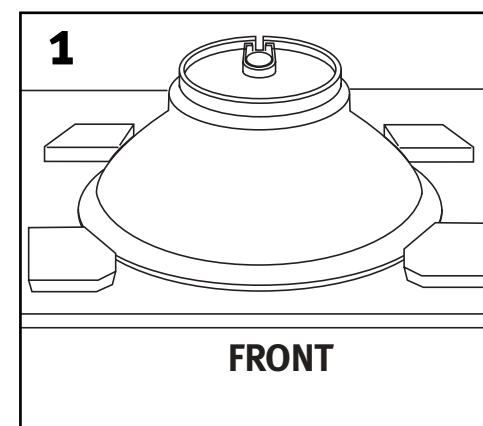
Material Required

- 100% silicone
- Mineral spirits
- Contact cement
- Denatured alcohol
- 3/4" plywood cut to 3" wide strips

Working from the top of the countertop

1. Select the template that will provide the desired overhang.
2. Position the template onto countertop at the desired location. Bowl position will be determined by cabinet size, cabinet supporting members and deck mounted fittings.
3. Cut bowl hole into countertop per manufacturer's recommendations. Finish sink hole as desired with tools compatible with the manufacturer of the countertop.

Working from the bottom of the countertop

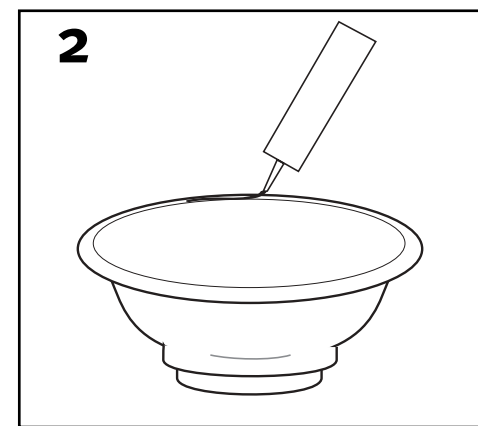


1. Set the bowl into position being careful that the overhang is uniform and aligned to the cutout.

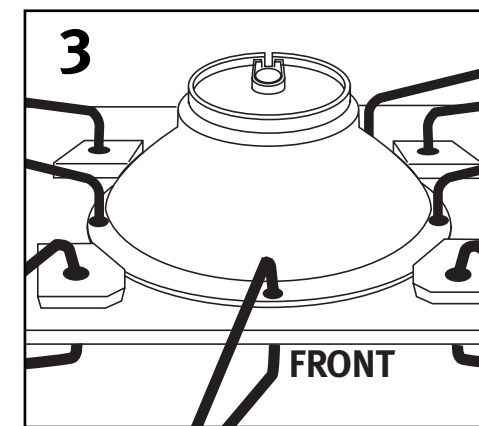
Cut 3" wide strips of 3/4" thick plywood and trial fit around the perimeter of the Swanstone bowl (except where faucet holes will be located). It is suggested that a 1/4" space exist between the plywood strips and the bowl flange.

Join the plywood strips to the countertop surface with contact cement.

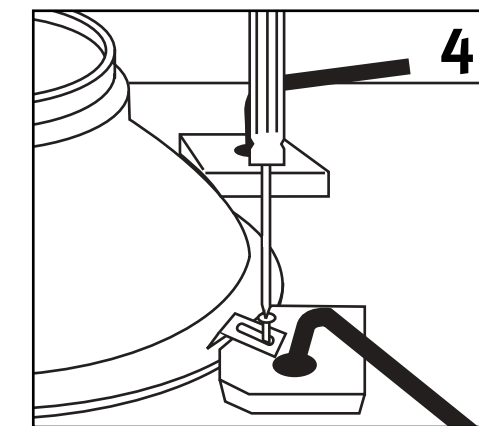
Remove the Swanstone bowl and clean both the countertop and sink flange with denatured alcohol.



2. Apply a continuous bead of 100 percent silicone around the bowl flange and set it into place.



3. Using the sink clamps and screws provided by Swan (1P3115-10), secure the Swanstone bowl into place.

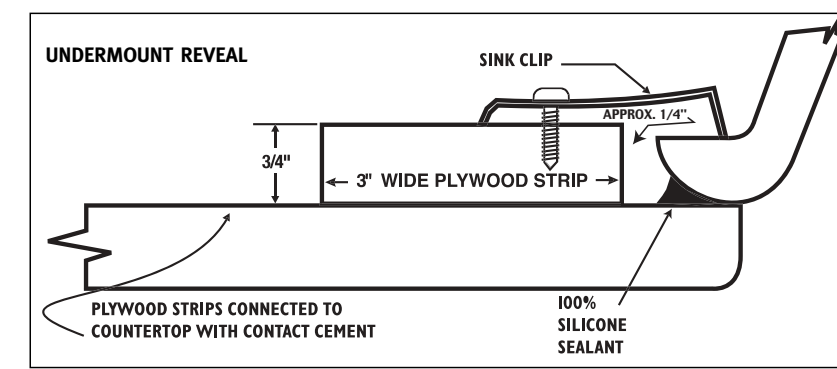
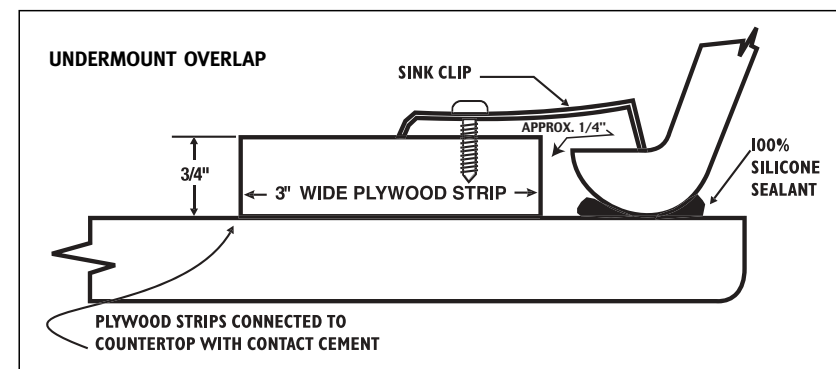


4. A sink clip should be positioned as illustrated.

Lightly tighten screws so sink position can be verified.

Tighten screws securely. If desired, additional temporary clamps (not provided) can be used to pull the sink flange tightly to counter.

Use mineral spirits and a soft cloth to remove excess silicone that has been squeezed out by the mounting procedure. Be sure that there is a consistent seal along the interior perimeter of the bowl.



RECOMMENDED CLEANING PROCEDURE FOR SWANSTONE SOLID SURFACE

Hard To Remove Stains

1. Abrasive cleaners such as Ajax, Comet, Bon Ami or Bar Keeper's Friend.
2. The use of an abrasive pad such as "Scotch-Brite."
3. For the most stubborn stains, fill the Swanstone vanity bowl about one-quarter full with a 50/50 solution of bleach and water. After ten or fifteen minutes of soaking, drain solution from the bowl as you wash and rinse both sides and bottom.

NOTE: DO NOT USE STEEL WOOL OR METAL SCOURING PADS

Mineral Based Stains
Cleaners designed to remove iron or rust should not harm Swanstone.

Marks Or Discoloration
WHITE automotive rubbing compound may be used to remove stubborn marks or discoloration.

Scratches
Use sandpaper, starting with coarsest grit and going to finest grit until scratch disappears - blend area in with abrasive finishing pad.

NOTE: FOR SWANSTONE GRANITES,
Use #9 Fine Finishing Film for Final blending. Use Paste Wax to Restore Color.

Use of these products will not damage the Swanstone solid surface. Always follow label directions. If these methods fail to produce acceptable results, contact the Swan representative in your area.

Undermount Overlap

Undermount Reveal