

# TOTO®

## CT708E/CT708EV Wall Hung Flushometer Toilet, 1.28GPF when used with High Efficiency Flushometer Valve



CT708E - Wall Hung Flushometer Toilet  
SC534 - Commercial Toilet Seat  
TET1LN32#CP - 1.28GPF ECO EFV - Automatic Flushometer Valve



CT708EV - Wall Hung Flushometer Toilet  
SC534 - Commercial Toilet Seat  
TET2LN32#SS - 1.28GPF ECO EFV - Automatic Flushometer Valve  
(flush valve will launch in second half of 2008)

- Powerful siphon jet flush
- Elongated rim
- Low consumption (4.8Lpf/ 1.28 Gpf or less/ when used with High Efficiency Flushometer Valve)
- Available with performance matched TOTO® Flushometer Valve.

Vitreous china wall hung flushometer toilet with elongated rim. Low consumption (4.8Lpf/ 1.28 Gpf) siphon jet flush.

■ **CT708E**  
1-1/2" top spud inlet, less seat.

■ **CT708EV**  
1-1/2" back spud inlet, less seat.

□ **SC534**  
Elongated, open front seat less cover.

□ **SC134**  
Elongated, open front seat with cover.

TOTO® wall hung toilets require a supporting carrier (supplied by others). Follow carrier manufacturer's installation instructions.

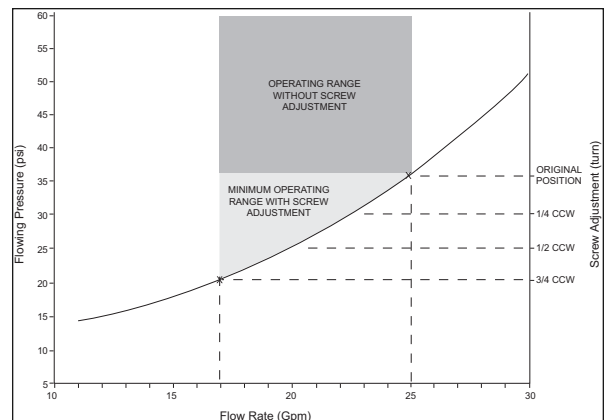
#### Colors:

Standard #01 Cotton

Optional See price book for additional colors

#### Recommended flushometer valve:

TOTO® Manual and Electronic Flush Valves are highly recommended for maximum performance.



Reliance Commercial Line

# CT708E/CT708EV

## Wall Hung Flushometer Toilet,

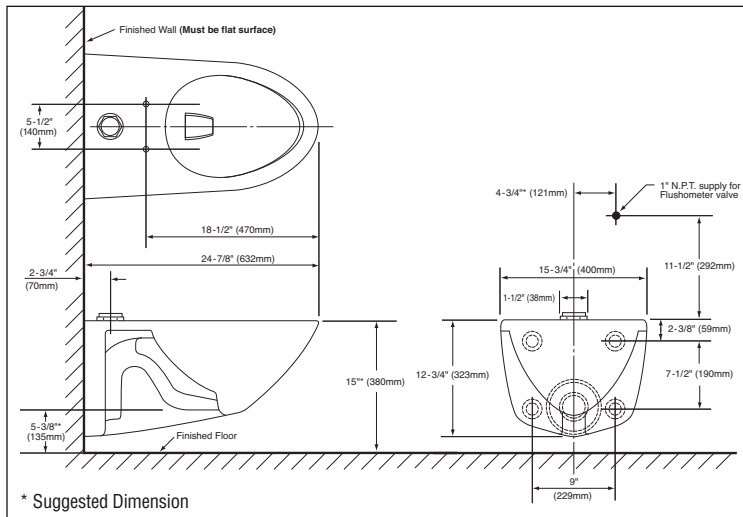
### 1.28GPF when used with High Efficiency Flushometer Valve

#### ■ PERFORMANCE

The TOTO® low consumption flushometer toilet received high ratings during ANSI/ASME testing at independent laboratories. Designed with a powerful siphon jet flush, the bowl offers a large water surface and a 100% glazed trapway.

#### ■ SPECIFICATIONS

Water Use: 1.28 Gpf/4.8Lpf  
 Flush System: Siphon jet  
 Min. Water Pressure: 35 psi static  
 Water surface: 12-5/8" x 10-1/4"  
 Trap dia: 2-1/8"  
 Trap seal: 2-5/8"  
 Warranty: One Year Limited Warranty  
 Material: Vitreous china



CT708E Top Spud

Shipping Weight:

**CT708E–Bowl**  
49 lbs.  
**CT708EV–Bowl**  
53.5 lbs.

Shipping Dimensions:

**CT708E–Bowl**  
15-1/2"L x 15-1/2"W  
x 26-3/8"H  
**CT708EV–Bowl**  
17-1/8"L x 16"W x 26"H

Recommended carrier: Any Jay R. Smith siphon jet support (Four-bolt).

Fixture dimensions and hydraulic performance meet or exceed ANSI/ASME standard A112.19.2 and CAN/CSA B 45 requirements.

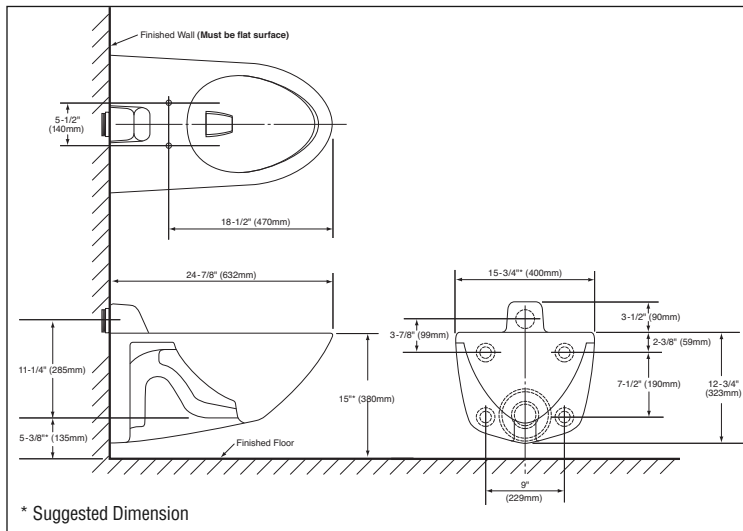
Meets and exceeds ASME A112.19.2 standards for drainline carry distance with a 2% grade and 4" I.D. pipe.

Listing / Approvals: IAPMO/c-UPC, CSA, City of Los Angeles, State of Massachusetts, and others.

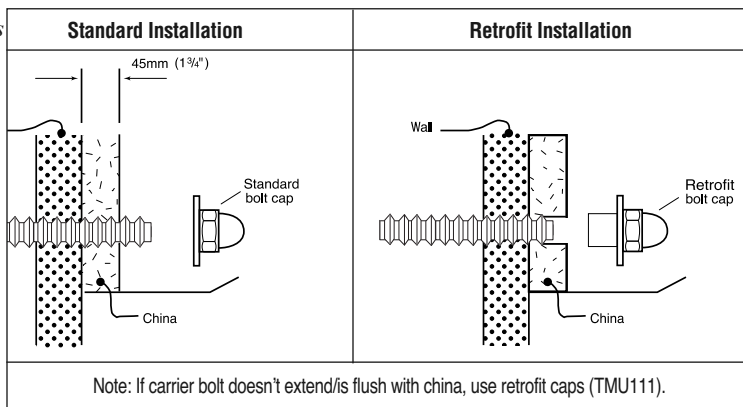


Meets the American Disabilities Act Guidelines and ANSI A117.1 requirements where installed so top of rim is 17" from the finished floor.

These dimensions and specifications are subject to change without notice.



CT708EV Back Spud



**Warning: Installation on uneven surface can cause fracture.**  
**INSTALLATION SURFACE MUST BE COMPLETELY FLAT.**

**TOTO®**

TOTO® U.S.A., INC. • 1155 Southern Road, Morrow, GA 30260  
 Tel. (888) 295-8134 • Fax. (770) 282-8701 • www.totousa.com  
 Printed in U.S.A. © TOTO® LTD. 09/07 #E50170

Printed on recycled paper