



LT193(G) - Round Undercounter Lavatory

- 15-3/8" Diameter undercounter lavatory
- Template including mounting hardware
- Spacious basin with overflow drain
- ADA compliant with overflow to rear side
- One year limited warranty
- SanaGloss® technology: Super smooth, ion barrier glazing helps keep your lavatory clean

Vitreous china undercounter lavatory. Complete with mounting hardware and template.

■ **LT193G**

With Sanagloss ceramic glaze  
(Available in: #01, #11, #03, #12)

■ **LT193**

(Available in: #51)

 ADA Compliant

*Finishes:*

*Standard* #01 Cotton, #11 Colonial White  
#12 Sedona Beige, #03 Bone  
#51 Ebony (No SanaGloss on #51)

*Optional* See price book for  
additional colors

Please note: Soirée® faucets  
TL960DD and TL960SD are not  
recommended for use with this  
lavatory.

# LT193(G) Round Undercounter Lavatory

## DESIGN

LT193(G) round undercounter lavatory is made from durable vitreous china offers years of quality use.

## SPECIFICATIONS

Waste: 1-1/4" O.D.  
 Size: 17-5/16" Dia.  
 Basin: 15-3/8" Dia.  
 Warranty: One Year Limited Warranty  
 Material: Vitreous china

Shipping Weight: **LT193(G)**  
 18.2 lbs.

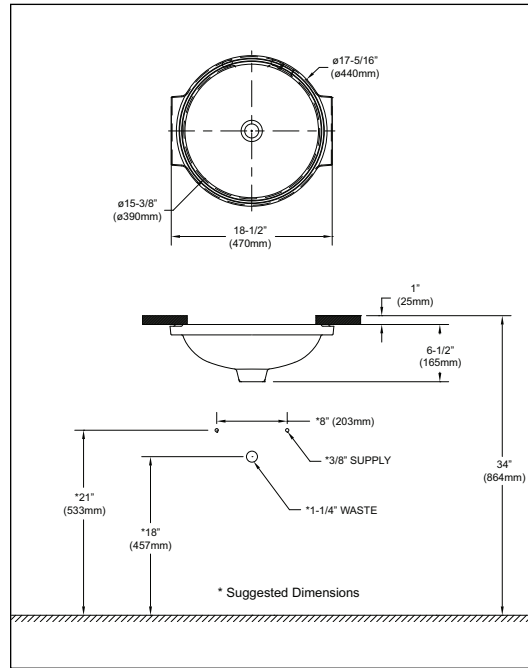
Shipping Dimensions: **LT193(G)**  
 19-1/8" L x 17-3/4" W  
 x 7-3/8" H

Product complies with the requirements of ASME  
 A112.19.2/CSA B45.1 U.S. & Canadian Certification  
 Obtained: IAPMO/cUPC, and others

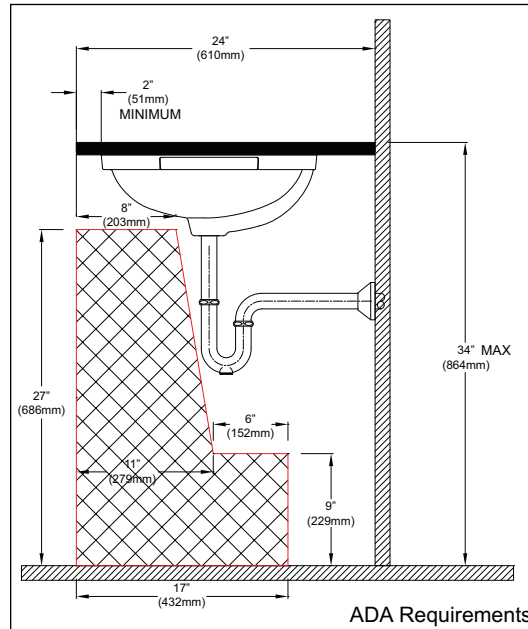


Meets the American Disabilities Act Guidelines and ANSI A117.1 requirements when countertop installed 864mm (34") from finished floor and lavatory installed 51mm (2") minimum from the front edge with overflow to the rear side.

These dimensions and specifications are subject to change without notice.



LT193(G) - Round Undercounter Lavatory



**TOTO®**

TOTO® U.S.A., INC. • 1155 Southern Road, Morrow, GA 30260  
 Tel. (888) 295-8134 • Fax. (770) 282-8701 • www.totousa.com

Printed in U.S.A. © TOTO® LTD. 03/09 #C30286

Printed on recycled paper

REV 04/09