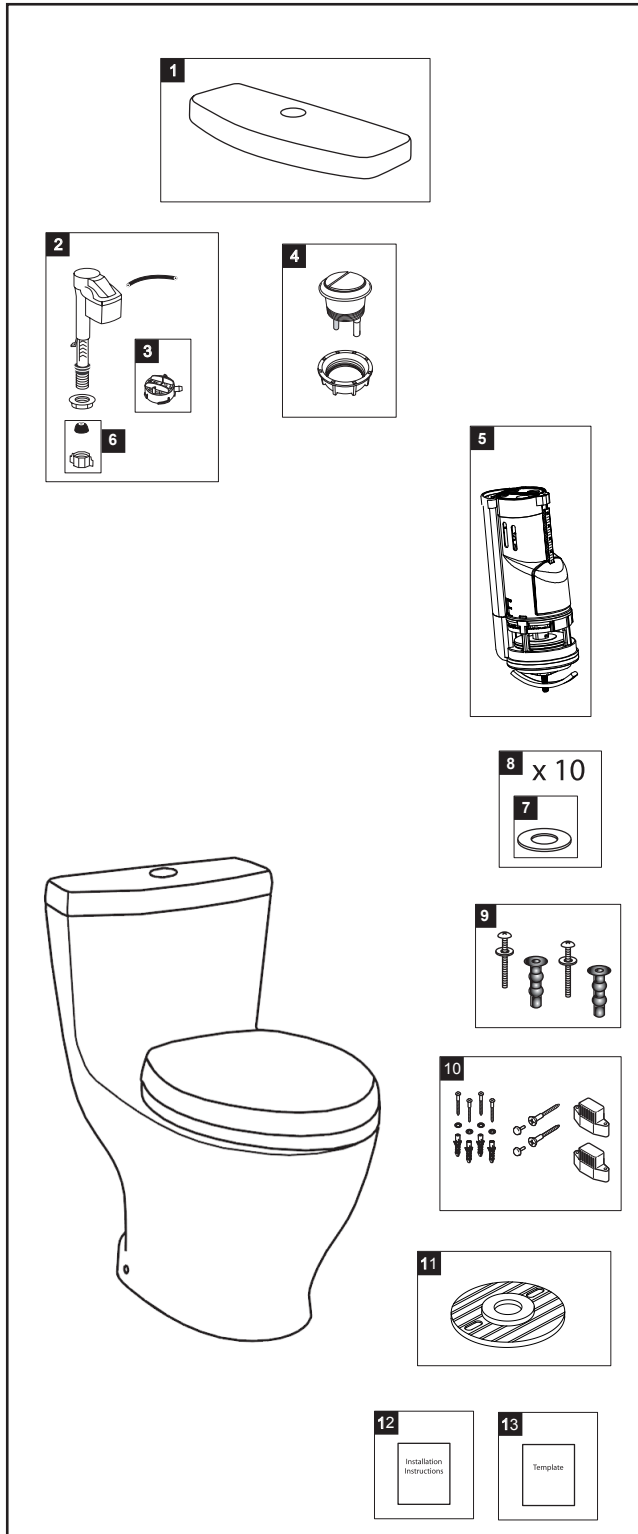


MS654204MF / MS654114MF

MS654204MF / MS654114MF
CST654MF

Aquia® 1.6 & 0.9 Gpf Toilet, Elongated, Dual-Max®, 12" Rough-In Universal Height



Actual product may differ slightly from illustration.

Item	Part	Description
1	TCU654CR#01 TCU654CR#03 TCU654CR#11 TCU654CR#12 TCU654CR#51	Tank Lid - Cotton Tank Lid - Bone Tank Lid - Colonial White Tank Lid - Sedona Beige Tank Lid - Ebony
2	TSU09A.13	Fill Valve - Dual-Max® - Lavelle
3	THU302	Diaphragm Cap - Lavelle
4	THU340#CP	Push Button - Chrome Plated
5	THU338	Flush Valve
6	THU213	Parts Bag Assembly
7	9BU088E	Flush Valve Gasket (1pc)
8	THU348	Flush Valve Gaskets (10 Pieces)
9	THU651N	Top Mounting Seat Hardware
10	THU223#CP	Toilet Mounting Hardware - Chrome Plated
11	THU291	Socket Rough-in
12	0GU069	Installation Instruction & Owner's Manual
13	0GU170	Template - Installation

Product Number Explanations

One-Piece Toilet

(MS) Toilet & Seat Combination
(654) Toilet Model
(204 / 114) Seat Model
(M) Dual-Max®
(F) Universal Height

Colors

(#01) Cotton
(#03) Bone
(#11) Colonial White
(#12) Sedona Beige
(#51) Ebony