

# THIS SPACE FOR DESIGNER/ ENGINEER APPROVAL

Job/Customer \_\_\_\_\_ Date \_\_\_\_\_ Contractor \_\_\_\_\_

Model Specified \_\_\_\_\_ Qty \_\_\_\_\_ Approved By \_\_\_\_\_

Designer/Engineer \_\_\_\_\_ Date \_\_\_\_\_ Contractor's PO# \_\_\_\_\_

Submitted by \_\_\_\_\_ Date \_\_\_\_\_ Other \_\_\_\_\_

## 5864-5867 Series

### FULL PORT FORGED BRASS BALL VALVES

### PRIMARY/SECONDARY LOOP PURGE TEE

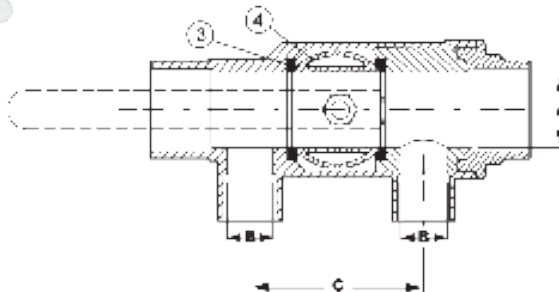
### REVERSIBLE HANDLE

**CxC**  
**600 WOG - ISO 9001:2000**

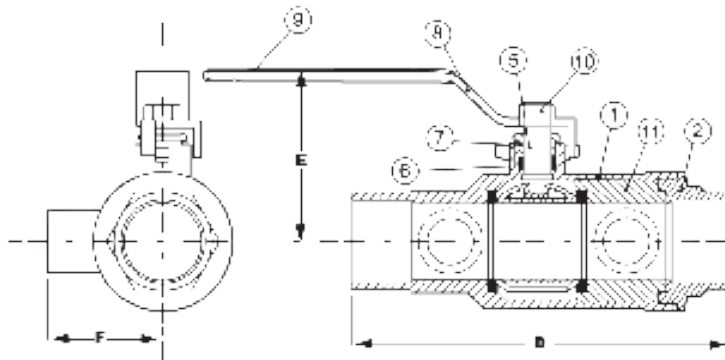


ITEM #	SIZE	P/CARTON	P/CASE	A	B	C	D	E	F
<b>CxC 1" PRIMARY LOOP</b>									
58642	1" x 1/2"	1	12	1	1/2	2 5/16	5 1/4	2 3/8	1 7/16
58643	1" x 3/4"	1	12	1	3/4	2 11/16	5 13/16	2 3/8	1 11/16
58644	1" x 1"	1	12	1	1	2 7/8	6 1/4	2 7/16	1 7/8
<b>CxC 1 1/4" PRIMARY LOOP</b>									
58652	1 1/4" x 1/2"	1	12	1 1/4	1/2	2 5/8	5 3/4	2 9/16	1 11/16
58653	1 1/4" x 3/4"	1	12	1 1/4	3/4	3 1/4	6 5/16	2 1/4	2 1/8
58654	1 1/4" x 1"	1	12	1 1/4	1	3 1/4	7	2 9/16	2 3/16
58655	1 1/4" x 1 1/4"	1	12	1 1/4	1 1/4	3 1/4	7 3/16	2 5/8	2 1/8
<b>CxC 1 1/2" PRIMARY LOOP</b>									
58662	1 1/2" x 1/2"	1	12	1 1/2	1/2	2 15/16	6 5/8	2 15/16	1 11/16
58663	1 1/2" x 3/4"	1	12	1 1/2	3/4	3 1/8	7 7/8	2 15/16	2 1/8
58664	1 1/2" x 1"	1	12	1 1/2	1	3 3/8	7 7/8	2 15/16	2 1/4
58665	1 1/2" x 1 1/4"	1	12	1 1/2	1 1/4	3 11/16	7 3/4	2 7/8	2 5/16

**PATENTS PENDING**



NO.	DESCRIPTION	MATERIAL
1	BODY	BRASS
2	END CAP	BRASS
3	SEAT	PTFE
4	BALL	BRASS HCP
5	STEM	BRASS
6	STEM SEAL	PTFE
7	PACKING GLAND	BRASS
8	HANDLE	STEEL CP
9	HANDLE JACKET	VINYL
10	HANDLE NUT	STEEL ZP
11	SEAT RETAINER	BRASS



TEMP °F	WOG
100	600
150	485
200	395
250	210
300	N/A
350	N/A
366	N/A

Specifications: Designed for residential, commercial or industrial use with water, oil or gas. This approved Webstone Valve is actuated by a blowout proof stem and features an adjustable packing nut. Solder joint temperature ratings are per ASME B16.18 Annex A for 95-5 solder. Other solder materials have lower pressure/temperature limits. Do not silver braze or over heat valves when soldering.

**Webstone** Company, Inc.  
 www.webstonevalves.com

Quality and Commitment Since 1954

Tel: (800) 225-9529 • Fax (800) 336-5133

Webstone product specifications in U.S. customary units are approximate and are provided for reference only. Webstone reserves the right to change or modify product design, construction, specifications or materials without prior notice and without incurring any obligation to make such changes and modifications on Webstone products previously or subsequently sold.

5864spec\_072809