



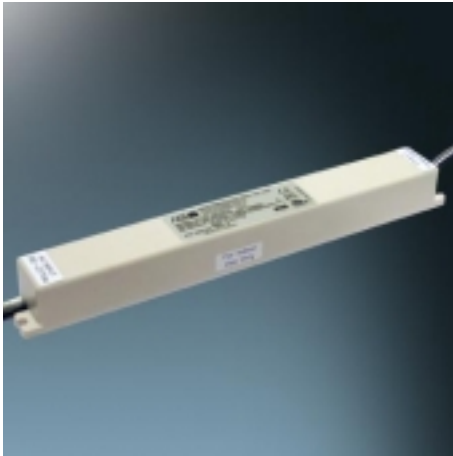
Job Name:

Contact:

Fixture Type:

Part Number:

LED 17W 277V DRIVER



**Description:**

The 17 watt driver is a Class II power supply rated for operating LEDs. It features an universal voltage input and a constant current output. The encapsulated electronics and inherent protection adds reliability to both the driver and LEDs connected. Use 18-20 gauge wire for remote installation up to a maximum of 150ft. National and local codes must be followed when mounting driver inside a junction box. Please contact manufacturer for further details.

**Part Numbers:**

**70429**

17W 277V, for 4-5(3watt LED)

**Technical Specs:**

100-277V AC, 50/60Hz input

700mA DC constant current output

10VA, 10W for 4(3watt LEDs)

13VA, 12W for 5(3watt LEDs)

Amber/Red leds are 2watt, requiring a minimum of 6, up to a maximum of 8.

Operating temperature: -22°F to 140°F

Class II rated

Suitable for dry location only

Short circuit protection

Overload protection

Over-voltage protection

Thermal protection

