



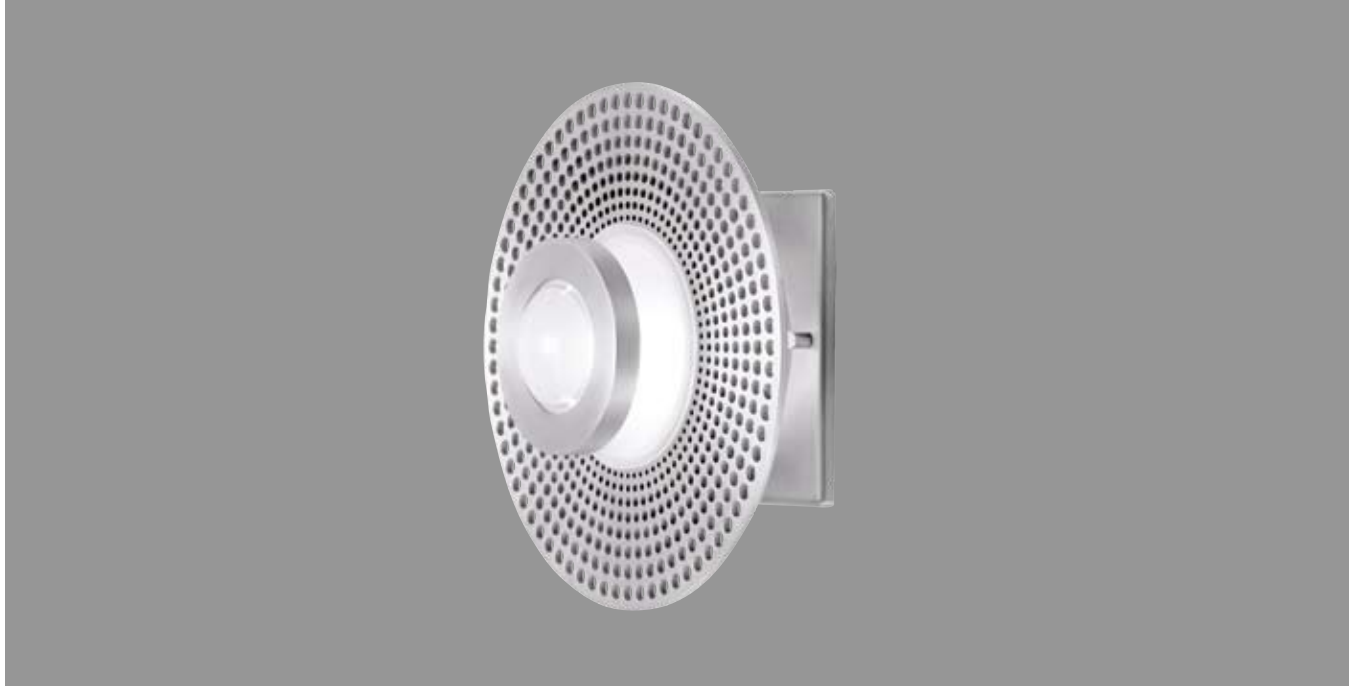
A Division of Troy-CSL Lighting, Inc.

# ARCHITECTURAL

Project \_\_\_\_\_

Fixture Type \_\_\_\_\_

# VERTIGO

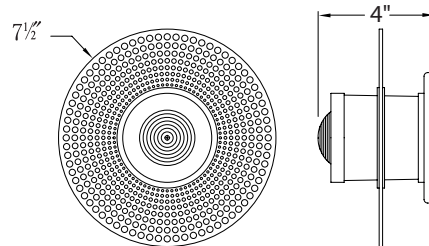


## VERTIGO

SS1002-SA	Satin Aluminum		
Lamp*	35W Xenon	G8 Bi-pin	120V
Dims	7 1/2" Ø x 4"P	ADA	
Glass Tube	3" Ø		
Vertigo Plate	7 1/2" Ø		
Backplate	4 1/2" x 4 1/2"		

\* lamp included

- Aluminum body
- Satin Aluminum finish
- Glass diffuser & cylinder
- 120V 35W Xenon lamp
- Wet-location listed
- Wall and Flush mount



CREATIVE SYSTEMS LIGHTING - A Division of Troy-CSL Lighting, Inc.

14625 E. Clark Avenue, City of Industry, CA 91745 Tel: 626-336-4511 Fax: 626-330-4266 www.csllighting.com