



Philips Ledino  
Ceiling light

*Ledino*



31602/87/48

## Essence of purity

giving light a new experience

Power with control. Illuminate every corner of your home with this dimmable family of high power ceiling and wall lights with a hint of modernist industrial-chic design.

### Advanced

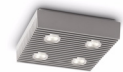
- Pure natural, dimmable light
- Innovative LED technology with extremely long operating life

### Ease of use

- Maintenance free, no lamp replacement needed
- Integrated driver, directly connectable to main power supply

### Sustainable light solutions

- Saves up to 80% energy



**PHILIPS**

sense and simplicity

# Specifications

## Design and finishing

- Material: aluminium
- Color: grey

## Product dimensions & weight

- Height: 2.1 inch
- Length: 8.3 inch
- Width: 8.3 inch
- Net weight: 3.527 lb

## Technical specifications

- Mains power: 120 V, 60 Hz
- Bulb technology: PowerLED, Safety Extra Low Voltage
- Number of bulbs: 4
- Wattage bulb included: 7.5 W
- Maximum wattage replacement bulb: 7.5 W

- Light color: 2700K warm white
- Beam angle: 40°

## Service

- Warranty: 3 year(s)

## Packaging dimensions & weight

- Height: 9.2 inch
- Length: 9.0 inch
- Depth: 2.8 inch
- Weight: 3.924 lb

## Miscellaneous

- Especially designed for: Living- & Bedroom
- Style: Modern
- Type: Ceiling light

# Highlights

## Pure natural, dimmable light

Pure natural, dimmable light

## Innovative LED technology

Innovative LED technology with extremely long operating life

## Maintenance free

Maintenance free, no lamp replacement needed

## Integrated driver

Integrated driver, directly connectable to main power supply

## Saves up to 80% energy

The LED lighting technology used in Philips luminaires is highly energy-efficient (7.5 W module produces 350 Lumen). As a result, every luminaire conserves energy, helping consumers to save money on their electricity bills and contribute to preserving the environment. For home lighting that's energy-efficient and provides great light in a range of contemporary designs, look for Philips LED products.



Issue date 2011-10-13

Version: 1.0.1

12 NC: 9150 024 65301  
UPC: 0 46677 79925 0

© 2011 Koninklijke Philips Electronics N.V.  
All Rights reserved.

Specifications are subject to change without notice.  
Trademarks are the property of Koninklijke Philips Electronics N.V. or their respective owners.

[www.philips.com](http://www.philips.com)