

Echo Grande (Compact Fluorescent)

700TDECGP_-CF

1.0



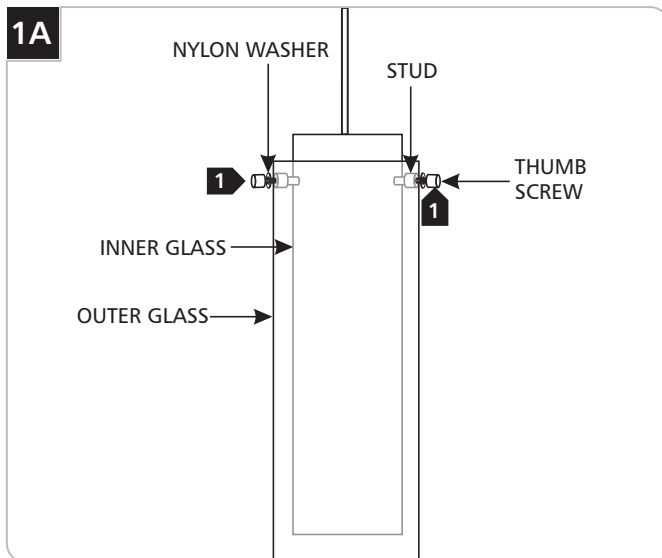
GENERAL PRODUCT INFORMATION:

This product is suitable for damp locations.

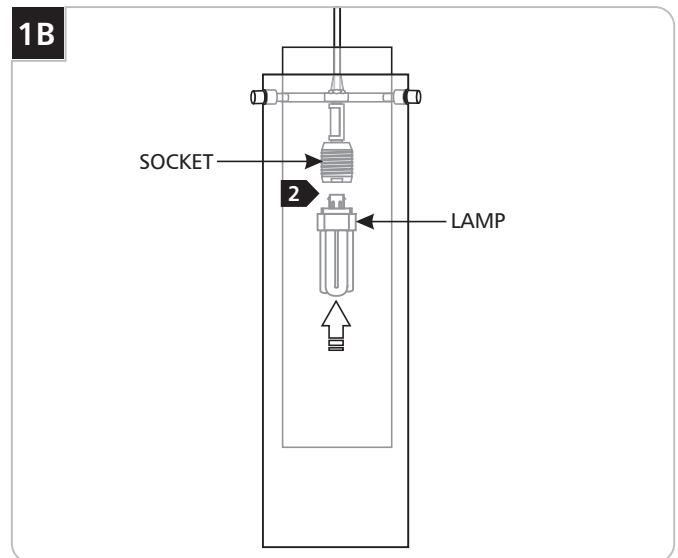


Installing the Outer Glass & Lamp

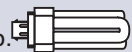
CAUTION: To reduce the risk of a burn or electric shock during relamping, disconnect the power to the fixture.



1 Line up the outer glass holes with the inner glass studs and secure the outer glass to inner glass with provided thumb screws and nylon washers.



Use **MAX 32 Watt** GX24Q-3 Base Triple Tube Compact Fluorescent Lamp.



2 Push the lamp pins firmly all the way into the socket holes.

SAVE THESE INSTRUCTIONS!



TECH LIGHTING®

7400 Linder Ave, Skokie, IL 60077

847.410.4400

www.techlighting.com

© 2008 Tech Lighting, L.L.C. All rights reserved. The "Tech Lighting" graphic is a registered trademark of Tech Lighting, L.L.C. Tech Lighting reserves the right to change specifications for product improvements without notification.

A Generation Brands Company