



KMD-530M_H

MODULAR CRESCENT CUBER



KMD-530M_H
04/11/17
Item0 # 13350

W x D x H
30" x 24^{1/4}" x 22^{1/8}"

KM Edge SERIES

KMD-530MAH ★

Air-Cooled

Shown on optional
Lancer 30" Dispenser

KMD-530MWH

Water-Cooled

KMD-530MRH

Remote Air-Cooled



Item #: _____

Project: _____

Qty: _____



AIA#: _____

Features

► Individual crescent cube

► Stainless steel evaporator

► CycleSaver™ design 

- Up to 560 lbs. of ice production per 24 hours
- Ice on beverage design
- Durable stainless steel exterior
- Protected by H-Guard Plus  Antimicrobial Agent
- EverCheck™ alert system 
- Removable air filters (Air-cooled model only)
- Front air inlet panels available for side-by-side application (used with HS-5065)
- R-404A Refrigerant

Available on Bins:

B-250PF BD-500PF/SF B-800PF/SF B-1150SS

B-500PF/SF B-700PF/SF B-900PF/SF B-1300SS

Top kit may be required. See Bin Spec Sheets.

Warranty:

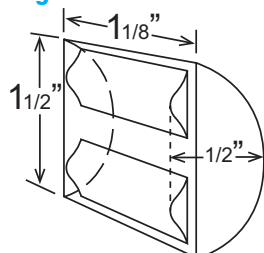
3 Year Parts & Labor on entire machine. 5 Year Parts & Labor on Evaporator.

5 Year Parts on Compressor; air-cooled condenser coil.

Valid in United States, Canada, Puerto Rico and U.S. Territories. Contact factory for warranty in other countries.

Condenser	Model	ICE PRODUCTION		WATER USAGE		ELECTRICAL						Heat Rejection BTU/hr.	Shipping Weight	ENERGY STAR®
		Air / Water Temp Lbs. per 24 hours	Per Cycle	Potable Gal. per 100 lbs.	Condenser Gal. per 100 lbs.	kWh Used per 100 lbs.	Max. Fuse Size or HACR Circuit Breaker	Amperage	Voltage					
		70°/ 50°F 90°/ 70°F	Lbs. Cubes	90°/ 70°F	90°/ 70°F	90°/ 70°F								
Air-Cooled	KMD-530MAH	553 462	9.3 432	17.1	N/A	5.7	20A	12A	115/60/1	6,800	170 lbs.			★
Water-Cooled	KMD-530MWH	540 520	10 432	20.9	102	4.4	20A	10.5A	115/60/1	7,080	170 lbs.			
Remote Air-Cooled	KMD-530MRH	560 488	9.6 432	16.5	N/A	5.8	20A	12A	115/60/1	7,800	170 lbs.			

KM Edge Cube Dimensions*



* approximate size in inches, image not to scale

Operating Limits

- Ambient Temp Range 45 - 100°F
- Water Temp Range 45 - 90°F
- Water Pressure 10 - 113 PSIG
- Voltage Range 104 - 127V

Service

- Panels easily removed and all components accessible for service.
- Allow 6" (15 cm) clearance at rear, left side, and top and 12" (30 cm) clearance at right side for air-cooled model.
- Allow 6" (15 cm) clearance at rear, sides, and top for water-cooled and remote models.

Plumbing

- Icemaker Water Supply Line: Minimum 1/4" Nominal ID Copper Water Tubing or Equivalent
- Icemaker Drain Line: Minimum 3/4" Nominal ID Hard Pipe or Equivalent
- Water-Cooled Model (Lines Must Be Independent of Icemaker)
- Condenser Water Supply Line: Minimum 1/4" Nominal ID Copper Water Tubing or Equivalent
- Condenser Drain/Return Line: Minimum 1/4" Nominal ID Hard Pipe (open drain system) or Copper Water Tubing (closed loop system) or Equivalent



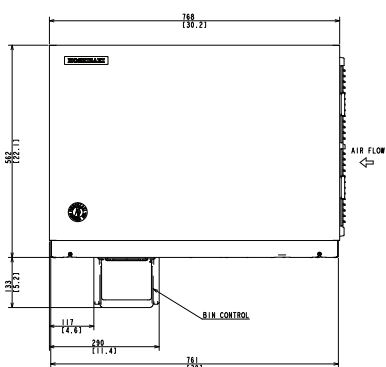
KMD-530M_H

MODULAR CRESCENT CUBER

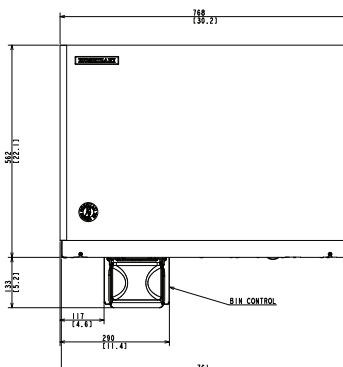


KMD-530M_H
04/11/17
Item # 13350

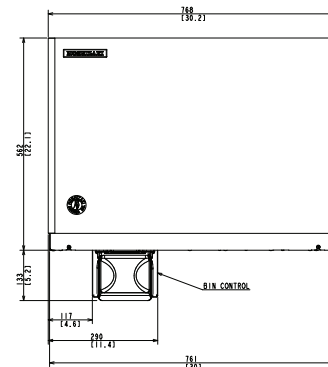
FRONT VIEW



AIR-COOLED

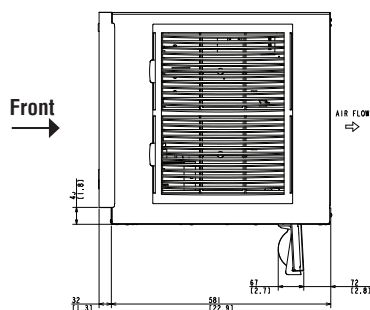


WATER-COOLED

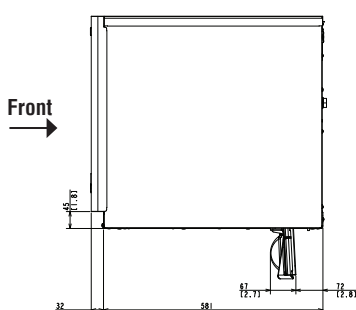


REMOTE AIR-COOLED

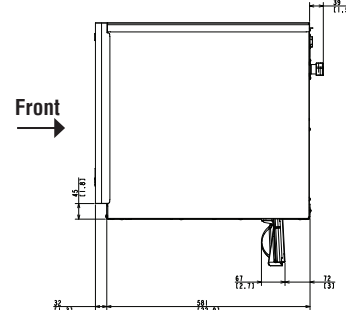
SIDE VIEW



AIR-COOLED

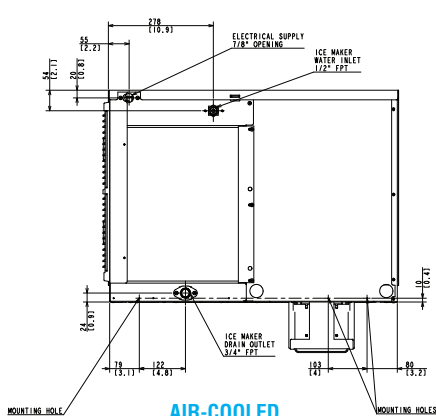


WATER-COOLED

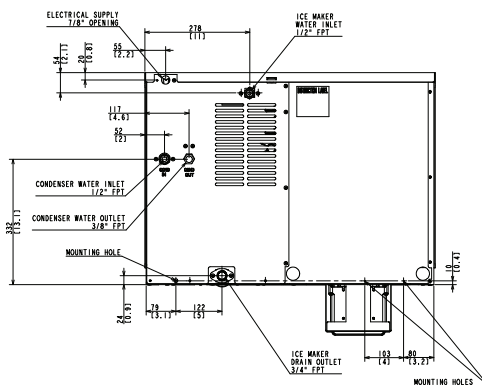


REMOTE AIR-COOLED

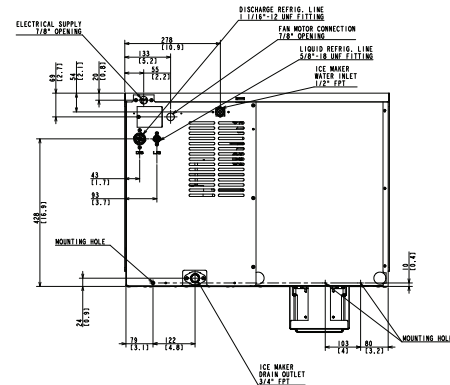
REAR VIEW



AIR-COOLED

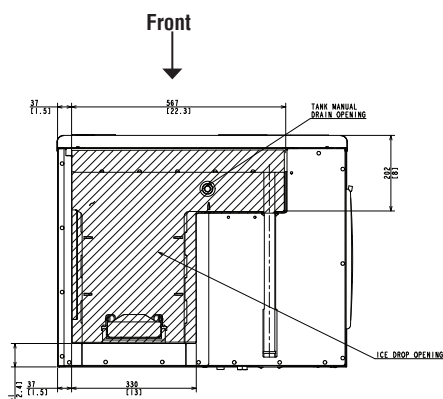


WATER-COOLED



REMOTE AIR-COOLED

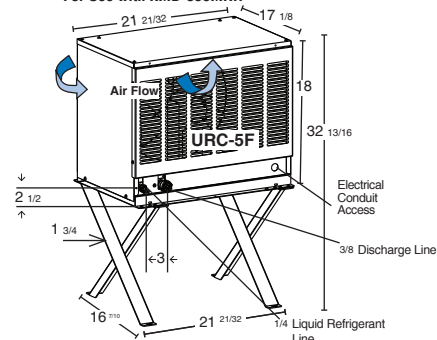
BOTTOM VIEW



AIR-COOLED Model Shown

Bottom dimensions are common for all KMD-530 Models

URC-5F Remote Condenser (Sold Separately)
For Use with KMD-530MRH



Voltage supply for the URC Remote Condenser is supplied from the Ice Maker. No additional circuit is required.

Pre-Charged Tubing Kits

(Sold Separately)

20' R404-2046-2

35' R404-3546-2

