



KML-325/500M_J

LOW-PROFILE MODULAR CRESCENT CUBER



KML-325/500M_J
03/30/17
Item # 13413

W x D x H
30" x 27^{3/8}" x 22"

KM Edge SERIES

KML-325MAJ

Air-Cooled

Shown on optional bin B-500

KML-325MWJ

Water-Cooled

KML-500MAJ ★

Air-Cooled


KML-500MWJ



Air-Cooled



Item #: _____
Project: _____
Qty: _____
AIA#: _____

Features

- ▶ Individual crescent cube
- ▶ Stainless steel evaporator
- ▶ CycleSaver™ design 

- KML-325: Up to 385 lbs. of ice production per 24 hrs.
- KML-500: Up to 543 lbs. of ice production per 24 hrs.
- Durable stainless steel exterior
- Protected by H-GUARD Plus Antimicrobial Agent 
- EverCheck™ alert system 
- Removable air filters (Air-cooled model only)
- R-404A Refrigerant

Available on Bins:

B-250PF B-800PF/SF B-1150SS B-1650SS*
B-500PF/SF B-900PF/SF B-1300SS DB-200H
B-700PF/SF B-1150SS B-1500SS* DM-200B

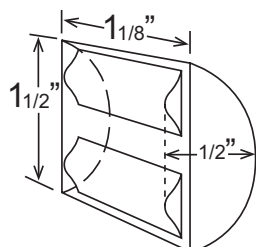
Top kit may be required. See Bin Spec Sheets. *Two unit application only.

Warranty:

3 Year Parts & Labor on entire machine. 5 Year Parts & Labor on Evaporator.
5 Year Parts on Compressor; air-cooled condenser coil.
Valid in United States, Canada, Puerto Rico and U.S. Territories. Contact factory for warranty in other countries.

		ICE PRODUCTION				WATER USAGE		ELECTRICAL						
Condenser	Model	Air / Water Temp Lbs. per 24 hours		Per Cycle		Potable	Condenser	kWh Used	Max. Fuse Size	Amperage	Voltage	Heat Rejection BTU/hr.	Shipping Weight	ENERGY STAR®
		70°/ 50°F	90°/ 70°F	Lbs.	Cubes	Gal. per 100 lbs. 90°/ 70°F	Gal. per 100 lbs. 90°/ 70°F	per 100 lbs. 90°/ 70°F	or HACR Circuit Breaker					
Air-Cooled	KML-325MAJ	380	300	8.1	360	19.9	N/A	5.72	15A	8.4A	115V/60/1	5,800	185 lbs.	
Water-Cooled	KML-325MWJ	385	355	7.9	360	17.0	106	4.51	15A	8.4A	115V/60/1	5,500	185 lbs.	
Air-Cooled	KML-500MAJ	442	400	7.9	360	16.0	N/A	5.55	20A	7.6A	115V/60/1	6,200	185 lbs.	★
Water-Cooled	KML-500MWJ	543	515	7.9	360	16.0	110	4.33	20A	9.6A	115V/60/1	8,000	185 lbs.	

KM Edge Cube Dimensions*



* approximate size in inches, image not to scale

Operating Limits

- Ambient Temp Range 45 - 100°F
- Water Temp Range 45 - 90°F
- Water Pressure 10 - 113 PSIG
- Voltage Range 104 - 127V

Service

- Allow 6" (15 cm) clearance at rear, sides, and top for proper air circulation and ease of maintenance/service.
- Removable air filters (air-cooled model only).

Plumbing

- Icemaker Water Supply Line: Minimum 1/4" Nominal ID Copper Water Tubing or Equivalent
- Icemaker Drain Line: Minimum 3/4" Nominal ID Hard Pipe or Equivalent
- Water-Cooled Model (Lines Must Be Independent of Icemaker)
- Condenser Water Supply Line: Minimum 1/4" Nominal ID Copper Water Tubing or Equivalent
- Condenser Drain/Return Line: Minimum 1/4" Nominal ID Hard Pipe (open drain system) or Copper Water Tubing (closed loop system) or Equivalent



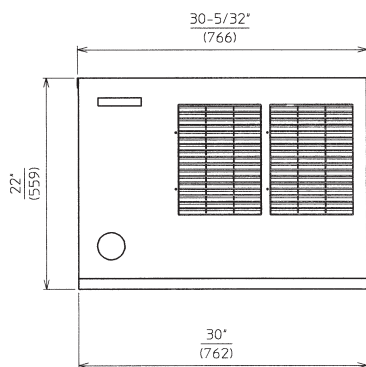
KML-325/500M_J

LOW-PROFILE MODULAR CRESCENT CUBER

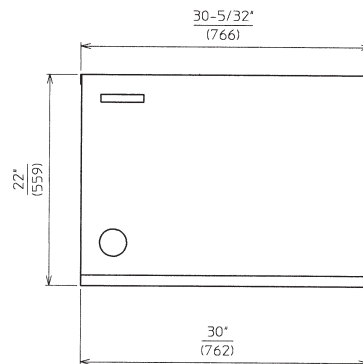


KML-325/500M_J
03/30/17
Item # 13413

FRONT VIEW

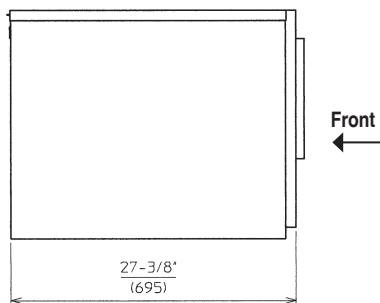


AIR-COOLED

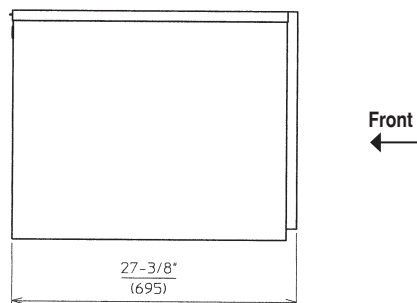


WATER-COOLED

SIDE VIEW

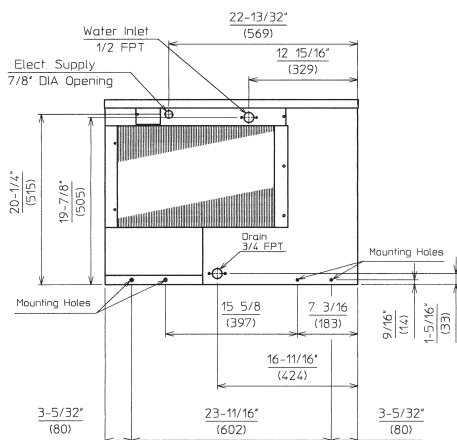


AIR-COOLED

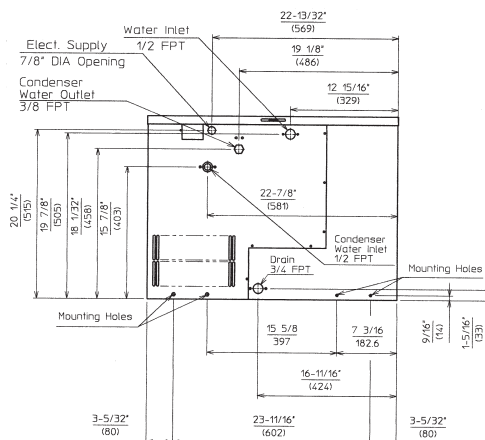


WATER-COOLED

REAR VIEW

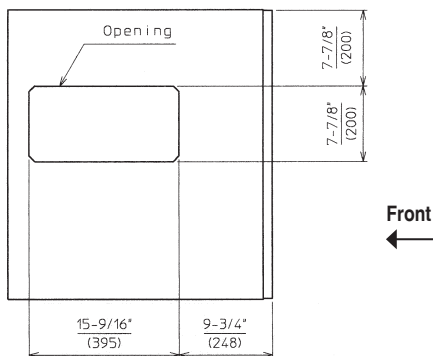


AIR-COOLED

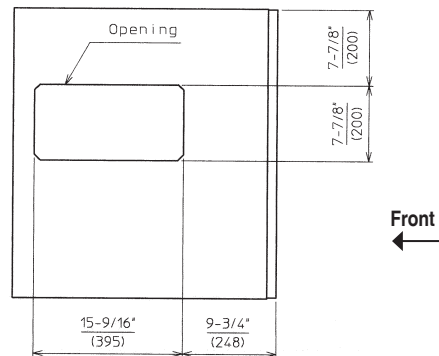


WATER-COOLED

BOTTOM VIEW



AIR-COOLED



WATER-COOLED