

Model AIMPUMP1 Drain Pump Kit Installation Manual

For Gourmet Ice Maker
Models: AIMG151GPRI, AIMG151PPRI,
AIMG151GSSI, AIMG151PSSI,
AIMG151PSSO

Important Safety Information

Improper handling can cause serious damage to the Avallon ice maker drain pump and / or injury to the user. This pump is designed for domestic indoor use only. **Do not use the unit for industrial or commercial use.** Any other use may invalidate the warranty. Please review this manual for details regarding electrical and other technical data related to this unit. The unit must be used with a properly grounded wall outlet.

Please read and follow the safety information listed below to reduce the risk of fire, electric shock, or injury. Installation should only be done by a licensed plumber.



Electrical Safety

- Do not exceed the power outlet ratings.
- It is recommended the ice maker be connected on its own circuit.
- The unit must be installed in accordance with state and local electrical codes.
- A standard electrical supply (115 V, 60Hz), that is properly grounded in accordance with the National Electrical Code and local codes and ordinances is required.
- Use outlets that cannot be turned off by a switch or pull chain.
- Always turn the unit off and unplug it from the outlet when cleaning.
- Unplug the unit if it is not going to be used for an extended period of time.
- Do not operate the unit with a power plug missing the ground plug, a damaged cord, or a loose socket.
- Be sure the ice maker is properly grounded.
- Never plug or unplug the unit with wet hands.
- Do not bypass, cut, or remove the grounding plug.
- Do not use extension cords or power strips with this unit. You may need to contact your electrician if it is necessary to use a longer cord or if you do not have a grounded outlet. Do not modify the power cord's length or share the outlet with other appliances.
- Do not start or stop the unit by switching the circuit's power on and off.
- If the power cord is damaged, it must be replaced by the manufacturer or a qualified technician.
- Never repair the unit while it is plugged in.
- Immediately unplug the unit if it makes strange sounds, emits smells, or smoke comes out of it, and contact customer service.
- Do not remove any part of the casing unless you are instructed to do so by an authorized technician.
- You should never attempt to repair the unit yourself.
- Contact customer service for service options if the unit needs service.



Warning: Installation should only be done by a licensed plumber.

Electrical Requirements

ELECTRIC SHOCK HAZARD!



- Plug into a grounded 3-prong outlet.
- Never remove the grounding prong from the plug.
- Never use an adapter to bypass the grounding prong.
- DO NOT use an extension cord.
- Failure to follow these instructions can result in fire, electrical shock, or death.

Before you move your ice maker into its final location, it is important to make sure you have the proper electrical connection:

- A standard electrical supply (115 V, 60Hz), properly grounded in accordance with the National Electrical Code and local codes and ordinances, is required.
- It is recommended that a separate circuit, serving only your ice maker, be provided. Use receptacles that cannot be turned off by a switch or pull chain.
- The fuse (or circuit breaker) size should be 15 Amps.

Recommended Grounding Method

For your personal safety, this appliance must be grounded. It is equipped with a power supply cord that has a 3-pronged grounding plug. To minimize possible shock hazard, the cord must be plugged into a mating 3-pronged wall socket, and grounded in accordance with the National Electrical Code and local codes and ordinances. If a mating wall socket is not available, it is the personal responsibility of the customer to have a properly grounded, 3-prong wall receptacle installed by a qualified electrician.

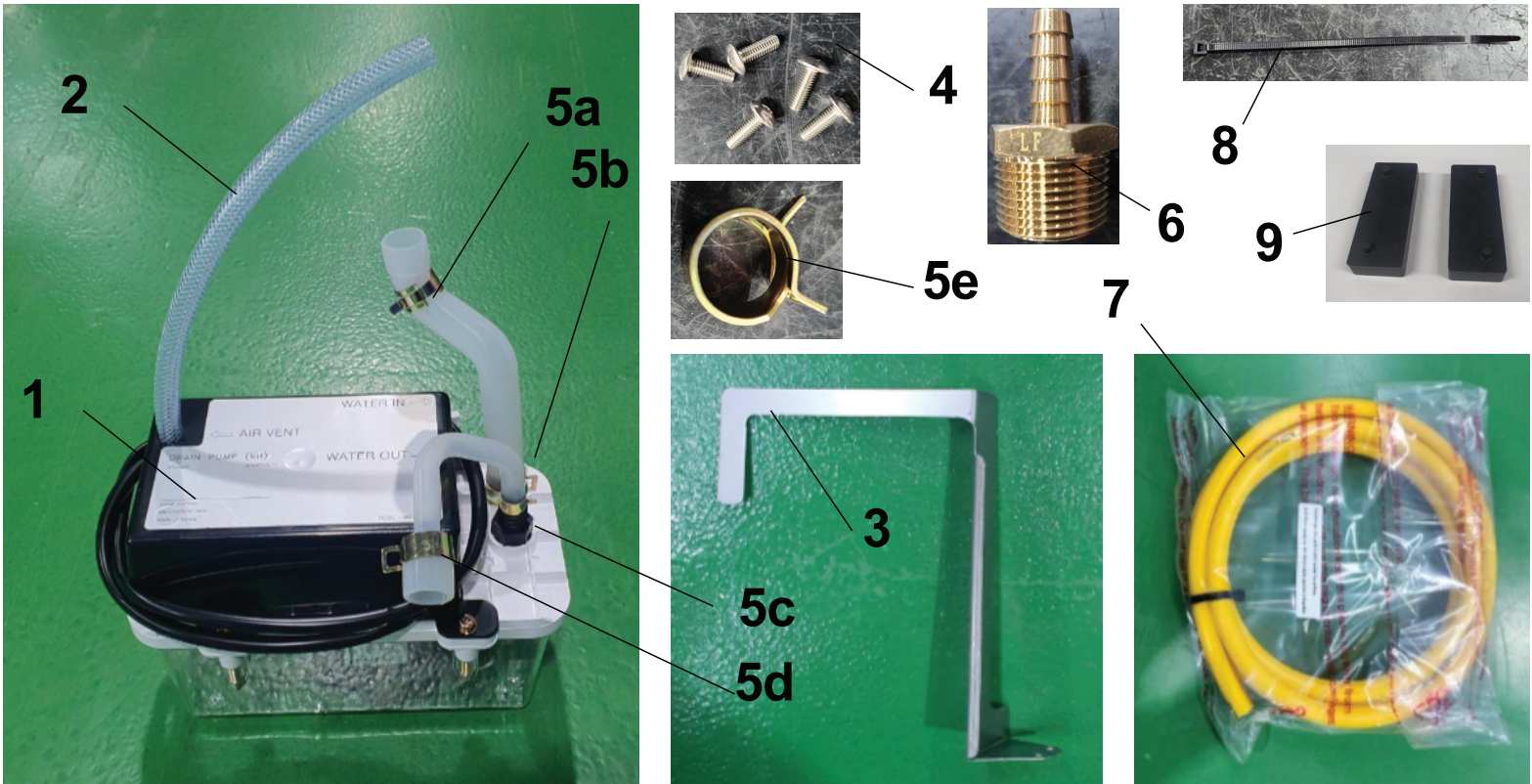


Note: A standard electrical supply (115 VAC only, 60 Hz), properly grounded in accordance with National Electrical Code and local codes and ordinances, is required.

Table of Contents

- Important Safety Information..... 2
- Pump Kit Accessories 5
- Installation..... 6
 - Tools required..... 6
 - Installation steps..... 6
- Maintenance 10

Pump Kit Accessories



No.	Part	Quantity
1	Drain Pump	1
2	Air Vent Hose (ID 3/8", L 11")	1
3	Mounting Bracket	1
4	M4*12 Mounting Bracket Screw	5
5a	Hose Spring Clamp $\varnothing 0.79''$ (20mm) for Hose connected to Drain Pump Inlet	1
5b	Hose Spring Clamp $\varnothing 0.70''$ (18mm) for Hose connected to Drain Pump Inlet	1
5c	Hose Spring Clamp $\varnothing 0.47''$ (12mm) for Hose connected to Drain Pump Outlet	1
5d	Hose Spring Clamp $\varnothing 0.91''$ (23mm) for Hose connected to Drain Pump Outlet	1
5e	Hose Spring Clamp $\varnothing 0.63''$ (16mm) for Hose connected to Drain Adapter	1
6	3/4" NPT => 3/8" Drain Adapter	1
7	Drain Hose (ID 3/8", L 9.8')	1
8	Cable Tie	1
9	Pump Cushion (Rubber)	2

Installation

The pump kit should be installed by a licensed plumber in accordance with local electrical and plumbing code requirements.

Tools required

- Phillips screwdriver
- Pliers

Installation steps

1. Open the pump kit and confirm all parts listed in the Pump Kit Accessories section are included.
2. Turn off the ice maker and disconnect the plug from the wall outlet.
3. Position the ice maker so the back of the unit can be accessed and serviced.
4. Remove the screws on the upper back panel. Gently lift the rear section of the lid above the tab on the back panel, slide the panel's tab underneath the lid, and remove the panel (Figure 1).
5. Remove the screws on the lower back panel and remove the panel (Figure 2).



Figure 1



Figure 2

6. Remove the two screws connecting the water supply and drain bracket to the cabinet (Figure 3).
7. Gently pull the bracket forward and completely remove the tube between the ice bin and the back of the drain socket (Figure 4).

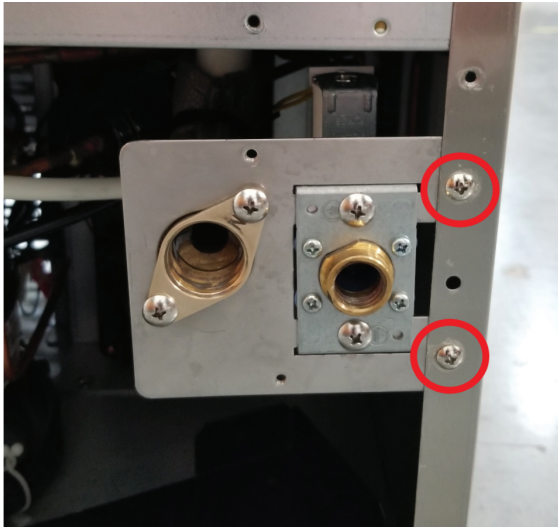


Figure 3

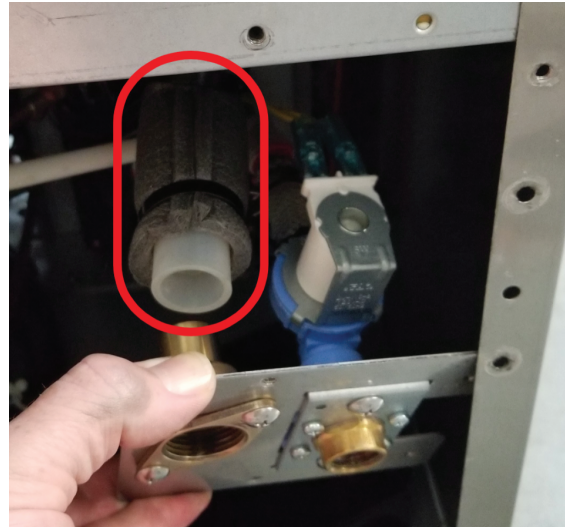


Figure 4

8. Place the drain pump and pump cushions into position inside the cabinet and attach the pump's ice bin drain tube to the bottom of the ice bin (A) and the pump's discharge tube to the drain socket (B) using the hoses and clamps provided (Figure 5). Make sure all connections are secure to prevent any water leakage.
9. Fasten and secure the pump's mounting bracket to its mounts inside the cabinet using the screws provided (Figure 6).



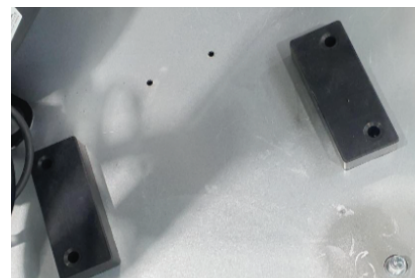
4 holes on the bottom of the base plate



4 protrusions on the bottom of the drain pump



Each pump cushion has 2 protrusions and 2 holes



4 holes on top of pump cushions

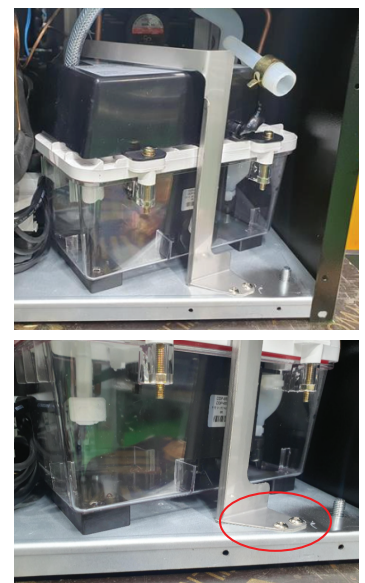


Figure 6

Figure 5

10. The ice maker has a pre-installed air vent hose with one end attached to the bottom of the drain pan and the open end attached below the ice bin structure. Disconnect the open end of the hose from below the ice bin and securely attach it to the drain pump. Alternatively, the pump kit includes an additional air vent hose that may be used if the pre-installed hose needs replacing (Figure 7).

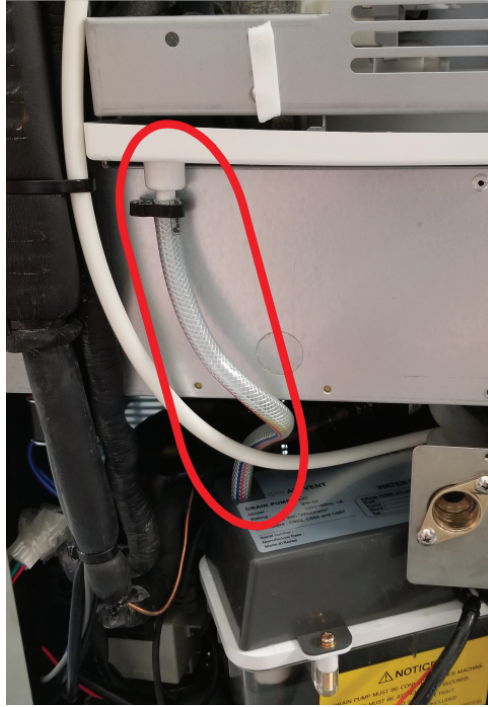


Figure 7



Note: The air vent hose must be installed or the drain will not operate correctly. Do not kink or bind the air vent hose.

11. Reattach the water supply and drain bracket to the cabinet (Figure 8).

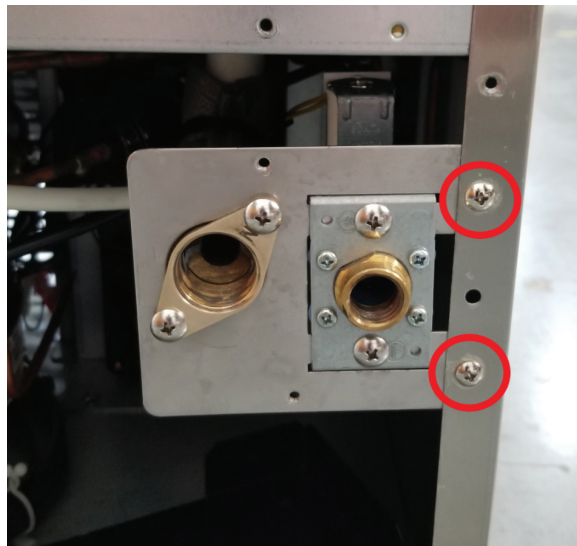


Figure 8

12. Remove the plastic covering from the ice maker's connector and separate the jumper section (Figure 9).
13. Securely attach the pump connection to the ice maker connection making sure to match the order of the wire colors at both ends (Figure 10). Replace the plastic covering over the connectors and resecure the cable if necessary using the cable tie provided.

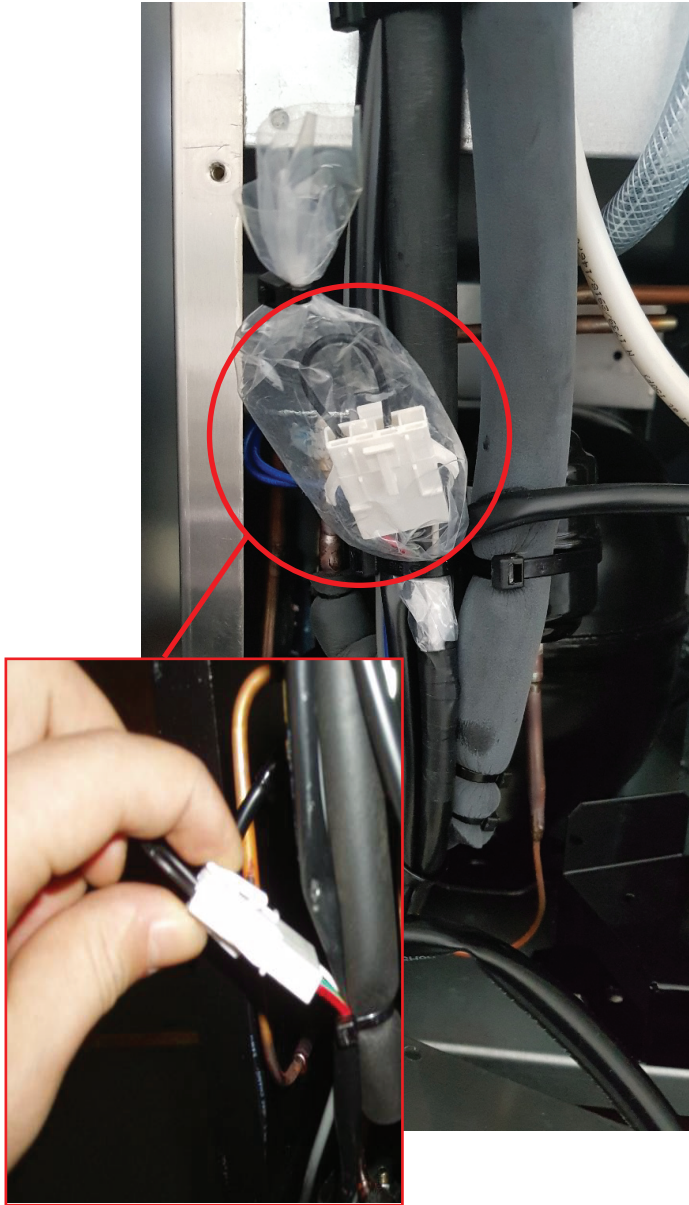


Figure 9

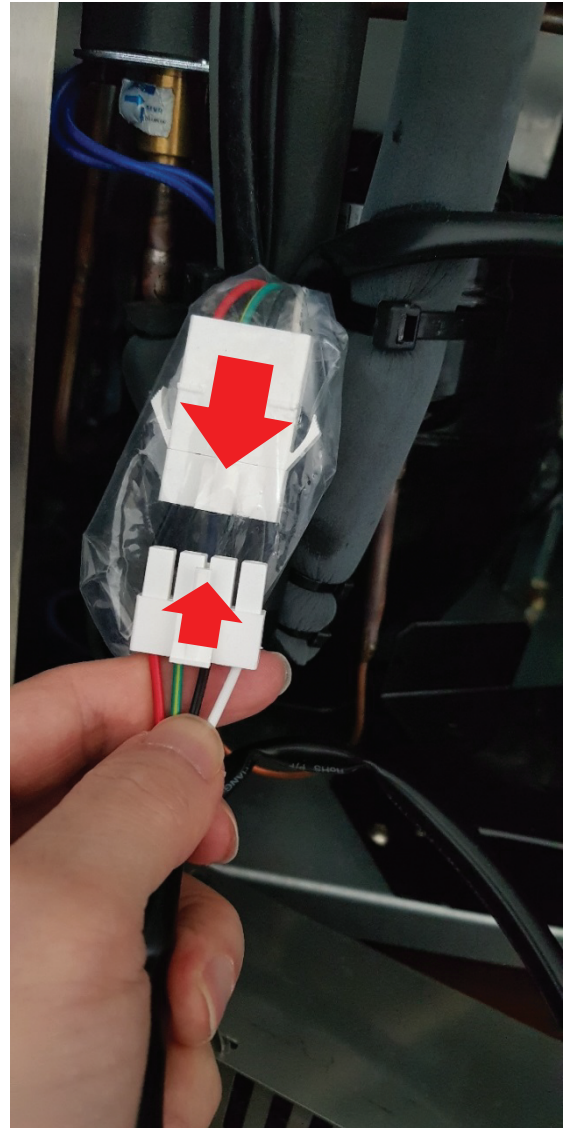


Figure 10



Note: Do not discard the jumper connector. If the pump is removed the jumper connector must be reattached to the ice maker's connector in order for the ice maker to operate properly.

14. Reattach the lower (first) and upper back panels of the ice maker.
15. Wrap the threads of the supplied 3/4" NPT => 3/8" drain adapter with Teflon tape, then install the adapter into the drain socket (Figure 11).



Figure 11

16. Attach one end of the supplied 3/8" drain hose to the drain adapter using the clamp provided.
17. Connect the other end of the drain hose to the drain. The drain must be within 20' horizontally and 8' vertically and installed by a licensed plumber. Do not kink or bind the drain hose or overflow may occur.
18. Reconnect the power plug to the wall outlet and turn on the ice maker.
19. Pour 2-3 liters of water into the ice bin making sure there are no leaks and the pump drains the water correctly.
20. The ice maker is now ready for normal operation.



Warning: Drain should be installed by a licensed plumber.



Important:

- Do not touch the power plug when your hands are wet.
- Never unplug the unit by pulling on the cord.

Maintenance

Periodic maintenance will ensure efficiency, top performance, and a longer life for your unit.

At least every 6 months:

1. Check and make sure that no foreign substance has entered the drain hose and that all water drains freely into the drain. Any blockage may cause an overflow. Make sure the drain hose is not bent or kinked.
2. Check the air vent hose for proper air flow. Make sure the hose is not blocked, bent or kinked.
3. Following the cleaning and maintenance instructions in the ice maker's owner's manual to clean and sanitize the ice maker regularly. Build up or grime in the ice maker may also affect the pumps performance.

