

*Belle Forêt*  
collection

# N201

## SINGLE HANDLE BAR FAUCET

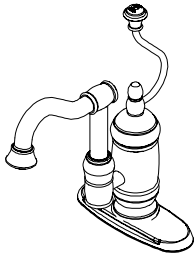
---

### Product Features

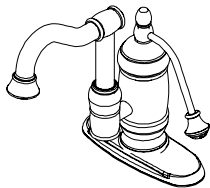
Single Post Mount or 4" Centerset Installation  
2.2 GPM @ 60PSI water saving aerator  
Brass body with copper supply inlets  
1/2" 14 NPS Inlet  
Ceramic cartridge

Handle:

- N201 07 Metal spiral handle
- N201 08 Metal pump handle



**N201 07**



**N201 08**

### Standard/Approvals

N201 meets or exceeds:

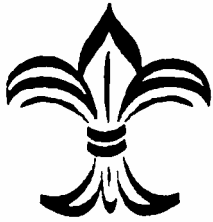
- ANSI/ASME A112.18.1
- ANSI/NSF 61 – Sec 9
- IAPMO/UPC
- California Proposition 65
- Massachusetts

UPC®



### PRODUCT SPECIFICATION:

Single-handle bar faucet shall have a brass body, ceramic cartridge, 6-15/16" spout and spiral or pump handle. Product shall be able to be installed in either single hole or 4" centerset applications. Product shall be Belle Forêt model N201 \_\_\_\_\_.

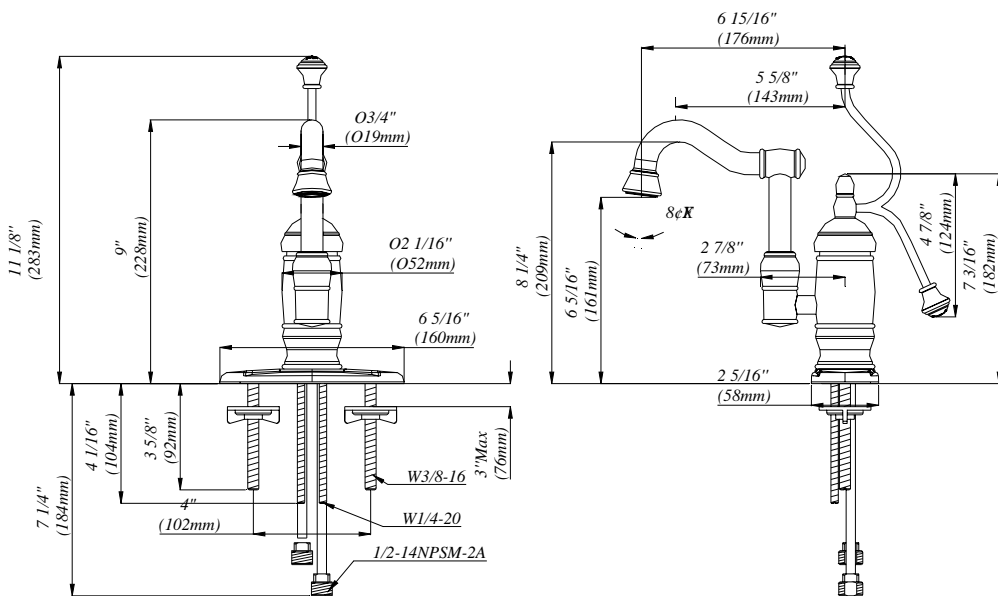


*Belle Forêt*  
collection

# N201 SINGLE HANDLE BAR FAUCET

## 4" Centerset Installation Shown

(With Deckplate)

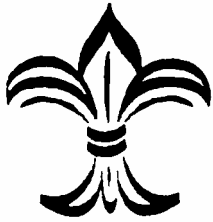


### Other Specifications

Faucet Hole diameter	1-1/2"
Deck Plate	6-1/4" X 2-5/16"
Single Post Mount Installation (less deckplate)	
Max Deck Thickness	3-3/8"
Body Base Diameter	2-1/16"
Spout Height	8-5/8"
Aerator Clearance	5-15/16"
Spout Clearance	8-1/8"

### Available Finishes

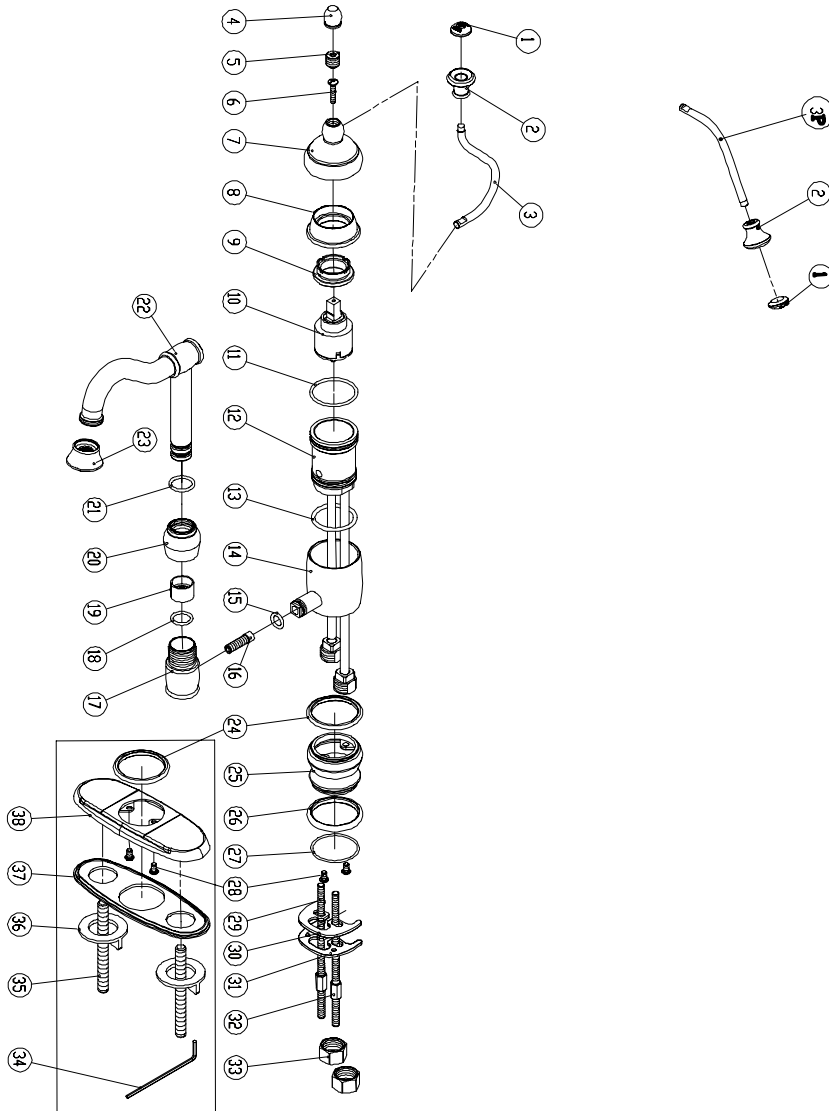
- Chrome
- Polished Brass
- Stainless Steel
- Oil Rubbed Bronze

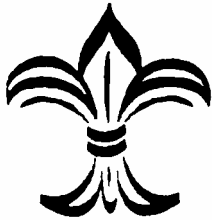


Belle Forêt  
collection

# N201 SINGLE HANDLE BAR FAUCET

## PARTS BREAKDOWN





*Belle Forêt*  
collection

# N201

## SINGLE HANDLE BAR FAUCET

### PARTS LISTING

No	Name	Kit# / Part#	Q'ty	No	Name	Kit# / Part#	Q'ty
1	Porc. Index	N/A	1	18	O-Ring	663204N	1
2	Knob		1	19	Clip ring		1
3	Spiral wire		1	21	O-Ring		1
3P	Pump wire		1	20	Bonnet	N/A	1
4	cap	663294xx	1	22	Spout		1
5	Screw		1	23	Aerator	500767Nxx	1
6	Screw		1	24	Trim ring	021126xx	2
34	Allen wrench		1	25	Body base	N/A	1
7	Canopy	N/A	1	26	Trim ring	021125xx	1
8	Cap		1	27	O-Ring	N/A	1
9	Retainer nut		1	28	Screw		4
10	Cartridge	663293N	1	29	Bolt		2
11	O-Ring		1	30	Rubber washer		1
12	Body assembly	N/A	1	31	Metal washer		1
13	O-Ring		1	32	Mounting nut		2
14	Sleeve		1	33	Supply nut		2
15	O-Ring		1	35	Bolt		2
16	Screw		1	36	Nut	2	
17	Spout base		1	37	Bottom plate	1	
					38	Deck plate	1

xx designates finish matched parts.