



CFMTM
CONTINENTAL FAN

*better AIRFLOW by DESIGN*TM

Residential Fans & Air Purifiers



BATHROOM EXHAUST FANS

AEROFAN BATHROOM FANS

Whisper-quiet, two-speed operation sets the AeroFan apart from the competition. These traditional in-ceiling fans are engineered to provide superior ventilation and efficient performance, delivering powerful, effective and quiet ventilation for any bathroom.



Design Features

- 2 - speed operation
- Steel housing with corrosion resistant finish
- Long-life ball bearing condenser motor
- Power rating is 120V / 60 Hz
- Thermal overload protection
- Built-in counterbalanced damper
- Adjustable mounting brackets
- Designed for easy installation
- UL Listed for use over a tub/shower enclosure with a GFCI circuit (selected units only)
- Fits 4" & 5" ducts



FAN OPTIONS

Accessories

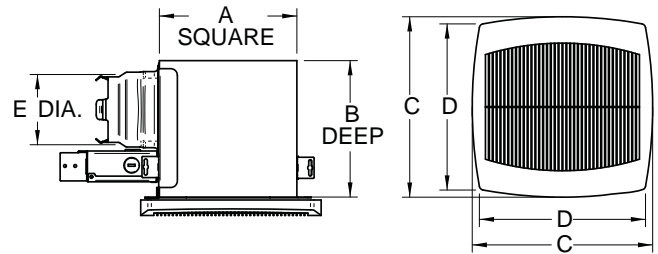
Controls

Decorative Grilles

MODEL	NON-LIGHTED FANS				LIGHTED FANS							
	TBF90		TBF120		TBFR90L		TBFS90L		TBFR120L		TBFS120L	
	Low	High	Low	High	Low	High	Low	High	Low	High	Low	High
Operating Speed												
Air Volume (cfm)	50	80	80	110	50	80	50	70	70	100	70	90
Noise (Sones)	0.9	2.0	1.0	2.0	0.4	2.0	0.6	1.5	0.8	2.0	1.0	2.0
Speed (rpm)	750	1050	775	1050	750	1050	750	1050	775	1050	775	1050
Currents (Amps)	0.2	0.2	0.3	0.3	0.2	0.2	0.2	0.2	0.3	0.3	0.3	0.3
Power Consumption (Watts)												
- Fan	21.1	26.1	31.9	35.4	20.6	23.9	19.6	23.4	32.3	34.7	31.1	32.6
- Lamp (Compact Fluorescent)	n/a	n/a	n/a	n/a	26	26	26	26	26	26	26	26
- Night Light	n/a	n/a	n/a	n/a	4	4	4	4	4	4	4	4
Tub / Shower Mounting*	Yes		Yes		Yes		No		Yes		No	

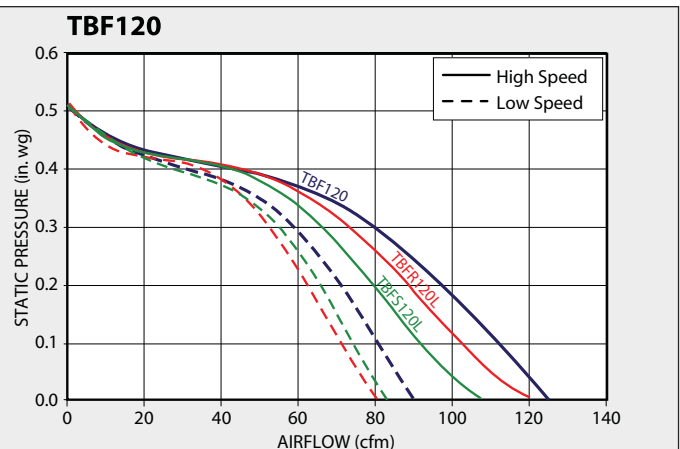
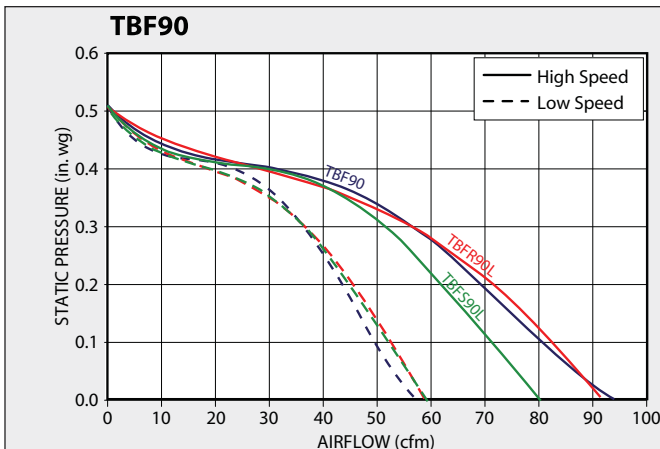
*THESE FANS ARE ACCEPTABLE FOR USE OVER A BATHTUB OR SHOWER ENCLOSURE WHEN INSTALLED IN A GFCI PROTECTED CIRCUIT.

MODEL	DIMENSIONS IN INCHES*					SHIP WT (LBS) 1-unit / 4-units
	A	B	C	D	E	
TBF90	8.0	8.0	10.3	9.4	4" & 5"	10 / 41
TBF120	9.5	8.0	11.8	10.8	4" & 5"	11 / 45
TBFS90L	8.0	8.5	10.3	9.4	4" & 5"	11 / 45
TBFR90L	8.0	8.5	10.3	9.4	4" & 5"	11 / 45
TBFS120L	9.5	8.5	11.8	10.8	4" & 5"	13 / 53
TBFR120L	9.5	8.5	11.8	10.8	4" & 5"	13 / 53



*DO NOT USE FOR CONSTRUCTION

CONSULT FACTORY FOR CERTIFIED PRINTS



PERFORMANCE DATA AT 0.1" SP AS PER HVI.

SUPPLY & EXHAUST GRILLES

Enhance your bathroom décor with Continental Fan's attractive ventilation grilles. These sleek and attractive grilles compliment any bathroom interior and maximize your fan's performance.



Adjustable Ventilation Grilles

GR adjustable ventilation grilles are designed for ceiling or wall applications. The fully adjustable ventilation grilles are easy to install and adjust. GR grilles are ideal for use with in-line fans.

- ❑ GR100 Adjustable Grille 4", Collar
- ❑ GR150 Adjustable Grille 6", Collar
- ❑ GR200 Adjustable Grille 8", Collar
- ❑ GR100-6PK Adjustable Grille 4", Collar - 6 pcs
- ❑ GR150-6PK Adjustable Grille 6", Collar - 6 pcs



AeroGrille Ventilation Grilles

AeroGrilles feature quality construction and allow for whisper quiet airflow. Designed for use with either in-line or external mount duct fans, they fit a standard 6" duct.

- ❑ AG150 AeroGrille 6"
- ❑ AG150-C AeroGrille 6", Collar
- ❑ AG150-CD AeroGrille 6", Collar, Damper



Retro Ventilation Grilles

Square or round retro supply and exhaust grilles are ideal for use with in-line duct fans.

- ❑ RTR678 Round Grille, 6"-7"-8", Stepped Collar
- ❑ RTS678 Square Grille, 6"-7"-8", Stepped Collar



Decorative Ventilation Grilles

These attractive grilles are designed for use with non-lighted versions of AeroFan bathroom fans.

- ❑ TGRRD90 Grille TBF90, Round Silver/Chrome
- ❑ TGRRD120 Grille TBF120, Round Silver/Chrome
- ❑ TGRSQ90 Grille TBF90, Square Silver/Chrome
- ❑ TGRSQ120 Grille TBF120, Square Silver/Chrome
- ❑ TGRCH90 Grille TBF90, Rectangular Silver/Chrome
- ❑ TGRCH120 Grille TBF120, Rectangular Silver/Chrome

DFC DIGITAL FAN CONTROL

Indoor Air Quality (IAQ)

Indoor Air Quality (IAQ) has become an important part of our everyday lives. IAQ affects us in the workplace, schools and more significantly, in our homes. The American Society of Heating, Refrigeration and Air-Conditioning Engineers publishes ASHRAE 62.2, a standard that defines the minimum ventilation requirement and acceptable indoor air quality in low-rise residential buildings.

The DFC Digital Fan Control uses smart technology to address the requirements of ASHRAE 62.2, and it is capable of automatically calculating the airflow required to achieve acceptable indoor air quality. It is designed to provide increased ventilation control that is efficient and affordable. Its unique architecture offers a choice of five distinct modes of operation, allowing the control to be programmed to suit a user's preference and lifestyle. When combined with an AXC In-Line Duct Fan, the DFC Digital Fan Control provides an excellent way of meeting IAQ standards.



Design Features

- Easy to install
- Simple to program
- Convenient display with backlight
- User friendly icons
- Easy to read digital clock
- Automatic Daylight Savings Time function
- ASHRAE 62.2 ventilation standard
- Promotes proper Indoor Air Quality (IAQ)
- Ideal for home & bathroom ventilation
- Available in white or ivory
- Designed for single-speed fan operation
- Five year warranty

Modes of Operation

The DFC Digital Fan Control allows the user to choose from five modes of operation:

1. Ventilation Mode



The Ventilation Mode is designed to achieve ASHRAE 62.2 acceptable indoor air quality. In this mode, the fan control operates on a 60 minute cycle, automatically determining the percentage of run time based on floor space, number of rooms and fan capacity. For example, if the fan is On for 15 minutes, it will be Off for 45 minutes.

2. Customized Cycle Mode



The Customized Cycle Mode allows the user to set the On and Off periods for the fan. Once selected, the control will cycle the fan automatically based on the user's preference.

3. Daily On/Off Mode



The Daily On/Off Mode allows the user to program the fan to turn On and Off once a day, at user defined times.

4. Manual Mode



In the Manual Mode, the control operates the fan like a regular on/off switch. Simply pressing the main button turns the fan On or Off.

5. Countdown Mode



The Countdown Mode allows the fan to operate for any period between 10 and 60 minutes. At the end of the countdown period, fan operation will return to its prior programmed mode.

VENTILATION AIR REQUIREMENTS (CFM)

Floor Area (ft ²)	Bedrooms				
	0-1	2-3	4-5	6-7	>7
< 1,500	30	45	60	75	90
1,501 - 3,000	45	60	75	90	105
3,001 - 4,500	60	75	90	105	120
4,501 - 6,000	75	90	105	120	135
6,001 - 7,500	90	105	120	135	150
> 7,500	105	120	135	150	165

Table 4.1A, ASHRAE 62.2-2007

Fan Controls



Variable Speed Controls (Solid State)

VSC3 and VSC9 variable speed controls are designed for AC motors.

- VSC3 Variable Speed Control - 3 amp - 3 Wire
- VSC9 Variable Speed Control - 9 amp - 3 Wire



Digital Timers

Time control auto shut off, in preset intervals, allows for proper ventilation and energy savings. The red LED indication light remains lit until the unit shuts off.

- DT60 Digital Timer 10 - 20 - 30 - 60 Minutes



Spring Wound Timer

Spring wound timer provides energy savings by limiting the "on-time" of the fan, up to 60 minutes. CT timers are easily installed in a standard electrical box. Cover plate not included.

- CT100V Spring Wound Timer 0 - 1 Hour



On/Off Switch (w/Pilot Light)

The neon light is ON when the switch is in the ON position. 15Amp, 120V Single Pole/ AC Switch. Cover plate not included.

- PLS120V ON/OFF Switch w/Pilot Light



Thermostat

The TST120V thermostat is suitable for direct connection with any resistance heating element or unit heater.

- TST120V Line Voltage Thermostat, 120V



Dehumidistat (for Humidity Control)

Wall mounted DHS dehumidistat allows for "problem" areas to be targeted for ventilation. Regulates relative humidity from 20% to 80% RH (8% RH Maximum Differential).

- DHS120V Dehumidistat



Current Sensor (Solid State)

The CS120VAF current sensor provides a compact, low cost method of detecting AC current. It is ideal for ON/OFF sensing of remote equipment.

- CS120AF Current Sensor, 120V, Solid State



Pressure Switch (with Time Delay)

Designed for HVAC or Energy Management applications, PST120V pressure switch is an airflow proving switch with an electronic cycle timing board.

- PST120V Pressure Switch w/Time Delay



Auto Transformer

TF auto transformer allows for voltage to be regulated to 60V & 90V increments. Channel frame mounting and metal end shells make for a simple installation.

- TF120V Auto Transformer - 90/60V

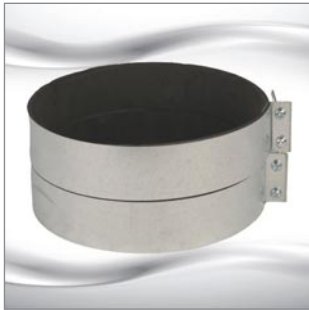
Fan Accessories



Flexible Insulated Duct

UL listed 181 class 1 air duct, wrapped with R4.2 insulation and black polyethylene cover. Ideal for long run applications for HVAC, bathroom and general venting applications.

- FL100 Flexible Insulated 4" Duct - 12.5' Length
- FL100-25 Flexible Insulated 4" Duct - 25' Length
- FL125 Flexible Insulated 5" Duct - 25' Length
- FL150 Flexible Insulated 6" Duct - 25' Length
- FL200 Flexible Insulated 8" Duct - 25' Length
- FL250 Flexible Insulated 10" Duct - 25' Length
- FL300 Flexible Insulated 12" Duct - 25' Length



Mounting Clamps for Rigid Duct

MC mounting clamps are designed for use with rigid duct. The foam neoprene layer creates an air tight and solid installation for in-line duct fans.

- MC100 Mounting Clamps for Rigid 4" Duct (2pc)
- MC125 Mounting Clamps for Rigid 5" Duct (2pc)
- MC150 Mounting Clamps for Rigid 6" Duct (2pc)
- MC200 Mounting Clamps for Rigid 8" Duct (2pc)
- MC250 Mounting Clamps for Rigid 10" Duct (2pc)
- MC300 Mounting Clamps for Rigid 12" Duct (2pc)
- MC355 Mounting Clamps for Rigid 14" Duct (2pc)



Gear Clamps for Flexible Duct

GC stainless steel gear clamps are an easy and effective way to connect an in-line duct fan to flexible insulated duct and other auxiliary pieces.

- GC150 Gear Clamp for 4" - 6" Duct, Stainless Steel
- GC200 Gear Clamp for 5.5" - 8.5" Duct, Stainless Steel



Duct Reducers/Increases

DRI duct reducers/increasers are used to transition a duct from a larger or smaller size. Available in 28 Ga.

- DRI-04-03 Duct Reducer/Incraser, 4" - 3" Duct, Plastic
- DRI-06-04 Duct Reducer/Incraser, 6" - 4" Duct, Galvanized
- DRI-08-06 Duct Reducer/Incraser, 8" - 6" Duct, Galvanized
- DRI-10-08 Duct Reducer/Incraser, 10" - 8" Duct, Galvanized
- DRI-12-10 Duct Reducer/Incraser, 12" - 10" Duct, Galvanized
- DRI-14-12 Duct Reducer/Incraser, 14" - 12" Duct, Galvanized

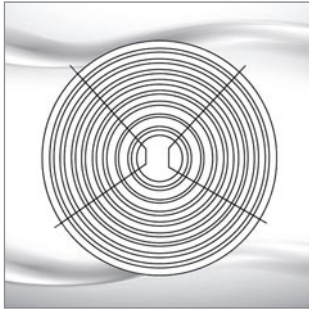


Wye Fittings

WYE fittings provide an airtight branch fitting. The crimp and bead edging ensures an easy connection. Available in 28 Ga.

- WYE-04 Y-Fitting, 4"x4"x4" Duct
- WYE-06 Y-Fitting, 6"x6"x6" Duct
- WYE-08 Y-Fitting, 8"x8"x8" Duct

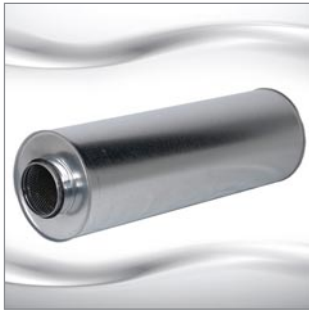
Fan Accessories



Guards

PG guards are used in various applications. Utilize a PG guard as a grille, or mount it directly on the outlet/inlet of a fan to allow for a safe installation.

- PG100 Guard, 4" Duct
- PG125 Guard, 5" Duct
- PG150 Guard, 6" Duct
- PG200 Guard, 8" Duct
- PG250 Guard, 10" Duct
- PG300 Guard, 12" Duct



Sound Attenuators

SA sound attenuators are designed to reduce fan noise traveling along ventilation ducts. They may be used in either supply or exhaust ducts.

- SA100 Sound Attenuator, 4" Duct
- SA150 Sound Attenuator, 6" Duct
- SA200 Sound Attenuator, 8" Duct
- SA250 Sound Attenuator, 10" Duct
- SA300 Sound Attenuator, 12.4" Duct
- SA400 Sound Attenuator, 16" Duct



Louvered Shutters (with Tail Piece)

LS louvered shutters are designed as plastic molded vent hoods. The weather resistant louvered construction prevents wind and rain from entering the vent.

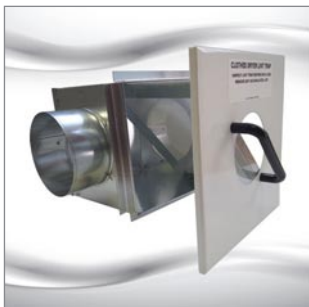
- LS100-4W Louvered Shutter, 4" Duct
- LS150-6W Louvered Shutter, 6" Duct



Roof & Wall Caps

Black plastic roof caps include damper, screen, and collar. Aluminum wall caps include spring controlled damper.

- RC100 Roof Cap, 4" Duct, Black Plastic
- RC150 Roof Cap, 6" Duct, Black Plastic
- RC200 Roof Cap, 8" Duct, Black Plastic
- WC100 Wall Cap, 4" Duct, Aluminum, Reducer 4" - 3"
- WC150 Wall Cap, 6" Duct, Aluminum
- WC200 Wall Cap, 8" Duct, Aluminum



Lint Trap

LT100 lint traps offer a simple solution for reducing maintenance associated with dryer vents. The one-piece door with screen slides easily into place, without having to fuss with flimsy springs or clips. Its versatile design allows for either wall or ceiling mount installation.

- LT100 Lint Trap for Dryer, 4" Duct

DAMPERS

BDD BACKDRAFT DAMPERS



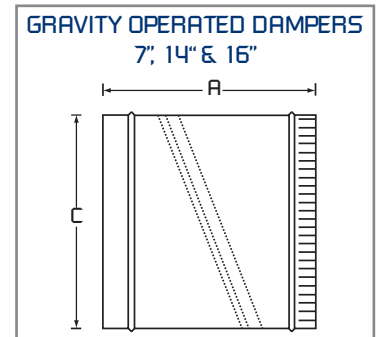
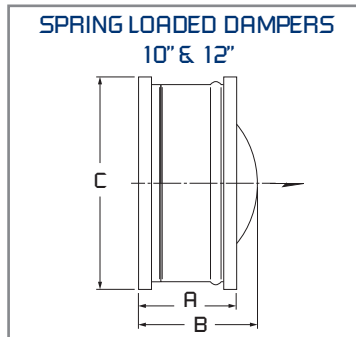
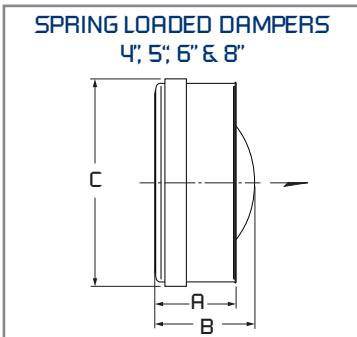
Spring Loaded Dampers

- Neoprene damper seal to minimize air leakage
- Steel housing, aluminum butterfly damper blades
- Gasket designed to withstand temperatures from -22 F to 180 F
- Requires from 0.04 to 0.08 in. wg pressure to open
- Simple installation in any position - entire assembly inserts into duct
- Exterior foam gasket assures a tight seal against duct
- 4", 5", 6" & 8" sizes include stamped metal sleeve with center pin / post designs
- 10" & 12" sizes include rolled metal sleeve with center post design



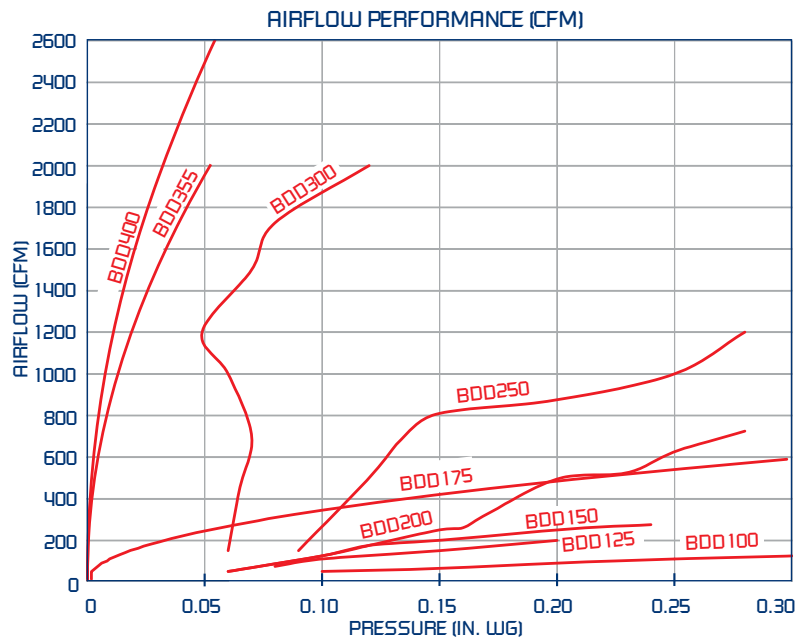
Gravity Operated Dampers

- Low air leakage design
- Galvanized steel housing, aluminum butterfly damper blades
- Gravity operated closure
- Install in horizontal or vertical (upblast only) position
- Suitable for supply or exhaust applications
- Available in 7", 14" & 16" sizes



MODEL	DIMENSIONS IN INCHES*			Gauge
	A	B	C (Nominal)	
SPRING LOADED DAMPERS				
BDD100	1.8	2.0	4	20
BDD125	2.0	2.5	5	20
BDD150	2.5	3.0	6	20
BDD200	2.8	3.8	8	20
BDD250	4.8	6.0	10	20
BDD300	6.3	6.8	12	20
GRAVITY OPERATED DAMPERS				
BDD175	7.0	-	7	28
BDD355	12.0	-	14	24
BDD400	14.0	-	16	22

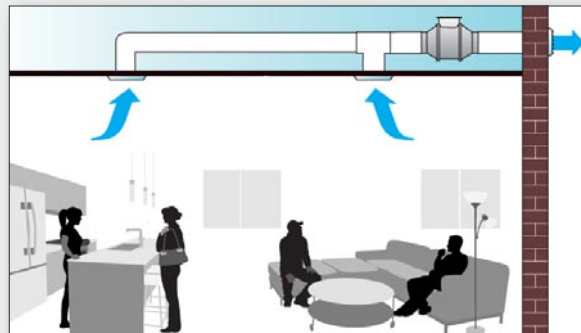
*DO NOT USE FOR CONSTRUCTION
CONSULT FACTORY FOR CERTIFIED PRINTS



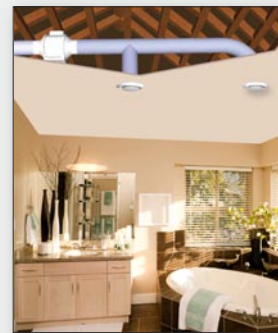
HOME VENTILATION SOLUTIONS

There are many locations in a home where air movement may be necessary:

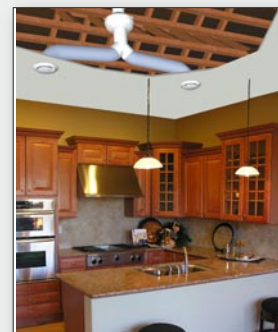
Duct Boosting



Bathroom Exhaust



Kitchen Exhaust



Additional Applications

- Dryer boosting
- Garage ventilation
- Attic ventilation
- Whole house ventilation
- Crawl space ventilation
- General kitchen exhaust
- Basement kitchens, washrooms
- Apartments/townhouses
- Indoor pool ventilation



How much airflow is required?

The following recommendations follow minimum guidelines published by the Home Ventilating Institute (HVI):

Bathroom less than 100 square feet:

- 1 cfm per square foot of floor area. A minimum of 50 cfm is the required ventilation rate.

Bathroom larger than 100 square feet:

- To calculate the proper ventilation rate, add the cfm requirement for each fixture; toilet 50 cfm, shower 50 cfm, bathtub 50 cfm, jetted tub 100 cfm.

Note: For proper sizing, the static pressure (SP) needs to be calculated. For typical applications, you may read from the 0.2" SP column for a selection.

BATHROOM EXHAUST

HOW WELL DOES YOUR BATHROOM EXHAUST FAN PERFORM?

As our homes continue to grow, so do our bathrooms. A lot of time and effort goes into renovating and creating the ideal bathroom. The bathroom has become a space of luxury and relaxation the entire family enjoys. We crave the tranquil spaces, equipped with everything from traditional tubs and showers, to steam baths, whirlpools, and saunas.

To ventilate these new spaces properly and to prevent mold and mildew buildup, multiple venting points and a powerful yet quiet exhaust system are required. Low quality, noisy, ceiling mounted bath fans are not capable of providing this. There is, however, a simple solution. Continental Fan's remote mount in-line duct fans provide the strong, quiet, and effective exhaust required to meet today's bathroom ventilation needs!

AXC, AXP, and MFT fans can be mounted in the attic. If space is limited, select an EXT external mount duct fan, which can be mounted to an exterior wall, or an MBI centrifugal in-line fan, which can be mounted between two studs.

If a traditional in-ceiling fan is your preference, then the high quality AeroFan is an ideal solution. The sleek design of the AeroFan is available in lighted or non-lighted versions.

FAN OPTIONS & ACCESSORIES



EXT
External Mount Duct Fans



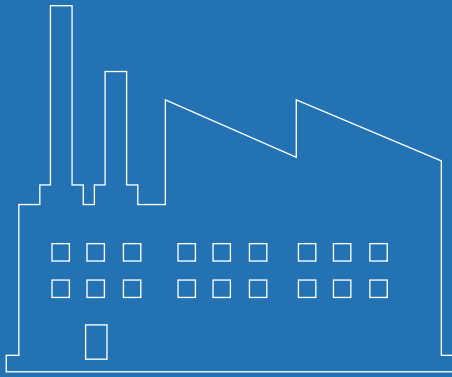
AXC
In-Line Duct Fans



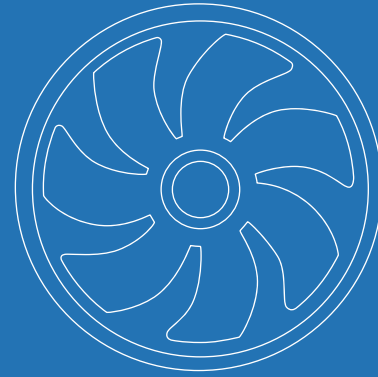
MBI
Centrifugal In-Line Fans



AeroFan
Bathroom Fans



***Industrial Fans
& Blowers***



***OEM Solutions
& Custom Fans***



***Commercial Fans
& Dampers***



***Residential Fans &
Air Purifiers***



Residential Fans & Air Purifiers

Continental Fan Manufacturing Inc.
203 Eggert Road
Buffalo, New York 14215

Continental Fan Canada Inc.
12-205 Matheson Blvd E
Mississauga, Ontario L4Z 3E3

Continental Fan Manufacturing Inc.
6274 Executive Blvd.
Dayton, Ohio 45424

1-800-779-4021 • www.continentalfan.com

Distributed by:

Residential 15.10