

**SPECIFICATIONS**

**SOUTH BEACH™ TWO HANDLE LAVATORY FAUCET**

**Model**

SBH-MSL

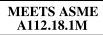
**Description**

- Ceramic disc cartridges
- Metal cross handles
- 1.5GPM (5.7L/min) maximum aerator @60 psi
- 1-hole installation
- Pop-up drain assembly

**Standards**



- UPC/cUPC
- NSF 61-9
- Energy policy act of 1992



- ASME A112.18.1M



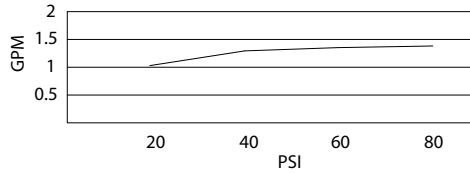
- Meets CA AB-1953

Less than 0.25% lead content

**Warranty**

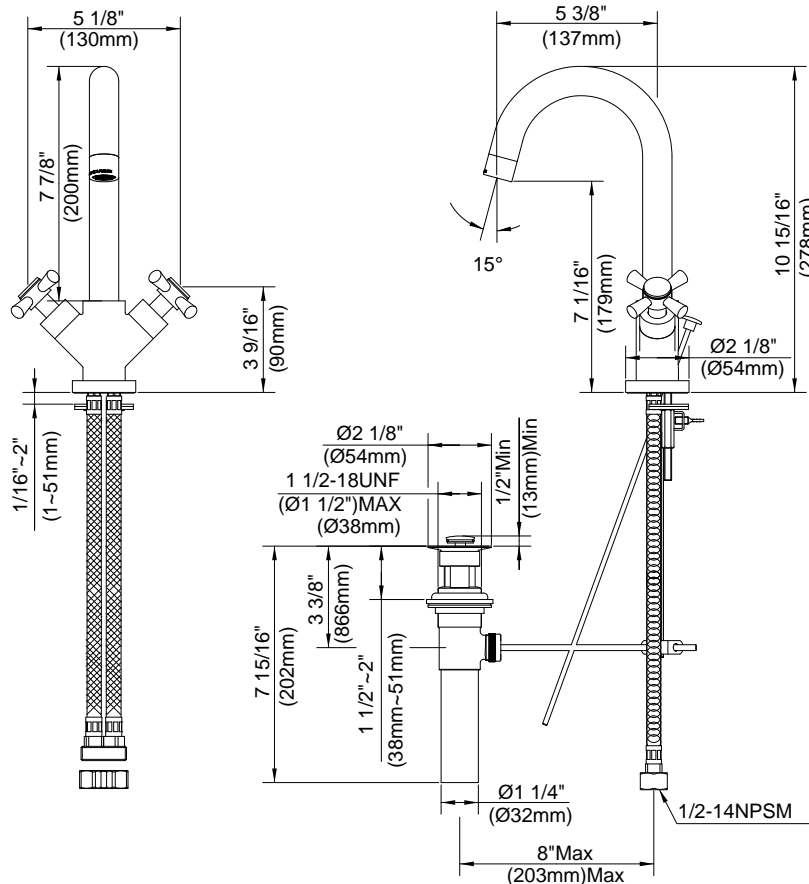
Danze products are covered by a manufacturer's limited "lifetime" warranty for manufacturing defects.

**Flow Rate**



**Finishes Available**

- Brushed Nickel
- Other: Refer to Price List for additional finish



**Submittal Information:**

Job Name: \_\_\_\_\_  
 Contractor: \_\_\_\_\_

Location: \_\_\_\_\_  
 Contact #: \_\_\_\_\_