

# Electronic Faucet - 591T Series 4" Cast Lavatory

**TECK®  
COMMERCIAL**



**Specification: (example)**

- 102mm (4") electronic faucet
- **CAST** one-piece Synergy® body with integral waterproof sensor and connector
- Polished chrome plated trim
- **Battery** (4 'C' cell) or **Hardwire** (24VAC) infrared electronic handwash
- H2OPTICS™ technology – no external adjustments required
- Adjustable sensing range and timeout
- Audible low battery indicator
- Serviceable filter screen upstream of the valve

- Metal hold-down package
- Tempered water supplied to solenoid valve, (except control box options No. 0 and 1)
- and... with... (specify battery or hardwire)
- with... (add outlet required)
- with... (add control box required)
- with... (add suffix **-HP** if required - See Back Page)
- with... (transformer - specify separately - See Back Page)



**591T1250**

**Engineer/Architect Approval**







Model Specified:

Approval:

Date:

DESCRIPTION	PRODUCT NO.				
<b>Hardwire</b>	<b>591T02</b>				For Chrome
	<b>591T02</b>			- SS	For Brilliance® Stainless Steel
<b>Battery Operated</b>	<b>591T12</b>				For Chrome
	<b>591T12</b>			- SS	For Brilliance® Stainless Steel
<b>Hardwire with Battery Backup</b>	<b>591T02</b>			- BB	For Chrome
	<b>591T02</b>			- SS - BB	For Brilliance® Stainless Steel



SPOUT & SENSOR		OUTLET		CONTROL BOX	
<b>0</b>	<input type="checkbox"/>	<b>0</b>	<input type="checkbox"/>	<b>0</b>	Base Model with Surface Mount Housing* SEE Specification Drawing #1 (2) <input type="checkbox"/>
<b>1</b>	<input type="checkbox"/>	<b>1</b>	<input type="checkbox"/>	<b>1</b>	For RECESSED MOUNTING Components ASSEMBLED in 10" Box w/S/S Cover.* SEE Specification Drawing #2 <input type="checkbox"/>
<b>2</b>	4" <b>CAST</b> Lavatory Spout  <input checked="" type="checkbox"/>	<b>2</b>	Vandal Resistant 1.5 USGPM (5.7 L/min.) Laminar w/Agion® Antimicrobial  <input type="checkbox"/>	<b>2</b>	<input type="checkbox"/>
<b>3</b>	<input type="checkbox"/>	<b>3</b>	Vandal Resistant 1.5 USGPM (5.7 L/min.) Flow Control Aerator  <input type="checkbox"/>	<b>3</b>	<input type="checkbox"/>
<b>4</b>	<input type="checkbox"/>	<b>4</b>	Standard 1.5 USGPM (5.7 L/min.) Flow Control Aerator  <input type="checkbox"/>	<b>4</b>	<input type="checkbox"/>
<b>5</b>	<input type="checkbox"/>	<b>5</b>	Vandal Resistant 0.5 USGPM (1.9 L/min.) Flow Control Non-Aerating Spray Outlet  <input type="checkbox"/>	<b>5</b>	<input type="checkbox"/>
<b>6</b>	<input type="checkbox"/>	<b>6</b>	Vandal Resistant 1.0 USGPM (3.8 L/min.) Flow Control Non-Aerating Spray Outlet  <input type="checkbox"/>	<b>6</b>	For RECESSED MOUNTING Components & Mechanical Mixing Valve (1) ASSEMBLED in 10" Box w/S/S Cover. SEE Specification Drawing #3 <input type="checkbox"/>
<b>7</b>	<input type="checkbox"/>	<b>7</b>	<input type="checkbox"/>	<b>7</b>	<input type="checkbox"/>
<b>8</b>	<input type="checkbox"/>	<b>8</b>	<input type="checkbox"/>	<b>8</b>	For RECESSED MOUNTING Components & Thermostatic Mixing Valve ASSEMBLED in 10" Box w/S/S Cover. SEE Specification Drawing #4 <input type="checkbox"/>
<b>9</b>	<input type="checkbox"/>	<b>9</b>	<input type="checkbox"/>	<b>9</b>	<input type="checkbox"/>

\* **Mixing Valve** supplied by others.

Flowrates are at 60 PSI.

(1) With Thermostatic Limit Stop. (2) Hydro Power\* available. Add suffix **-HP**.

Refer to [www.specselect.com](http://www.specselect.com) for individual models.

Note: Use this page front and back, with specification drawing page referenced above, as product submittal sheets.

Delta reserves the right (1) to make changes in specifications and materials, and (2) to change or discontinue models, both without notice or obligation. Dimensions are for reference only. See current full-line price book or [www.specselect.com](http://www.specselect.com) for finish options and product availability.

DSP-591T Rev. D



**TECK<sup>®</sup>**  
COMMERCIAL

# Electronic Faucet - 591T Series 4" Cast Lavatory

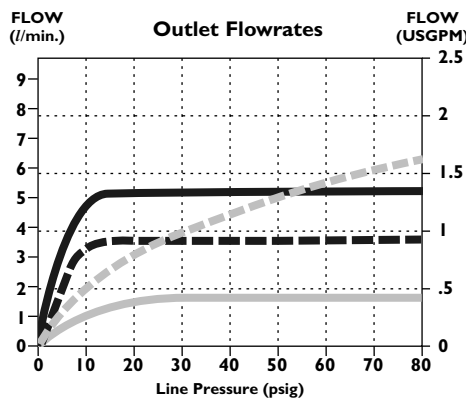
**Approvals:**

- CSA certified
- Complies to ASME A112.18.1
- ADA Compliant and meets Handicapped Accessibility Standard ASME A117.1 of less than 5 lbs. handle operating force.
- IAPMO listed
- Control Box Option 6 Mechanical Mixing Valve CSA certified
- Control Box Option 8 Thermostatic Mixing Valve CSA certified and meets ASSE 1016, 1017, 1070

(Contact Delta Representative for State and/or Local Approvals.)

U.S. Patent # 6, 826, 455

**FLOWRATE vs PRESSURE**



**Spout Outlets**

- No. 2 Laminar Flow Outlet
- No. 3 & 4 Aerator
- - - No. 5 Low Flow Outlet
- · - No. 6 Flow Control Outlet

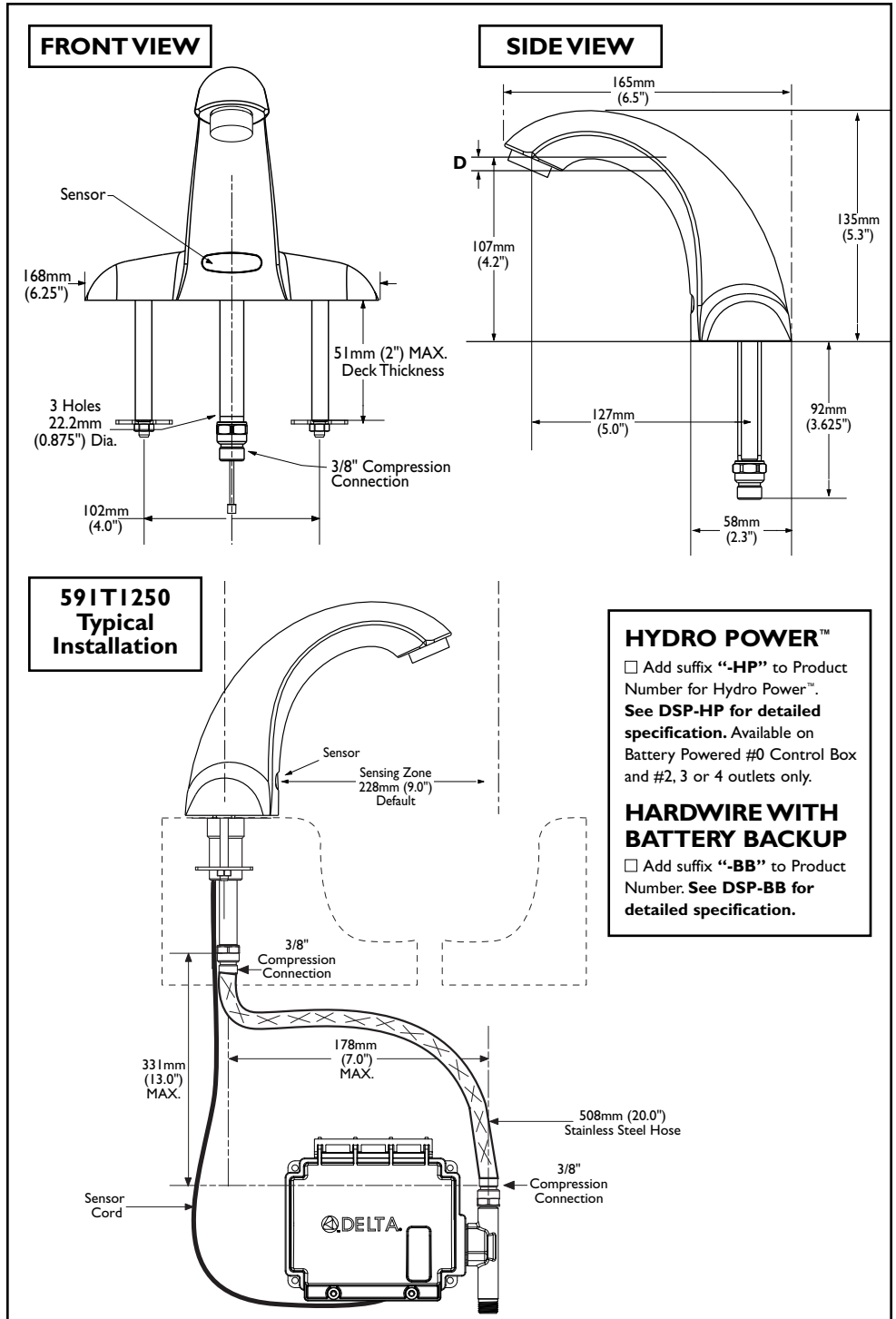
CAST SPOUT OUTLET NO.	"D"	
	mm	in.
2	11	0.45
3	11	0.45
4	11	0.45
5	11	0.45
6	11	0.45

**OPERATION:**

- Hands free (touchless) operation.
- Water flows when sensor is activated.
- Water flow stops upon de-activation of sensor.
- Auto shut-off feature that is selectable between 15 to 75 seconds. Factory set to 45 seconds. Will reset once obstruction is removed.
- Adjustable sensing distance 76 to 381 mm (3" to 15") factory set to 229mm (9") (+/- 1.0")
- Low battery audible beep (for battery models only). Will activate after faucet shuts off when approximately 1500 cycles remain.

**NOTE: For optimum performance of this product, we recommend a system pressure between 20 and 80 PSI static. This product will operate up to a maximum of 125 PSI static per ANSI and CSA requirements. However, we do not recommend pressures above 80 PSI. Thermal expansion or leaking pressure reducing valves may require use of expansion tanks or relief valves to ensure your system never exceeds its maximum intended pressure setting.**

Note: Measurements may vary ± 6mm (0.25")



**HYDRO POWER™**

Add suffix "-HP" to Product Number for Hydro Power™. See DSP-HP for detailed specification. Available on Battery Powered #0 Control Box and #2, 3 or 4 outlets only.

**HARDWIRE WITH BATTERY BACKUP**

Add suffix "-BB" to Product Number. See DSP-BB for detailed specification.

**591T ELECTRONIC FAUCET OPTIONAL ACCESSORIES:**

TRANSFORMERS:	
✓	060704A 110 to 24VAC Class II 20VA (Up to 5 Electronic Valves)
	060771A 110 to 24VAC Class II 40VA (Up to 10 Electronic Valves)
	060772A 110 to 24VAC Class II 100VA (Up to 25 Electronic Valves)
CORDS:	
✓	060690A 36" Cable Extension

Refer to www.specselect.com for individual models. Product supplied as shown by solid lines. All items shown by dotted lines supplied by others.

## BASE MODEL – SURFACE MOUNT

### 591T SERIES

✓	PRODUCT NO.				VALVE TYPE	COVER
	591T	0	2	0	Deckmount Cast Lavatory Hardwire	Surface Mounted
	591T	1	2	0	Deckmount Cast Lavatory Battery	Surface Mounted

### 591T SERIES

Battery Operated box shown.

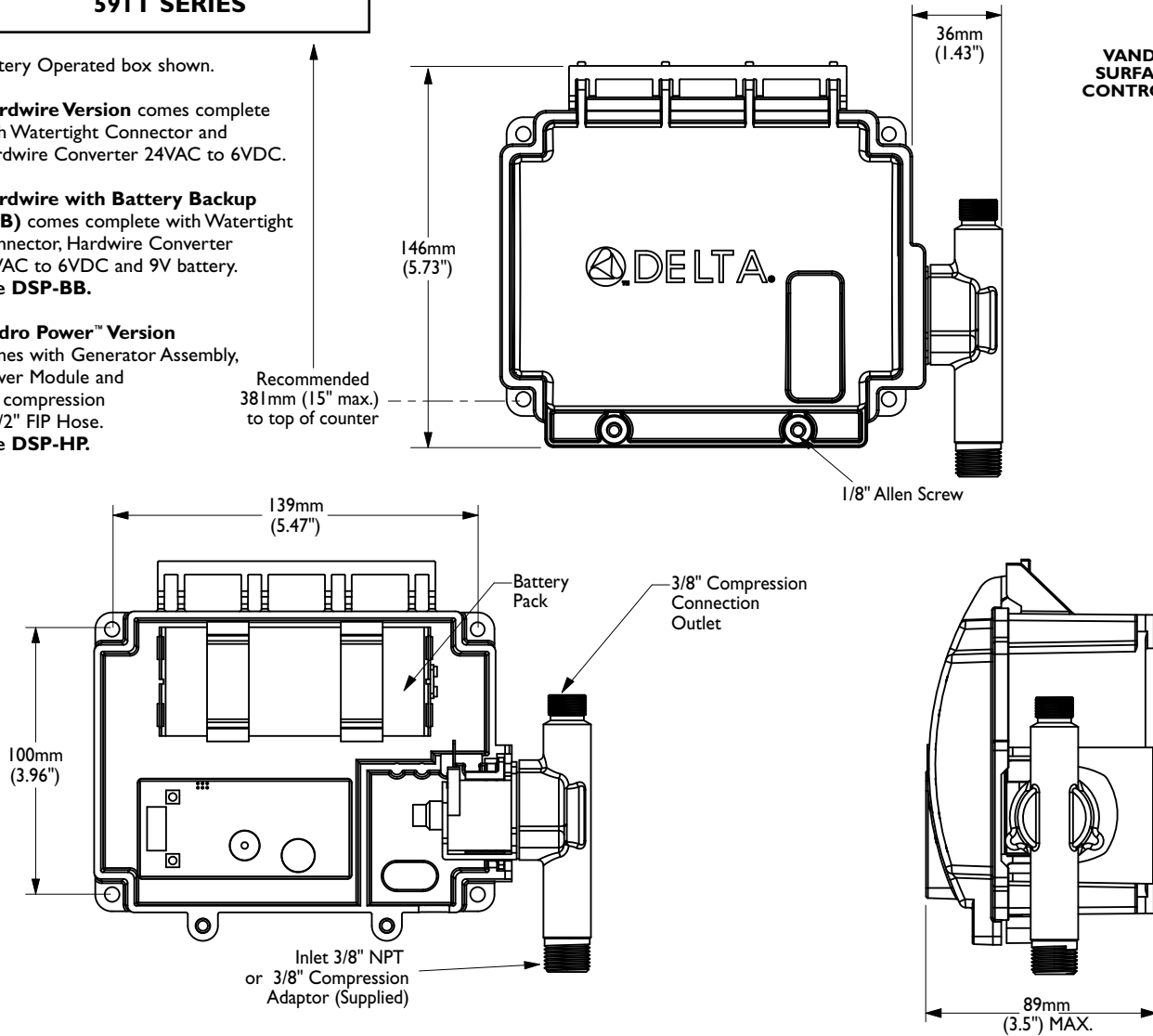
**Hardwire Version** comes complete with Watertight Connector and Hardwire Converter 24VAC to 6VDC.

**Hardwire with Battery Backup (-BB)** comes complete with Watertight Connector, Hardwire Converter 24VAC to 6VDC and 9V battery. See DSP-BB.

**Hydro Power™ Version** comes with Generator Assembly, Power Module and 3/8" compression x 1/2" FIP Hose. See DSP-HP.

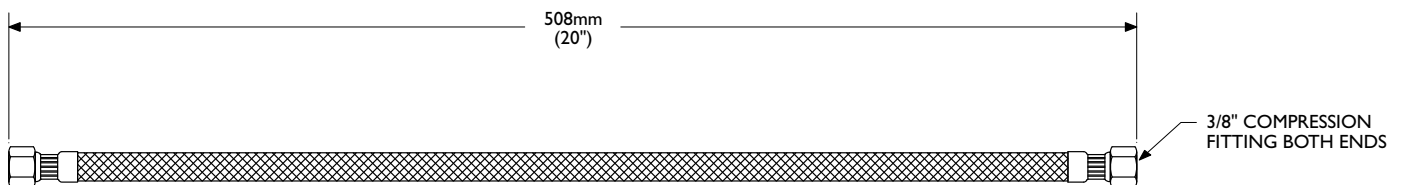
Recommended 381mm (15" max.) to top of counter

**VANDAL PROOF SURFACE MOUNT CONTROL HOUSING**



Note: Stainless Steel hose connection supplied between Solenoid Valve and Spout

S/S HOSE



Note: Measurements may vary  $\pm 6\text{mm}$  (0.25")

**TEMPERED WATER - ASSEMBLED CONTROL BOX**
**591T SERIES**

✓	PRODUCT NO.					FAUCET TYPE	MOUNT TYPE	COVER	
	*591T	0	2		I	Deckmount Cast Lavatory Hardwire	Recessed Mount	305mm (12")	Stainless Steel
	*591T	I	2		I	Deckmount Cast Lavatory Battery	Recessed Mount	305mm (12")	Stainless Steel
*This product is supplied with Flexible Sensor Cord Conduit on Recessed Mount Installations.									

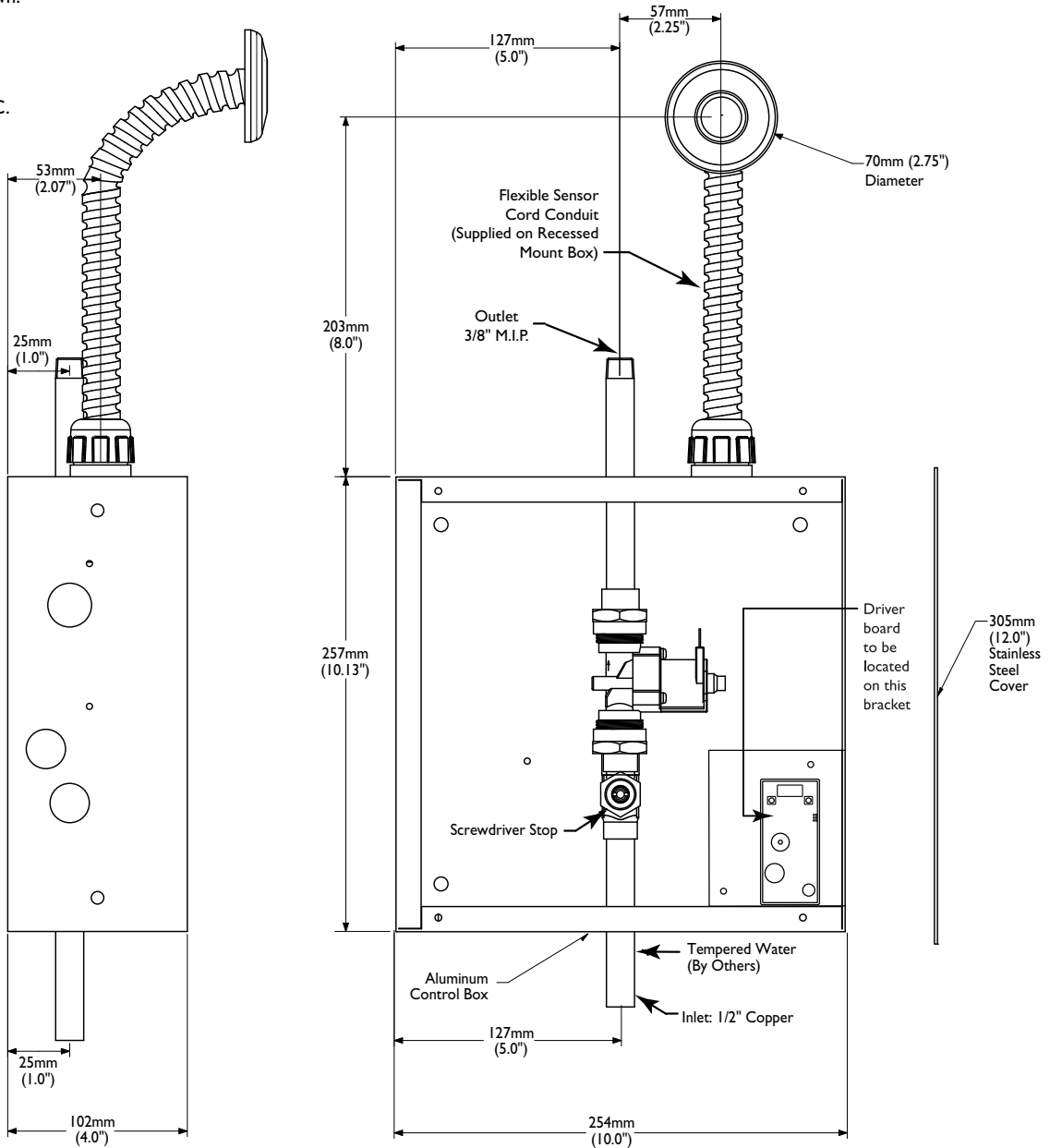
**591T SERIES**

Battery Operated box shown.

**Hardwire Version** comes complete with Watertight Connector and Hardwire Converter 24VAC to 6VDC.

**Hardwire with Battery Backup (-BB)** comes complete with Watertight Connector, Hardwire Converter 24VAC to 6VDC and 9V battery. See **DSP-BB**.

Connection from box to spout by others.



Note: Measurements may vary ± 6mm (0.25")

## MECHANICAL MIXING VALVE ASSEMBLED CONTROL BOX

### 591T SERIES

✓	PRODUCT NO.					FAUCET TYPE	MOUNT TYPE	COVER	
	*591T	0	2		6	Deckmount Handwash Hardwire	Recessed Mount	305mm (12")	Stainless Steel
	*591T	1	2		6	Deckmount Handwash Battery	Recessed Mount	305mm (12")	Stainless Steel
*This product is supplied with Flexible Sensor Cord Conduit on Recessed Mount Installations.									

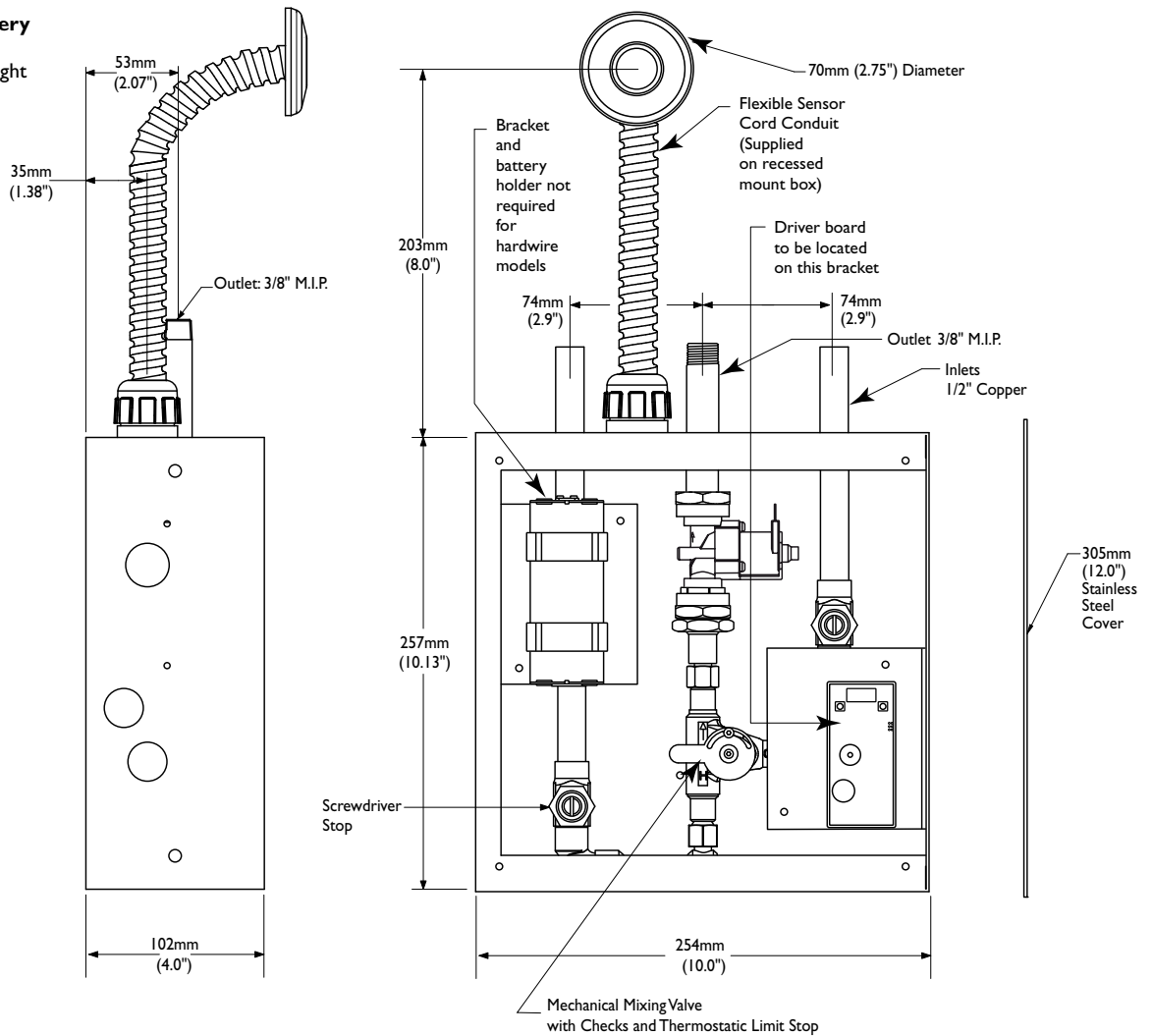
### 591T SERIES

Battery Operated box shown.

**Hardwire Version** comes complete with Watertight Connector and Hardwire Converter 24VAC to 6VDC.

**Hardwire with Battery Backup (-BB)** comes complete with Watertight Connector, Hardwire Converter 24VAC to 6VDC and 9V battery. See **DSP-BB**.

Connection from box to spout by others.



Note: Measurements may vary  $\pm 6\text{mm}$  (0.25")

**THERMOSTATIC MIXING VALVE ASSEMBLED CONTROL BOX**
**591T SERIES**

✓	PRODUCT NO.					FAUCET TYPE	MOUNT TYPE	COVER	
	*591T	0	2		8	Deckmount Handwash Hardwire	Recessed Mount	305mm (12")	Stainless Steel
	*591T	1	2		8	Deckmount Handwash Battery	Recessed Mount	305mm (12")	Stainless Steel
*This product is supplied with Flexible Sensor Cord Conduit on Recessed Mount Installations.									

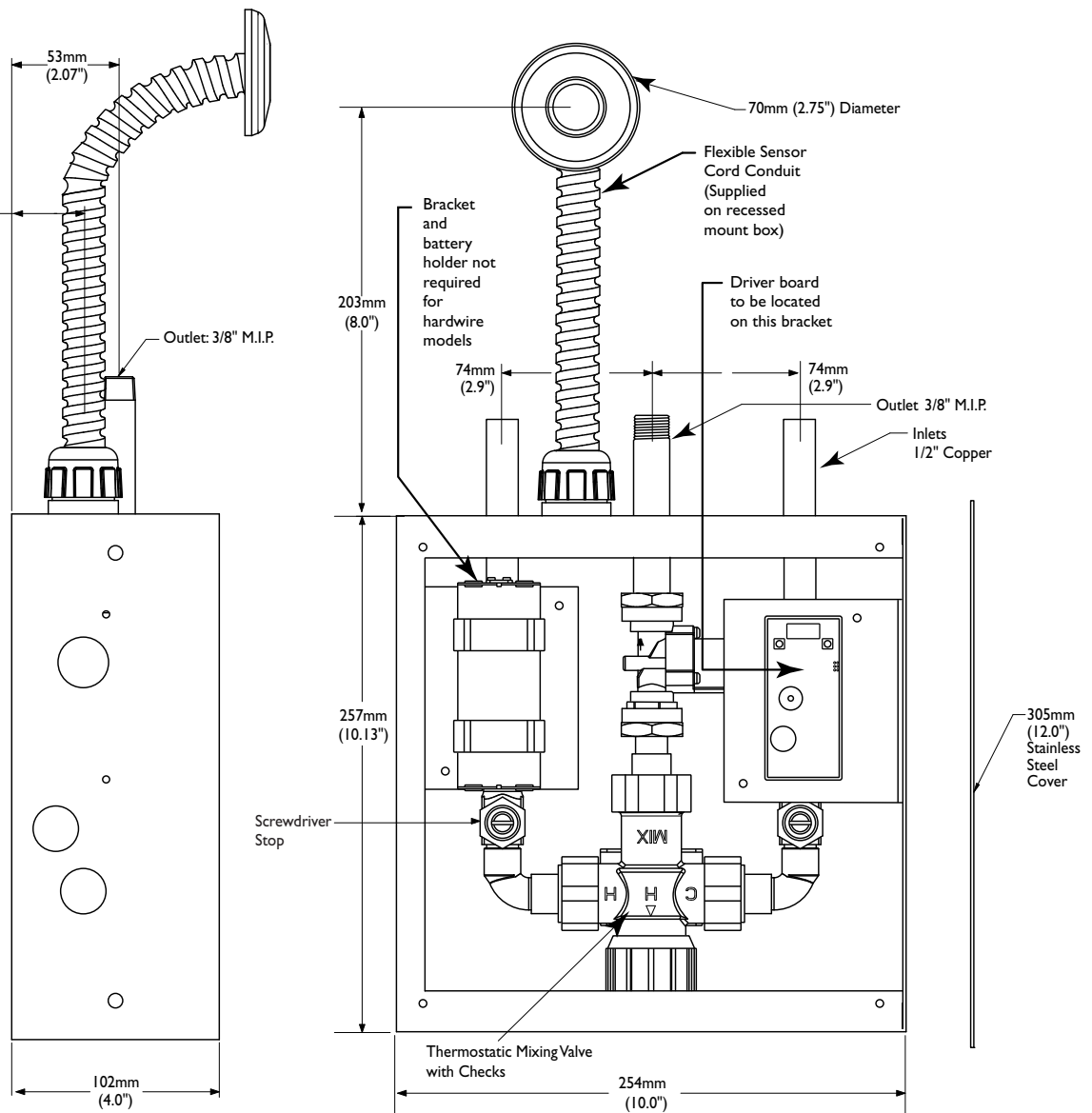
**591T SERIES**

Battery Operated box shown.

**Hardwire Version** comes complete with Watertight Connector and Hardwire Converter 24VAC to 6VDC.

**Hardwire with Battery Backup (-BB)** comes complete with Watertight Connector, Hardwire Converter 24VAC to 6VDC and 9V battery. See DSP-BB.

Connection from box to spout by others.



Note: Measurements may vary ± 6mm (0.25")