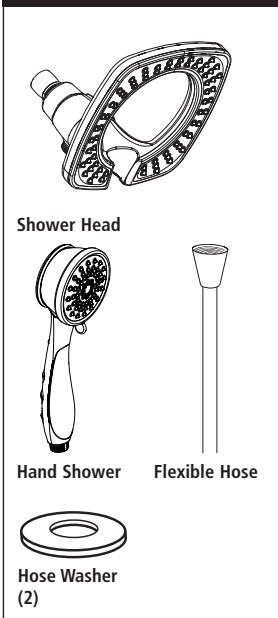


Parts Included



Cleaning of Parts

Only clean with a mild non-abrasive detergent and soft cloth.

Note: Any other cleaning product not specifically designed for cleaning plastic or metal surfaces may damage the finish.

Limited Lifetime Warranty

Delta Faucet warrants to the owner of this product that it is free from defects in materials or workmanship as listed above from the date of purchase. For service either return it to the location where purchased or return the product postage prepaid (we recommend United Parcel Service) to Alsons Corporation, 3010 W. Mechanic Street, Hillsdale, Mich. 49242 for repair or replacement at our discretion at no charge. This warranty gives you specific legal rights. You may also have other rights that vary where you reside. For assistance or problems with installation: In the U.S.A. call Toll Free: 1-888-775-3699, 8:00 a.m. to 6:00 p.m. Eastern Standard Time

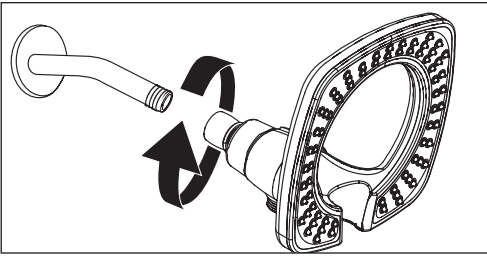
Vacuum Breaker Permanently Installed in Hose: Your hand shower is equipped with a Vacuum Breaker, permanently installed in the end of the hose that has a **ribbed nut**. **Hand tighten** the ribbed nut to the Shower Head.

Do not use a wrench or pliers. *If you attach the ribbed nut to the hand shower, the Vacuum Breaker will not function.*

Note: A Vacuum Breaker is a device that is required by certain code authorities to protect your community's water supply from the back-flow of water. The Vacuum Breaker usually discharges a small amount of water each time you turn on your shower. It may also drain water when you shut it off. Both are normal conditions - the water is draining, not leaking.

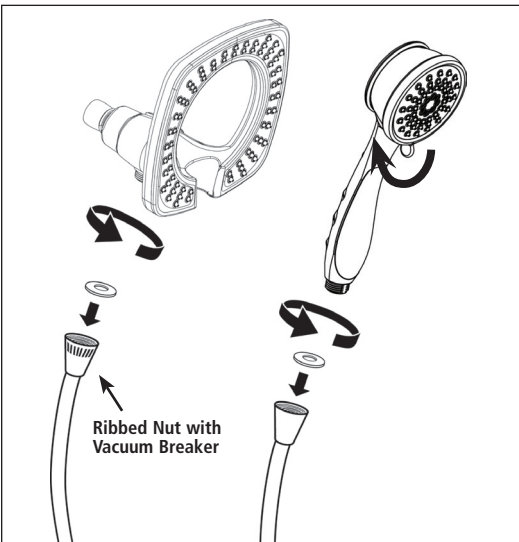
DO NOT TRY TO TIGHTEN OR REMOVE THE VACUUM BREAKER which is permanently installed into the hose. This could cause damage to the hose.

1. Install the Shower Head

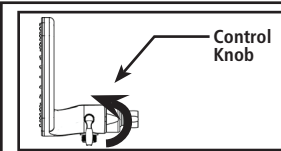


- Make sure to turn off water supply before installing the Shower Head.
- Remove existing Shower Head from Shower Arm.
- Apply Teflon tape to Shower Arm, if necessary, to ensure leak free connection.
- Hand tighten the Ball Connector of the Shower Head to the Shower Arm.

2. Install Hand Shower



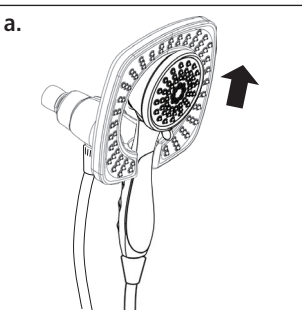
- Place the hose washers into the hose nuts on each end of the hose.
- Remove the yellow tape and connect the ribbed end of the Flexible Hose to the Shower Head. Connect the other end of the Flexible Hose to the Hand Shower. All connections should be able to be made by hand tightening.
- To change spray modes, turn the lever (located on the front of the Hand Shower) left or right to the desired setting. See below.



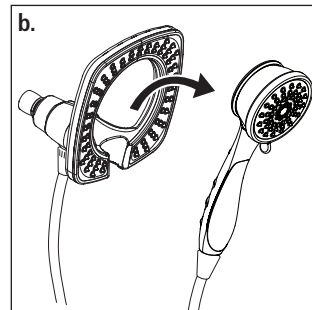
2a. Changing Modes on Shower Head

- Turn knob on side of Shower Head to change between:
 - Shower Head only
 - Shower Head and Hand Shower
 - Hand Shower only

4. Removing the Hand Shower from the Shower Head



- Push the lower part of the Hand Shower upwards, away from the Shower Head, releasing it from the Shower Head base



- Pull the Hand Shower away from the slot in the Shower Head.

***WARNING:** Plumbing Codes require that shower heads and hand showers provide a small but continuous flow of water (trickle) when in "PAUSE" mode. Because of this continuous flow, in certain circumstances pressure variations in the water line and/or changes in the position of the shower temperature control handle while in "PAUSE" mode could result in dramatic changes to the temperature of the water when the shower head or hand shower is returned to the "ON" position.

ALWAYS point the shower head away from yourself when returning to the "ON" position and feel the water with your hand before resuming your shower to ensure the water flow is not too hot or too cold. DO NOT allow children or others who might not understand this warning to use the "PAUSE" function.