

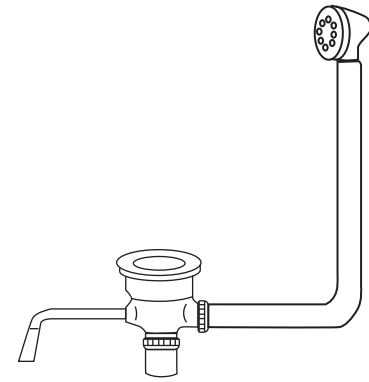
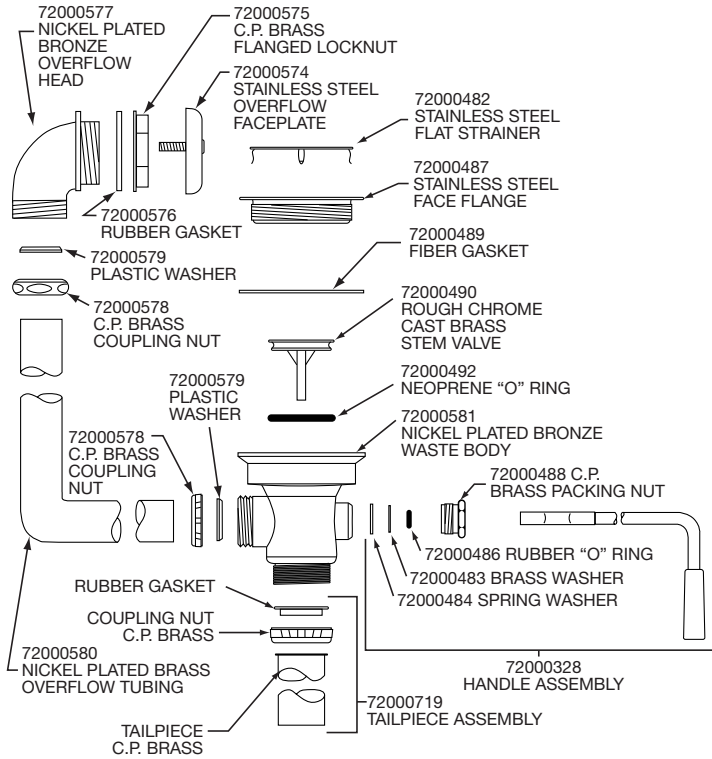
# Drain Fitting with Lever Handle and Overflow, 1-1/2" Tailpiece Model LK86RT

# ELKAY®

## SPECIFICATIONS

### GENERAL

**LK86RT** Rotary lever operated drain outlet fitting for 3-1/2" (89mm) opening, 4-1/8" (105mm) O.D. top flange. 1-1/4" (32mm) O.D. chrome plated overflow with stainless steel overflow faceplate. Nickel plated bronze waste body with stainless steel face flange and perforated grid. Chrome plated brass 1-1/2" (38mm) x 4" (102mm) tailpiece and stainless steel lever arm. Ship. Wt. 6 lbs.



Model LK86RT

