

## SINK DESCRIPTION

- Manufactured of 20 gauge, type 301 nickel-bearing stainless steel
- Large bowl is 14" x 16" x 7-1/4", smaller bowl is 7-1/2" x 16" x 5"
- The sink ledge has four fixture mounting holes, 1-1/2" in diameter located 4" on center
- Has two 3-1/2" diameter recessed drain openings
- Is fully undercoated with a sound and temperature insulating material
- The exposed surfaces are polished to a lustrous satin tone finish
- Includes all necessary mounting hardware

## CUT OUT DIMENSIONS

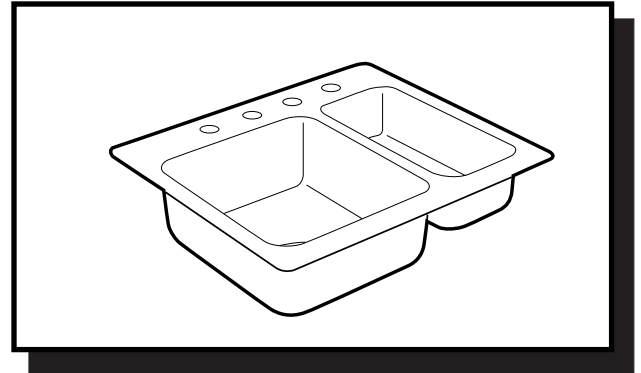
- Cut out dimensions are 24-3/4" x 21-1/2", with a 3/4" corner radius. A tolerance of plus or minus 1/16" is acceptable

## STANDARDS

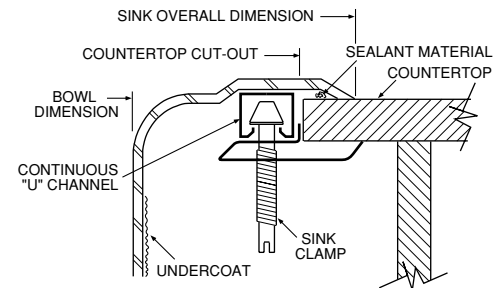
- Third party certified by IAPMO to meet ASME A112.19.3 and all applicable specifications referenced therein.

## WARRANTY

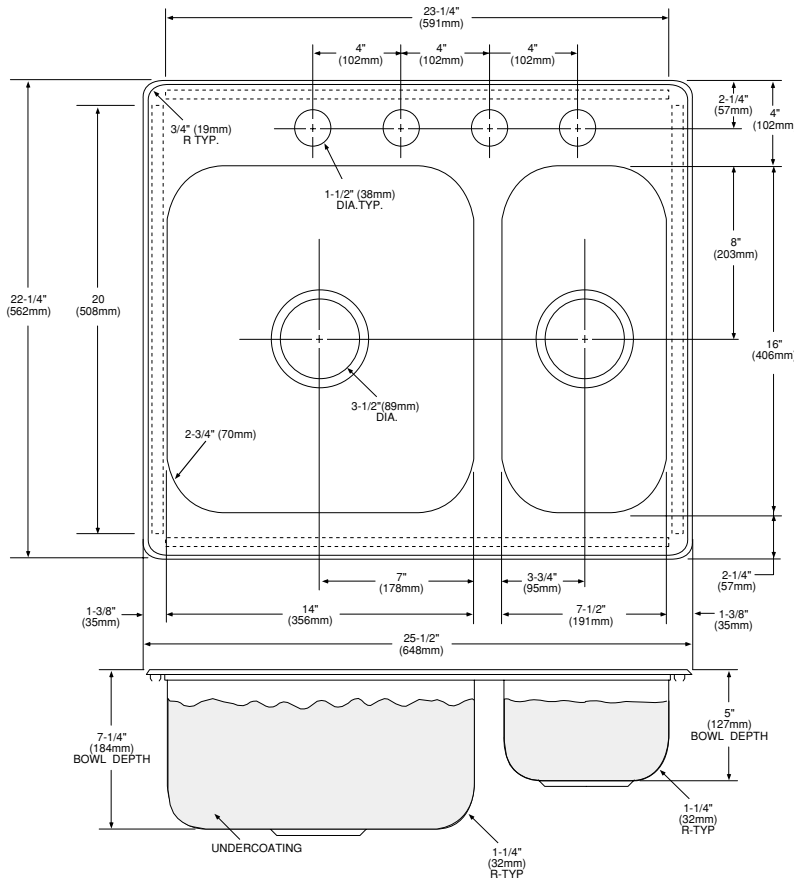
- Warranted for ten years against material or manufacturing defects



**Camelot®  
Double Bowl Bar Sink  
Model: 22238  
(KSR-2522-4)**



**Installation Detail**



## CRITICAL DIMENSIONS

(DO NOT SCALE)