



Buy it for looks. Buy it for life.®

Specifications

FAUCET DESCRIPTION

- Metal construction with various finishes identified by suffix
- Pullout spray with 59" braided hose
- Flexible supplies with 3/8" compression fittings
- Chrome liquid dispenser included with 87315CSD

OPERATION

- Lever style handle
- Temperature controlled by 180° arc of handle travel
- Spout rotation is 145°
- Operates with less than 5lbs. of force
- Operates in stream or spray mode in the pullout or retracted position
- Built-in vacuum breaker

FLOW

- Aerator is limited to 2.2 gpm (8.3 L/min) at 60 psi

CARTRIDGE

- 1255™ Duralast™ cartridge
- Engineered polymers, nonferrous and stainless steel materials

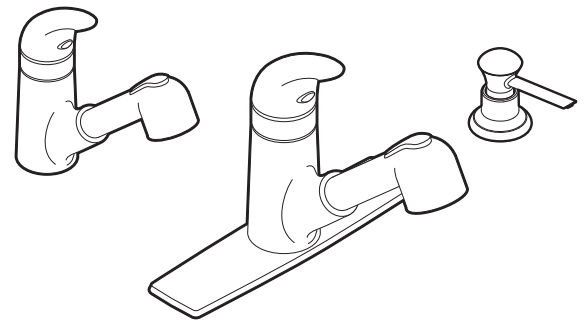
STANDARDS

- Contains no more than 0.25% weighted average lead content
- Complies with California Proposition 65 and with the Federal Safe Drinking Water Act
- Third party certified to meet CSA B125.1, ASME A112.18.1 and all applicable requirements referenced therein including NSF61/9

- **ADA**  for lever handle

WARRANTY

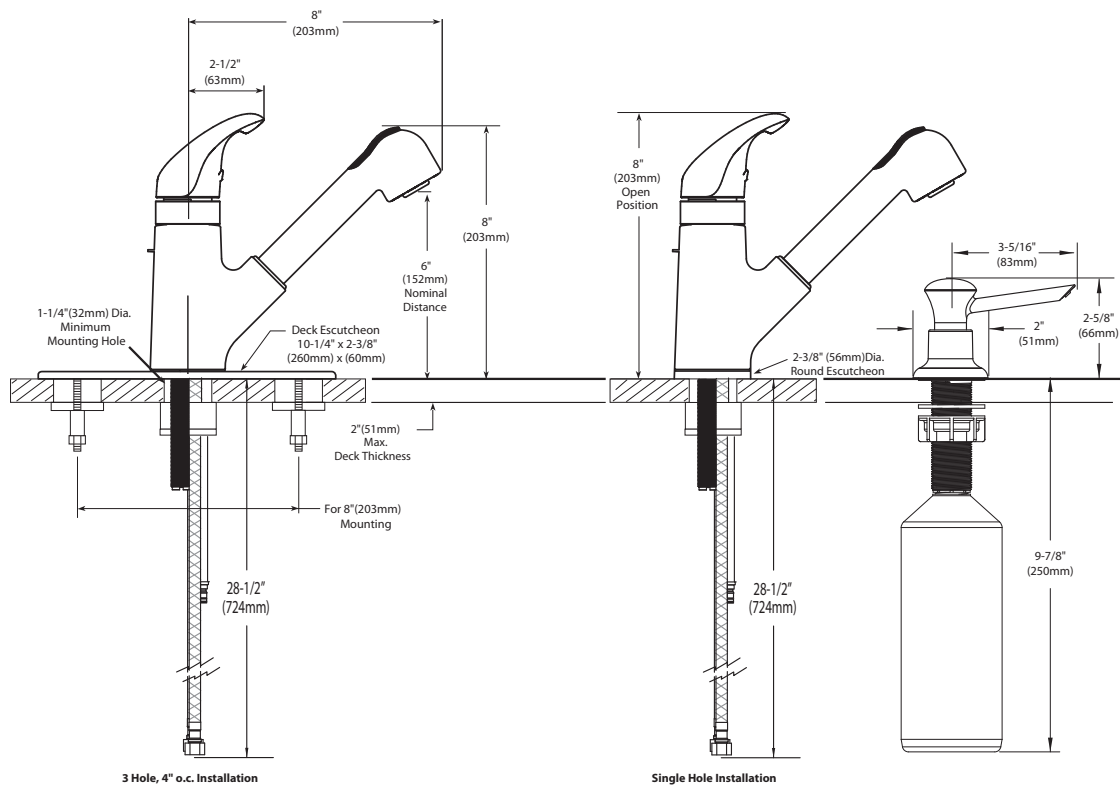
- Lifetime limited warranty against leaks, drips and finish defects to the original consumer purchaser
- 5 year warranty if used in commercial installations



Integra™ Single Control Kitchen Pullout Faucet

Models: CA87315 series

NOTE: DESIGNED TO INSTALL
THRU 1 OR 3 HOLES 1-1/2" (38mm) DIA.



CRITICAL DIMENSIONS

(DO NOT SCALE)