

## Vivian™ Deck-Mount Tub Filler Trim with Cross Handles

### FEATURES

---

- Cross handles
- Solid brass construction
- Accommodates 8"-16" spread
- Ceramic disk valve cartridge
- For use with the Deck-Mount Tub Filler Valve (TBMT)

### COLORS/FINISHES

---

- #CP Polished Chrome
- #BN Brushed Nickel
- #PN Polished Nickel



### CODES/STANDARDS

---

- Meets or exceeds ASME A112.18.1/CSA B125.1
- Certifications: IAPMO(cUPC), State of Massachusetts and others
- Code Compliance: UPC, IPC, NSPC, NPC Canada, and others



### PRODUCT SPECIFICATION

---

Deck-mount tub filler trim shall have cross handles. Product shall have a solid brass construction. Product shall accommodate 8"-16" spread. Product shall be TOTO Model TB220DD#\_\_\_\_\_ and required deck-mount tub filler valve shall be TBMT sold separately.

# TB220DD

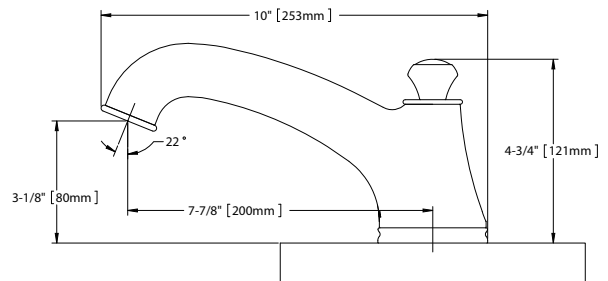
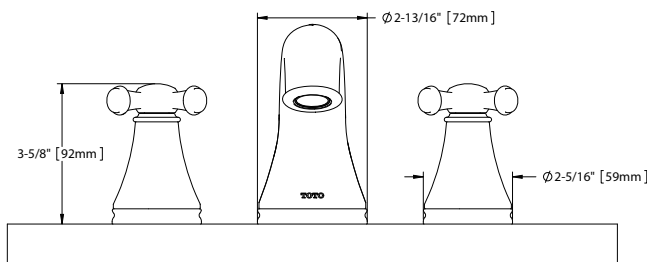
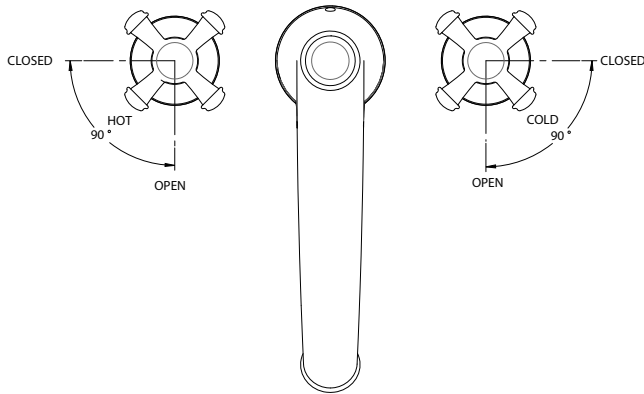
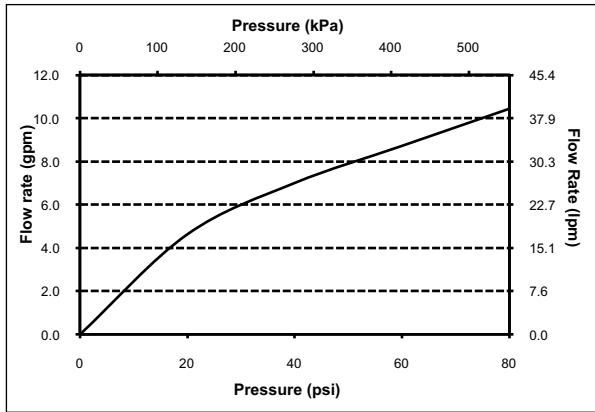
## Vivian™ Deck-Mount Tub Filler Trim with Cross Handles

### SPECIFICATIONS

- Warranty: Lifetime Limited Warranty (Residential Use)  
One Year (Commercial Use)
- Material: Brass
- Shipping Weight: 6.3 lbs.
- Shipping Dimensions: 11-1/2" L x 8-3/8" W x 5-7/8" H

### INSTALLATION NOTES

**VALVE REQUIRED:**  
Deck-mount tub filler valve TBMT sold separately.



**TOTO®**

*These dimensions and specifications are subject to change without notice*