



26790 Madison Ave.  
Murrieta, CA 92562  
888-304-0660

www.waterstoneco.com

ITEM NO:

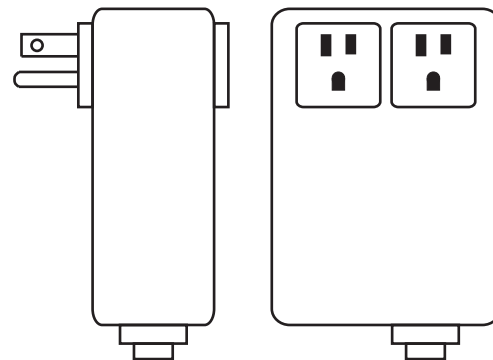
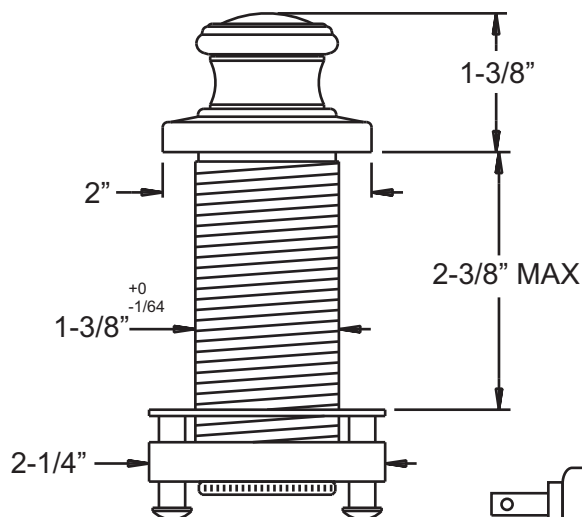
4010

STYLE: TRADITIONAL

INTENDED USE:  
DISPOSER AIR-SWITCH

CUSTOMER NAME:

JOB NO:



**Connection Box:**  
4-1/4"H x 3"W x 2"D  
120v 15Amp 1Hp  
Tubing included.

#### Technical Specifications:

- Above the deck design provides:
  - Easy operation.
  - Eliminates broken fingernails.
- Solid brass construction, Button and Trim Ring available in solid Stainless Steel.
- Easily replaceable air pump.
- Simplifies first time disposer installations.
- Isolated from electrical connections.
- Requires 1-3/8" mounting hole.

#### Connection Box:

- On/Off safety air switch.
- Pressing air switch will alternately activate or deactivate two pieces of equipment plugged into the box.

#### Codes/Standards Applicable

Connection Box complies with the following:

- UL
- CSA Enclosure Type 2

DATE: 1-04-10

DIMENSIONS MAY VARY AND ARE SUBJECT TO CHANGE. NO RESPONSIBILITY IS ASSUMED FOR USE OF SUPERCEDED OR VOIDED DATA.