



GLENWALL™ PRESSURE-ASSISTED WALL-MOUNTED TOILET

VITREOUS CHINA

BARRIER FREE

GLENWALL™ PRESSURE-ASSISTED TOILET

- 2093.100**
 - Vitreous china
 - Low-consumption (6.0 Lpf/1.6 gpf)
 - Wall-mounted, back-outlet toilet
 - Elongated bowl
 - Fully-glazed 2" ballpass trapway
 - 10" x 12" water surface area
 - Pressure-assisted siphon jet action
 - Side-mounted chrome trip lever
 - Close-coupled flushometer tank*
 - Speed Connect® tank/bowl coupling system
 - Sanitary bar on bowl

- 3402.016** Elongated bowl
- 4098.100** Tank complete with coupling components



Nominal Dimensions:

749 x 495 x 762 mm
(29-1/2" x 19-1/2" x 30")

Fixture only, seat and supply by others

Required working pressure range 25 psi - 80 psi

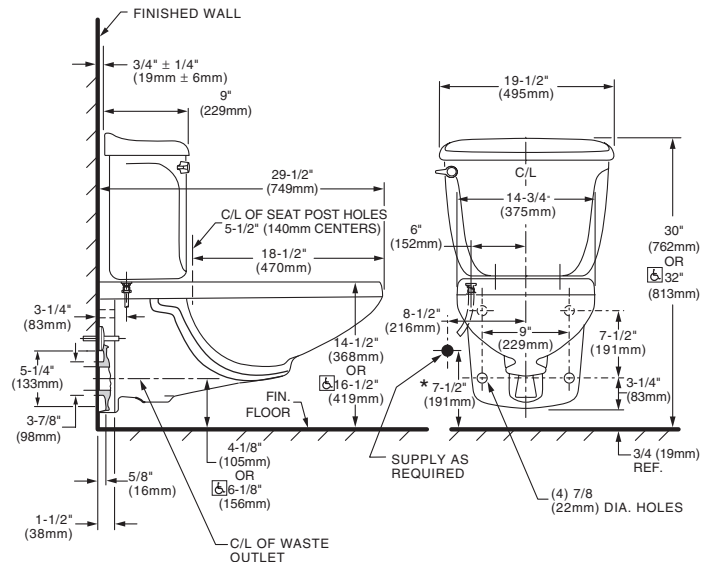
Alternate Configurations Available:

- 4098.700** Tank and tank cover only with tank cover locking device
- 4098.800** Tank and tank cover only with right hand trip lever

Compliance Certifications -

Meets or Exceeds the Following Specifications:

- ASME A112.19.2 for Vitreous China Fixtures



NOTES:

WASTE OUTLET SEAL RING MUST BE NEOPRENE OR GRAPHITE-FELT (WAX RING NOT RECOMMENDED)

SUGGEST 1/16" CLEARANCE BETWEEN FACE AT WALL AND BACK OF BOWL. CARRIER FITTING AS REQUIRED TO BE FIGURED AND FURNISHED BY OTHERS.

PROVIDE SUITABLE REINFORCEMENT FOR ALL SUPPORTS. SUPPLY NOT INCLUDED WITH FIXTURE AND MUST BE ORDERED SEPARATELY.

* DIMENSION SHOWN FOR LOCATION OF SUPPLY IS SUGGESTED. FOR ADDITIONAL INFORMATION REFER TO INSTALLATION INSTRUCTIONS SUPPLIED.

IMPORTANT: Dimensions of fixtures are nominal and may vary within the range of tolerances established by ANSI Standard A112.19.2. These measurements are subject to change or cancellation. No responsibility is assumed for use of superseded or voided pages.

To Be Specified:

- Color: White Bone Linen
- Seat: American Standard #5324.019 "Rise and Shine" (with easy to clean lift-off hinge system) solid plastic closed front seat with cover.
- Seat: American Standard #5311.012 "Laurel" molded closed front seat with cover.
- Alternate Seat:
- Supply with Stop:

* Flushmate III tank system by Flushmate® Div. of Sloan Valve Co



When installed so top of seat is 432 to 483mm (17" to 19") from the finished floor.
MEETS THE AMERICANS WITH DISABILITIES ACT GUIDELINES AND ANSI A117.1 REQUIREMENTS FOR ACCESSIBLE AND USEABLE BUILDING FACILITIES-CHECK LOCAL CODES.

COMMERCIAL TOILET SEATS

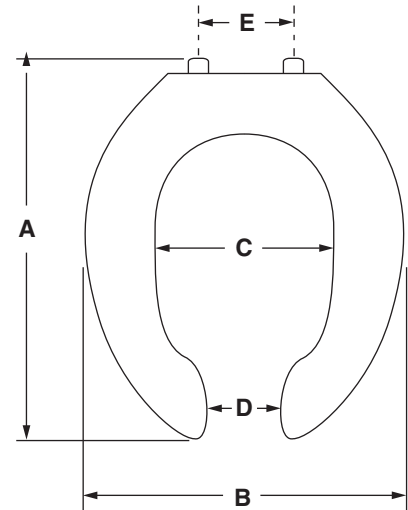
- 5901.100** Elongated Heavy Duty bowl open front seat less cover
- 5901.100SS** Same as 5901.100 with self-sustaining hinge
- 5901.110T** Same as 5901.100 with EverClean® Surface
- 5901.110T5** Master Pack of 5 - 5901.110T seats individually boxed and labeled for easy sell through

- Open front toilet seat less cover
- Injection molded solid polypropylene
- Fits elongated bowl
- Features large molded-in bumpers
- External check hinge with 304 Series stainless steel hinge posts stops seat 11° beyond vertical
- EverClean® silver-based surface permanently inhibits the growth of stain and odor causing bacteria, mold and mildew on the surface. EverClean® surface does not protect against disease causing bacteria.



5901

Model #	5901
A	18-9/16" (471mm)
B	14-3/8" (365mm)
C	7-7/8" (200mm)
D	3-1/2" (89mm)
E	5-1/2" (140mm)
Ring Thickness	7/8" (22mm)
Ring Thickness with Bumper	1" (25mm)



To Be Specified:

- Color: White