

4

3

2

1

D

D

C

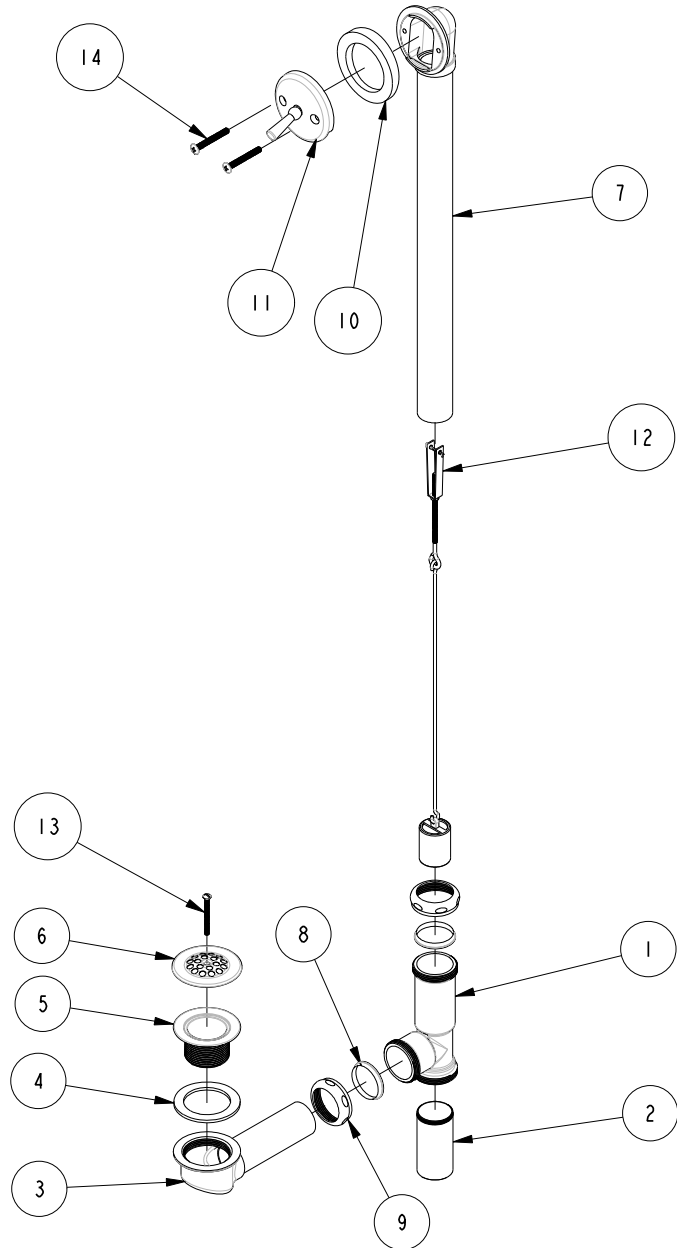
C

B

B

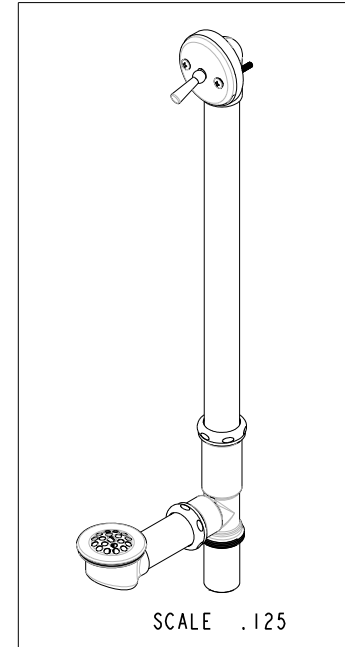
A

A



### BILL OF MATERIAL (CURRENT LEVEL)

ITEM	PT/ASSY	DESCRIPTION	TYPE	QTY.
1	DRAIN-JOINT-PIPE	DRAIN JOINT PIPE	PART	1
2	PIPE_SMALL	BOTTOM PIPE	PART	1
3	STRAINER-ELBOW	STRAINER ELBOW	PART	1
4	STRAINER-WASHER	STRAINER WASHER	PART	1
5	STRAINER-BODY	STRAINER BODY	PART	1
6	STRAINER	STRAINER	PART	1
7	TRIP-LEVER-ELBOW	TRIP LEVER ELBOW	PART	1
8	NYLON-WASHER	NYLON WASHER	PART	2
9	SLIP-JOINT-NUT	SLIP JOINT NUT	PART	2
10	BUSHING	WASHER	PART	1
11	LEVER-ASSEMBLY	LEVER ASSEMBLY	ASSEMBLY	1
12	LINK-ASSY	LINK ASSEMBLY	ASSEMBLY	1
13	STRAINER_SCREW	STRAINER SCREW	PART	1
14	LEVER_SCREW	LEVER SCREW	PART	2



COPYRIGHT 2005 BRASSTECH, INC. THESE DRAWINGS AND THE DESIGNS DEPICTED HEREIN ARE THE PROPRIETARY PROPERTY OF BRASSTECH. ANY USE OR REPRODUCTION IS SUBJECT TO THE EXPRESS APPROVAL OF BRASSTECH. UNAUTHORIZED USE IS STRICTLY PROHIBITED. ALL RIGHTS RESERVED.

**BRASSTECH**  
 INCORPORATED  
 2001 E. CARNEGIE AVE.  
 SANTA ANA, CA 92705  
 (949) 417-5207

## TRIP LEVER ASSEMBLY

ASSY. NO.	253	-	-	-
SCALE .125	REF. -	SHEET 1 OF 2	REV	REV DESC
				DATE
				02/03/11

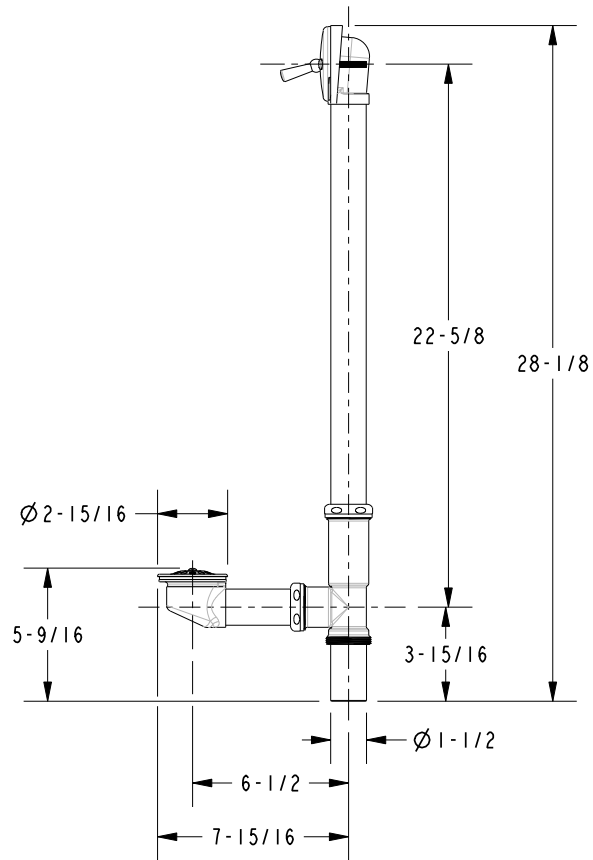
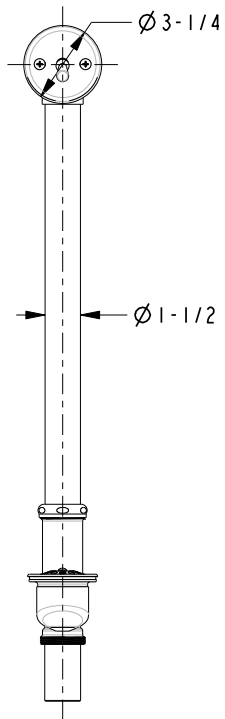
4

3

2

1

**SPECIFICATION DWG**



DIMENSIONS ARE IN INCHES AND AN APPROXIMATION OF A TYPICAL INSTALLATION

COPYRIGHT 2005 BRASSTECH, INC. THESE DRAWINGS AND THE DESIGNS DEPICTED HEREIN ARE THE PROPRIETARY PROPERTY OF BRASSTECH. ANY USE OR REPRODUCTION IS SUBJECT TO THE EXPRESS APPROVAL OF BRASSTECH. UNAUTHORIZED USE IS STRICTLY PROHIBITED. ALL RIGHTS RESERVED.

<b>BRASSTECH</b>		2001 CARNEGIE AVE. SANTA ANA, CA 92705 (949) 417-5207	
DWG NO.	253	REV	-
SCALE	.125	REF.	-
		SHEET	2 OF 2