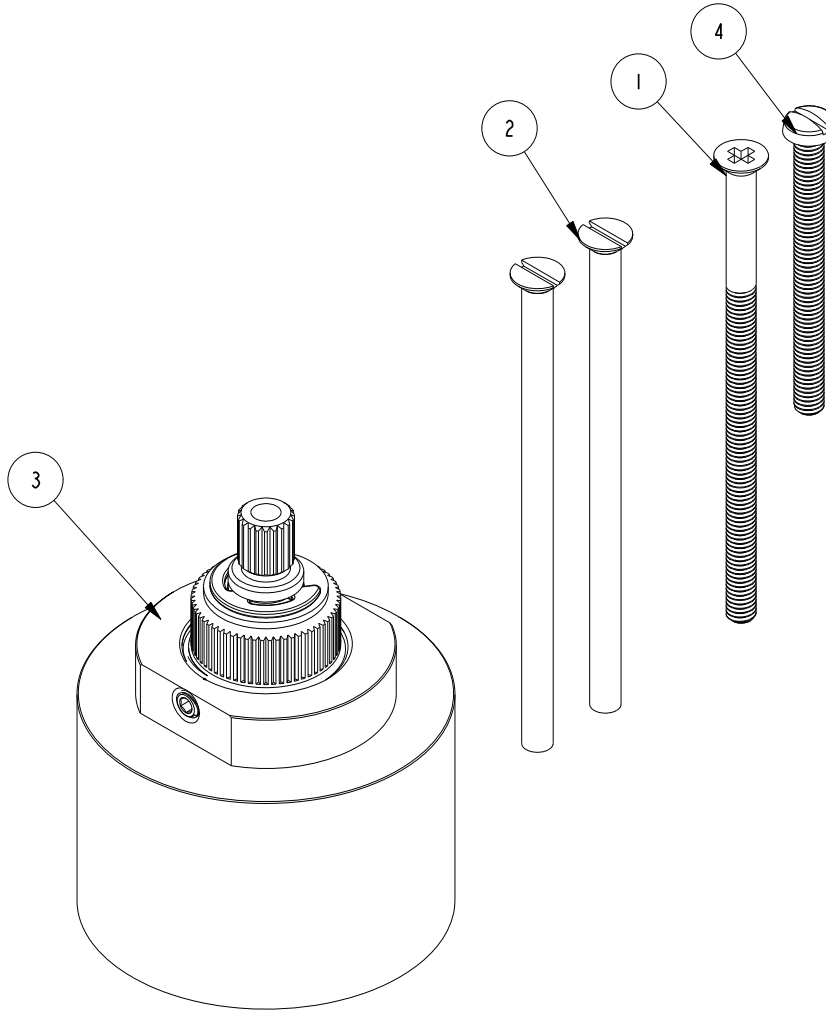


NOTES:

(N1) 1. FIT / FORM / FUNCTION SHALL FOLLOW PS-E.008.

BILL OF MATERIAL (CURRENT LEVEL)

ITEM	PT/ASSY	DESCRIPTION	TYPE	QTY.
1	92114	SCRW, M4 X .7 X 75 PHIL FLT HD SS	PART	1
2	92143	SCRW, 8-32 X 3 SLOT FLAT HD BRS	PART	2
3	2-348	EXTENSION SLEEVE ASM	ASSEMBLY	1
4	92534	SCRW, M4 X .7 X 45 SLT CHEESE HD SS	PART	1



-	D	EN-3647	06/29/18	R.S.
-	C	EN-2619	10/10/13	J.M.
-	B	EO-0861	07/23/07	-
-	A	REF EO: 0084	02/23/03	-
-	-	RELEASED	05/14/01	-
ZONE	REV	DESCRIPTION	DATE	APPROVED

COPYRIGHT 2005 BRASSTECH, INC.
THESE DRAWINGS AND THE DESIGNS
DEPICTED HEREIN ARE THE PROPRIETARY
PROPERTY OF BRASSTECH. ANY USE
OR REPRODUCTION IS SUBJECT TO
THE EXPRESS APPROVAL OF BRASSTECH.
UNAUTHORIZED USE IS STRICTLY
PROHIBITED. ALL RIGHTS RESERVED.

TESTING	-	-	-
ASSEMBLY	-	-	-
PLATING	-	-	-
POLISHING	-	NEXT ASSY	USED ON
MACHINING	-	APPLICATION	
TOOLING FIXTURE #	REMOVE ALL BURRS AND SHARP EDGES		

UNITS ARE: INCHES [MM]
TOLERANCES ARE:
FRACTIONS DECIMALS ANGLES
±1/16" .X ±.1 [2,5] ±1°
.XX ±.06 [1,5]

(X.XXX) DENOTES CRITICAL DIMS.
ALL THREADS ARE CRITICAL

BRASSTECH 2001 CARNEGIE AVE.
INCORPORATED SANTA ANA, CA 92705
(949) 417-5207

THERMO HAND EXTENSION

DWG NO.	2-260	REV	D
SCALE	1.000	REF.	-
SHEET	1	OF	1