

4	3	2	1
---	---	---	---

NOTES:

1. TO INSPECT ASSEMBLY, FOLLOW FIRST ARTICLE AND IN PROCESS INSPECTION SHEET.

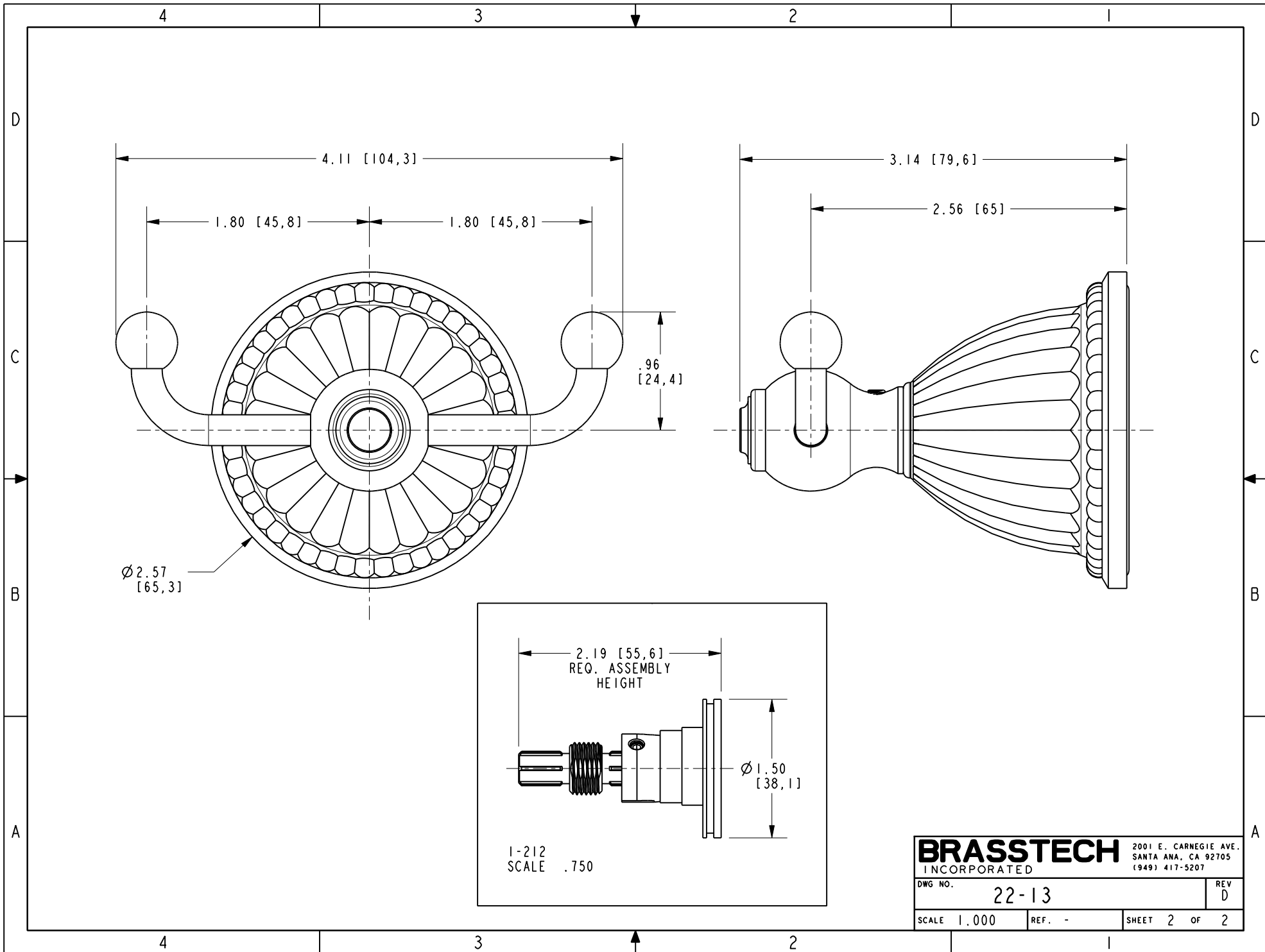
BILL OF MATERIAL (CURRENT LEVEL)

ITEM	PT/ASSY	DESCRIPTION	TYPE	QTY.
1	1-212	ACCESSORY MTG KIT	ASSEMBLY	1
2	1-125	HARDWARE KIT	ASSEMBLY	1
3	12172	ESCUTCHEON, 880 SERIES	PART	1
4	7-561	DOUBLE GARMENT HOOK POST ASSY	ASSEMBLY	1
5	92000	SCREW 8 - 32 X 1/8 SS	PART	1
6	91751	O-RING, #2-139, 50 DURO	PART	1

SCALE .500

	-	D	EN-4300t	10/25/21	R.S.	COPYRIGHT 2005 BRASSTECH, INC. THESE DRAWINGS AND THE DESIGNS DEPICTED HEREIN ARE THE PROPRIETARY PROPERTY OF BRASSTECH. ANY USE OR REPRODUCTION IS SUBJECT TO THE EXPRESS APPROVAL OF BRASSTECH. UNAUTHORIZED USE IS STRICTLY PROHIBITED. ALL RIGHTS RESERVED.	TESTING	-	-	-	UNITS ARE: INCHES [MM] TOLERANCES ARE: FRACTIONS DECIMALS ANGLES ±1/16" .X ±.1 [2.5] ±° .XX ±.06 [1.5] (X.XXX) DENOTES CRITICAL DIMS. ALL THREADS ARE CRITICAL				
	-	C	EN-3722	02/08/19	C.G.		ASSEMBLY	-	-	-					
	-	B	EN-2509c	02/21/14	-		PLATING	-	-	-					
	-	A	EN-1241a	09/14/09	-		POLISHING	-	NEXT ASSY	USED ON					
	-	-	RELEASED	08/29/03	-		MACHINING	-	APPLICATION						
ZONE	REV	DESCRIPTION	DATE	APPROVED			TOOLING FIXTURE #	REMOVE ALL BURRS AND SHARP EDGES				CHECKED	R.S.	10/25/21	DRAWN

		BRASSTECH		2001 CARNEGIE AVE. SANTA ANA, CA 92705 (949) 417-5207	
		INCORPORATED			
DOUBLE GARMENT HOOK, ASM					
BQ1					
		DWG NO. 22-13		REV D	
		SCALE .625		SHEET 1 OF 2	



BRASSTECH		2001 E. CARNEGIE AVE. SANTA ANA, CA 92705 (949) 417-5207
DWG NO.	22-13	REV D
SCALE 1.000	REF. -	SHEET 2 OF 2