

4

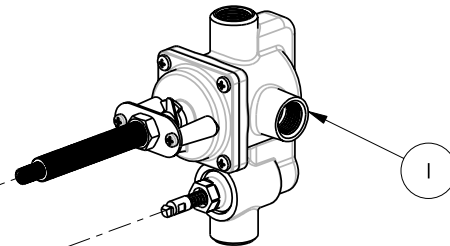
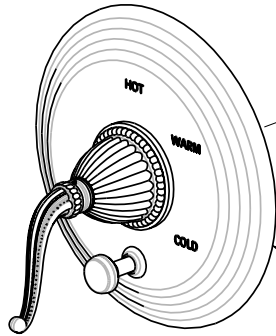
3

2

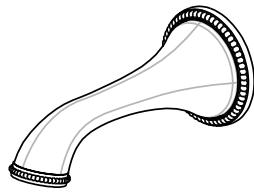
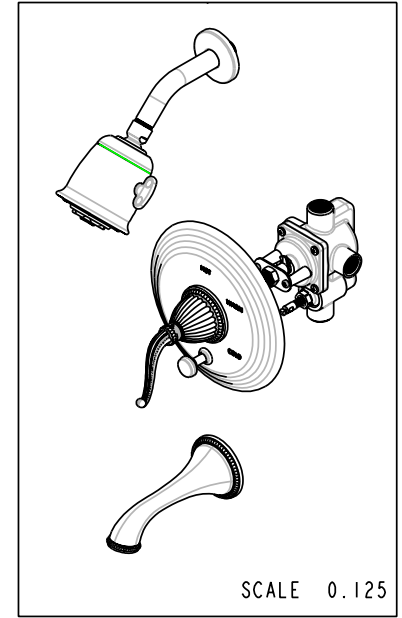
1

BILL OF MATERIAL (CURRENT LEVEL)

ITEM	PT/ASSY	DESCRIPTION	TYPE	QTY.
1	1-505	BP VALVE ASM W/DIVERTER	ASSEMBLY	1
2	3-1092BP	TRIM KIT TUB / SHOWER BP 3-1092BP	ASSEMBLY	1



2



COPYRIGHT 2005 BRASSTECH, INC. THESE DRAWINGS AND THE DESIGNS DEPICTED HEREIN ARE THE PROPRIETARY PROPERTY OF BRASSTECH. ANY USE OR REPRODUCTION IS SUBJECT TO THE EXPRESS APPROVAL OF BRASSTECH. UNAUTHORIZED USE IS STRICTLY PROHIBITED. ALL RIGHTS RESERVED.

BRASSTECH
 INCORPORATED
 2001 E. CARNEGIE AVE.
 SANTA ANA, CA 92705
 (949) 417-5207

TUB/SHOWER W/BP

ASSY. NO. 1092BP

SCALE 0.225

REF. -

SHEET 1 OF 3

B	EO-0872	09/05/07
A	EO-0224	07/01/03
-	RELEASED	02/13/02
REV	REV DESC	DATE

4

3

2

1

4

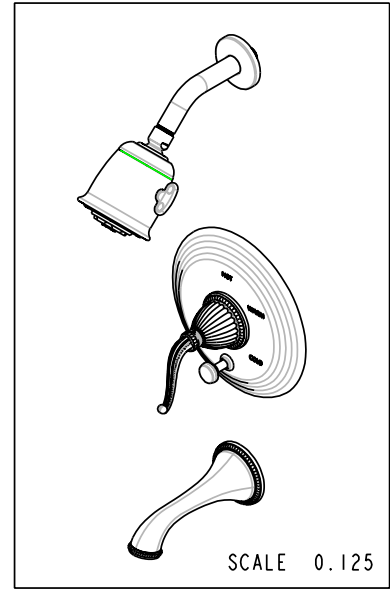
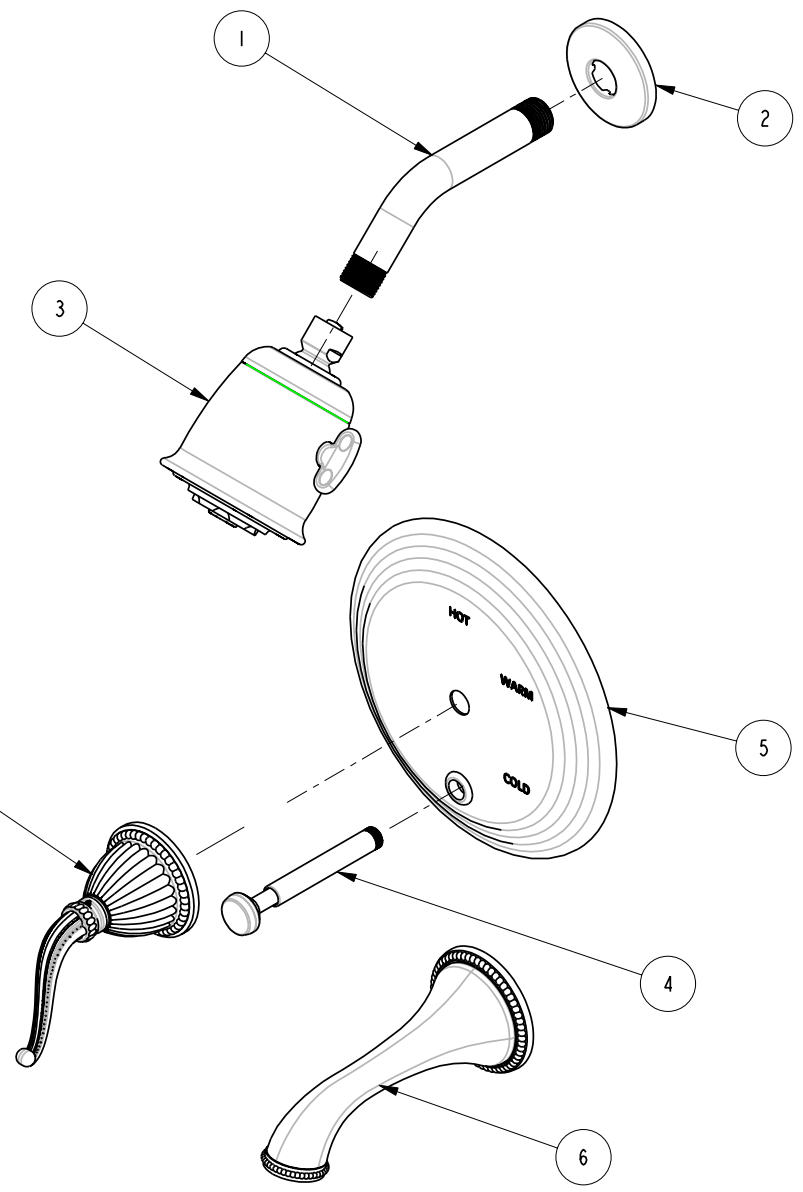
3

2

1

BILL OF MATERIAL (CURRENT LEVEL)

ITEM	PT/ASSY	DESCRIPTION	TYPE	QTY.
1	200	SHOWER ARM 6" BRASS	PART	1
2	206	SHOWER ARM FLANGE	PART	1
3	2131	BELL SHOWERHEAD	ASSEMBLY	1
4	2-217	DIVERTER TRIM KIT	ASSEMBLY	1
5	2-224	COVERPLATE BP W/DIVERTER	ASSEMBLY	1
6	2-249A	WALL TUB SPOUT ASM	ASSEMBLY	1
7	3-248	TRIM KIT - HANDLE / ESC	ASSEMBLY	1



COPYRIGHT 2005 BRASSTECH, INC. THESE DRAWINGS AND THE DESIGNS DEPICTED HEREIN ARE THE PROPRIETARY PROPERTY OF BRASSTECH. ANY USE OR REPRODUCTION IS SUBJECT TO THE EXPRESS APPROVAL OF BRASSTECH. UNAUTHORIZED USE IS STRICTLY PROHIBITED. ALL RIGHTS RESERVED.

BRASSTECH
 INCORPORATED
 2001 E. CARNEGIE AVE.
 SANTA ANA, CA 92705
 (949) 417-5207

TRIM KIT TUB / SHOWER BP 3-1092BP

ASSY. NO. 1092BP

SCALE 0.250

REF. -

SHEET 2 OF 3

B	EO-0872	09/05/07
A	EO-0224	07/01/03
-	RELEASED	02/13/02
REV	REV DESC	DATE

4

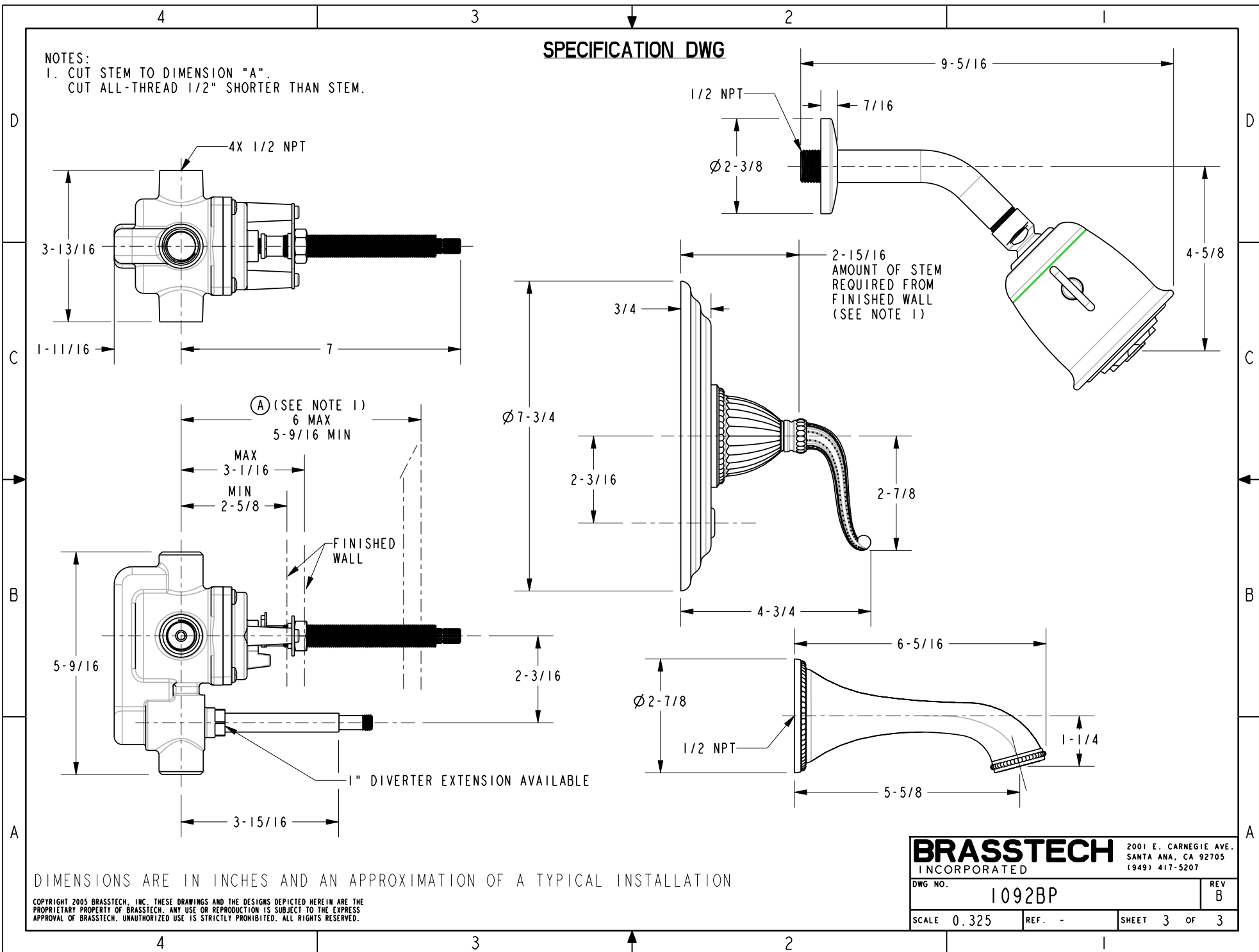
3

2

1

SPECIFICATION DWG

NOTES:
 1. CUT STEM TO DIMENSION "A".
 CUT ALL-THREAD 1/2" SHORTER THAN STEM.



Ⓐ (SEE NOTE 1)
 6 MAX
 5-9/16 MIN

MAX
 3-1/16
 MIN
 2-5/8

FINISHED WALL

1" DIVERTER EXTENSION AVAILABLE

DIMENSIONS ARE IN INCHES AND AN APPROXIMATION OF A TYPICAL INSTALLATION

COPYRIGHT 2005 BRASSTECH, INC. THESE DRAWINGS AND THE DESIGNS DEPICTED HEREIN ARE THE PROPRIETARY PROPERTY OF BRASSTECH. ANY USE OR REPRODUCTION IS SUBJECT TO THE EXPRESS APPROVAL OF BRASSTECH. UNAUTHORIZED USE IS STRICTLY PROHIBITED. ALL RIGHTS RESERVED.

BRASSTECH		2001 E. CARNEGIE AVE.	
INCORPORATED		SANTA ANA, CA 92705	
		(949) 417-5207	
DWG NO.	1092BP	REV	B
SCALE	0.325	REF.	-
		SHEET	3 OF 3