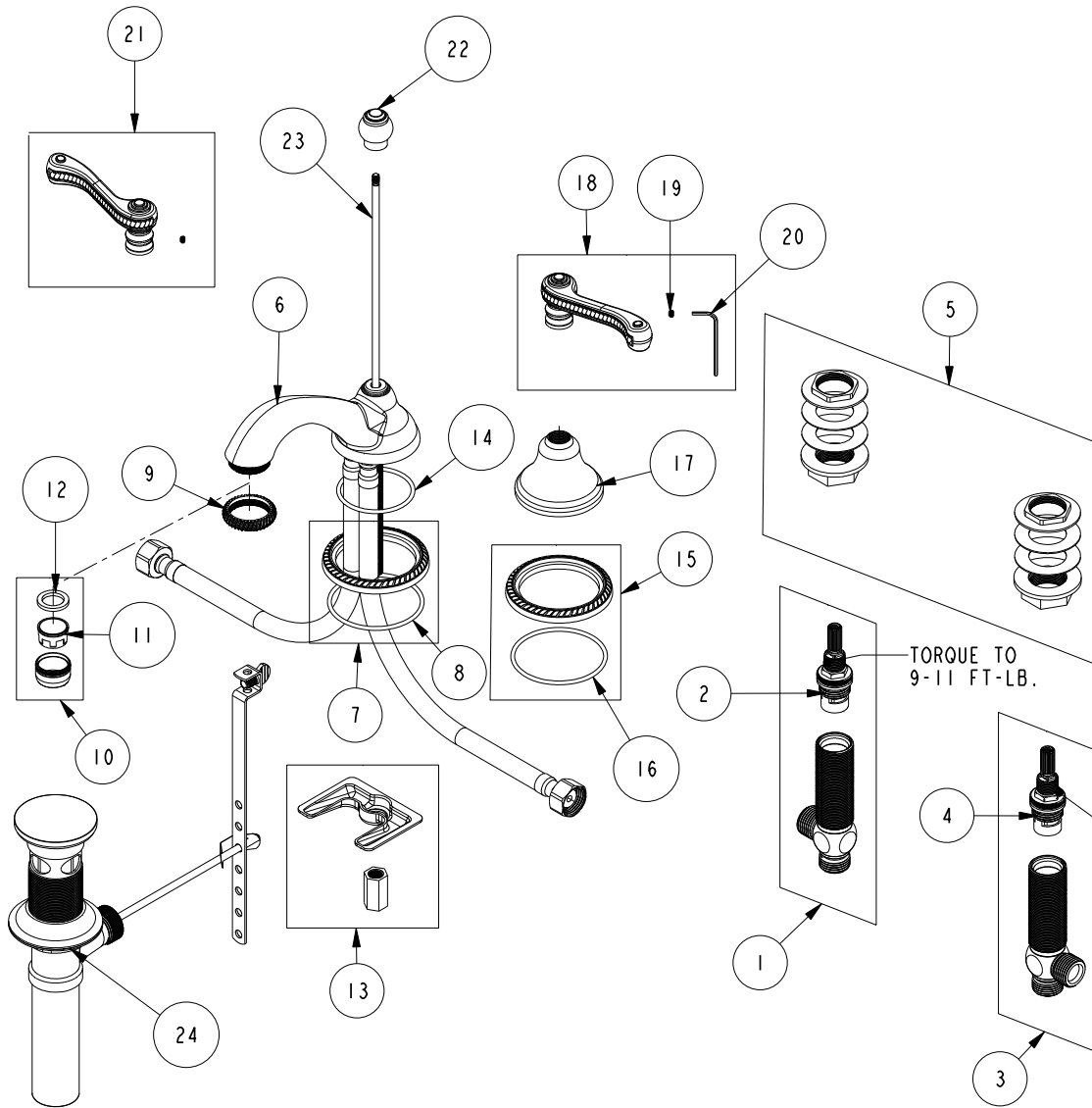


# REPLACEMENT PARTS



ITEM	PT/ASSY	SPECIFY FINISH	DESCRIPTION
1	1-527		W/S CART/BODY ASM (HOT)
2	1-002		W/S CARTRIDGE - HOT
3	1-526		W/S CART/BODY ASM (COLD)
4	1-001		W/S CARTRIDGE - COLD
5	1-027		WIDE SPREAD MOUNTING HARDWARE
6	3-345	YES	WIDE SPREAD SPOUT ASM
7	20-727	YES	ESCUTCHEON ASM
8	91755		O-RING, #2-142, EPDM, 50 DURO - GREY
9	10852	YES	WIDESPREAD SPOUT RING
10	2-627	YES	AERATOR ASM
11	12404		AERATOR INSERT, STD SIZE, 1.2 GPM
12	91014		WSHR, .59 ID X .84 OD X .095 THK, FLT, RUBBER NSF 61
13	1-514		SPOUT MOUNTING KIT ASM
14	91756		O-RING #2-134, EP, 50 DURO - GREY
15	20-727	YES	ESCUTCHEON ASM
16	91755		O-RING, #2-142, EPDM, 50 DURO - GREY
17	10437	YES	ESCUTCHEON
18	2-182	YES	HANDLE ASM - RIGHT
19	92000		SCREW 8 - 32 X 1/8 SS
20	10192		HEX KEY TOOL, #8 5/64
21	2-181	YES	HANDLE ASM - LEFT
22	10010	YES	POP-UP KNOB
23	10288	YES	3/16" POP UP ROD
24	325	YES	POP UP ASSEMBLY

LAVATORY FAUCET  
980

REV G EN-4728 10/23/23 APPROVED RS

**NEWPORT BRASS.**

t: 949.417.5207 | www.newportbrass.com