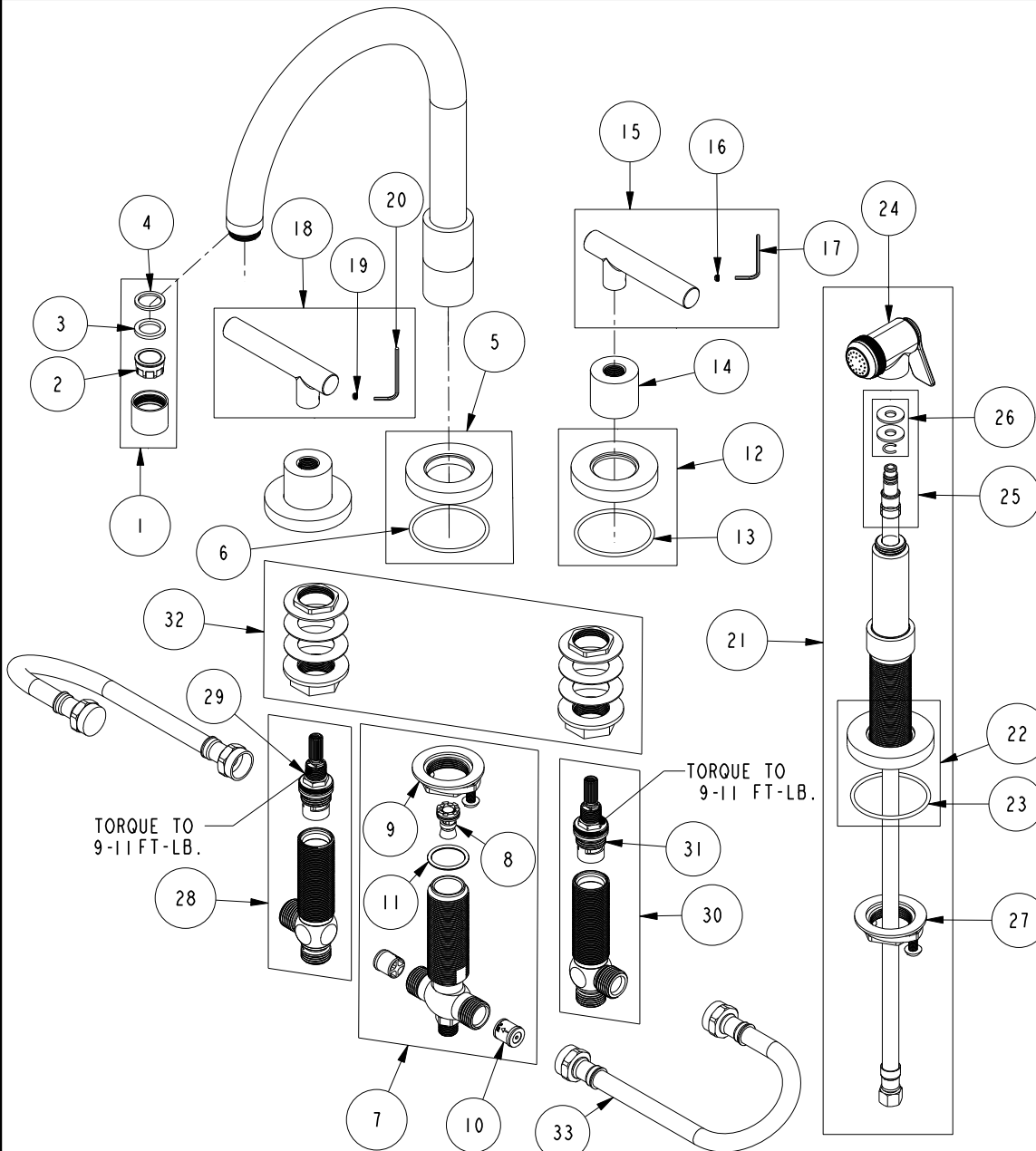


# REPLACEMENT PARTS



ITEM	PT/ASSY	SPECIFY FINISH	DESCRIPTION
1	2-112	YES	AERATOR ASM
2	11915		AERATOR INSERT STD, 1.8 GPM
3	91014		WSHR, .59 ID X .84 OD X .095 THK, FLT, RUBBER NSF 61
4	91040		WSHR, .590 ID X .825 OD X .072 THK, FLT, RUBBER NSF 61
5	2-101	YES	SPOUT BASE RING ASM
6	91753		O-RING, # 2-136, EP, 50 DURO - GREY
7	1-536		DIVERTER ASM TEE
8	11208		DIVERTER
9	1-393		1-1/8 18 UNEF MOUNTING KIT
10	11046		CHECK VALVE CARTRIDGE
11	91288		O-RING, #2-119, EPDM, 65-75 DURO
12	2-100	YES	ESCUTCHEON - ASSEMBLY
13	91753		O-RING, # 2-136, EP, 50 DURO - GREY
14	10620	YES	BONNET
15	2-111C	YES	HANDLE LEVER ASM, COLD
16	92000		SCREW 8 - 32 X 1/8 SS
17	10192		HEX KEY TOOL, #8 5/64
18	2-111H	YES	HANDLE LEVER ASM, HOT
19	92000		SCREW 8 - 32 X 1/8 SS
20	10192		HEX KEY TOOL, #8 5/64
21	1291	YES	KITCHEN SPRAY HEAD
22	2-100	YES	ESCUTCHEON - ASSEMBLY
23	91753		O-RING, # 2-136, EP, 50 DURO - GREY
24	2-119B	YES	SPRAY HEAD ASM
25	1-778		SIDE SPRAY HOSE ASSY
26	1-397		SIDE SPRAY WASHERS
27	1-393		1-1/8 18 UNEF MOUNTING KIT
28	1-527		W/S CART/BODY ASM (HOT)
29	1-002		W/S CARTRIDGE - HOT
30	1-526		W/S CART/BODY ASM (COLD)
31	1-001		W/S CARTRIDGE - COLD
32	1-027		WIDE SPREAD MOUNTING HARDWARE
33	10376_FIG1		FLEX HOSE 12 IN.

**KITCHEN FCT W/VEG SPRY**  
**9911L**

REV D EN-4673 06/22/23 APPROVED RS

**NEWPORT BRASS.**

t: 949.417.5207 | www.newportbrass.com