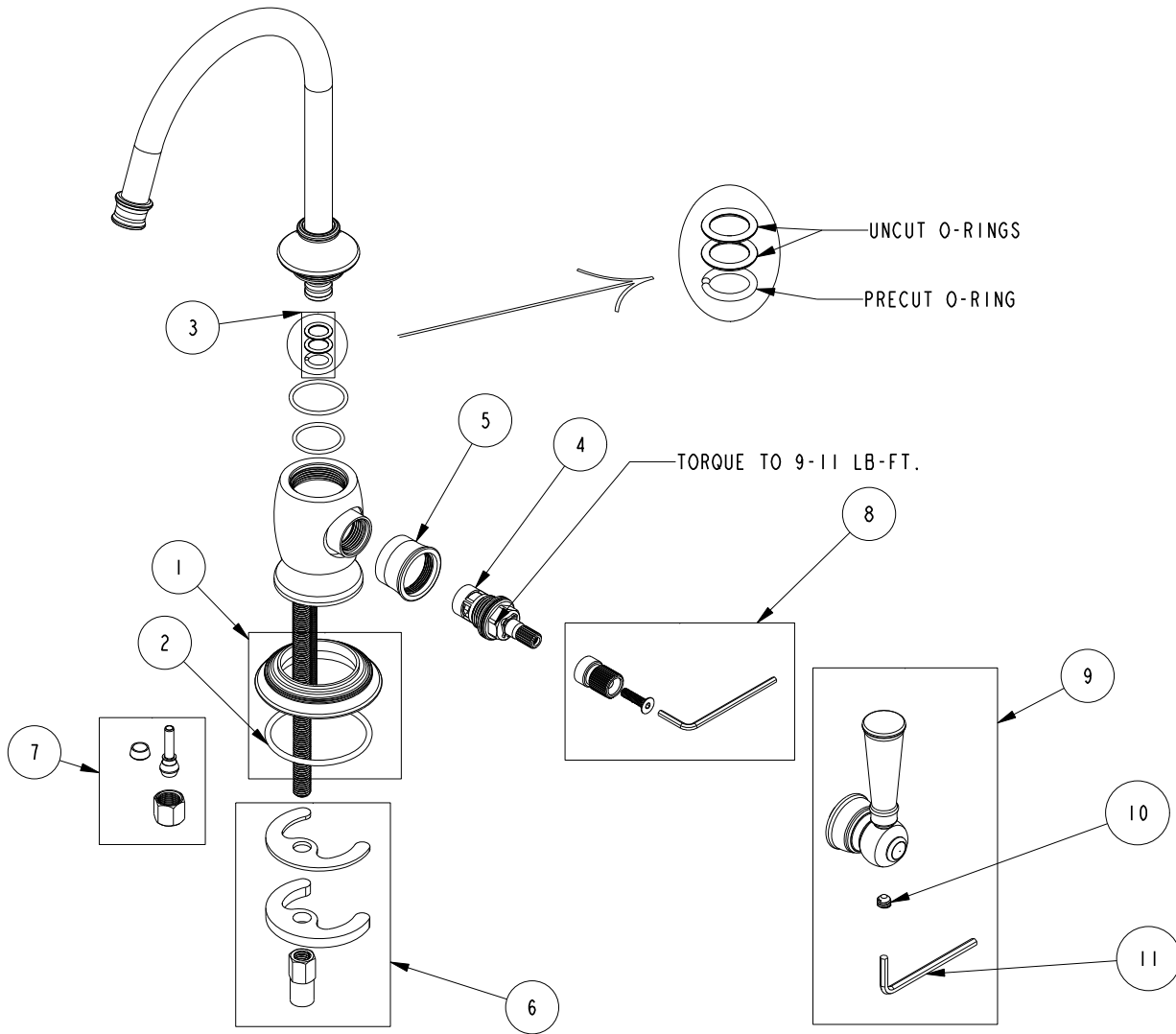


# REPLACEMENT PARTS

ITEM	PT/ASSY	SPECIFY FINISH	DESCRIPTION
1	20-792	YES	ESCUTCHEON ASM
2	91762		O-RING, #2-132, EP, 50 DURO - GREY
3	10-310		WATER DISPENSER SPOUT O-RING KIT
4	1-134		CARTR 3/8 HOT 1/4 TR
5	13682	YES	BONNET
6	1-491		SPOUT MOUNTING KIT
7	5-007		1/4 COMP KIT
8	10-306		CARTRIDGE STEM ADAPTER KIT
9	20-793	YES	HANDLE LEVER ASM
10	92017		SCRW, 1/4-20 X 3/16 SKT HD CUP PT SS
11	92422		HEX KEY, 1/8" ALLOY STEEL



**COLD WATER DISPENSER**  
**2470-5623**

REV N EN-4713 04/01/24

**NEWPORT BRASS.**

t: 949.417.5207 | www.newportbrass.com