

Lockset Functions

FA358 Exterior Entrance

FA359 Entrance Interior

FA360 Keyed 1-Side

FA362 Keyed 2-Sides

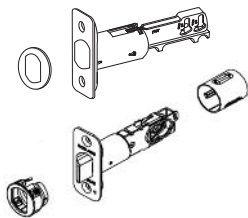
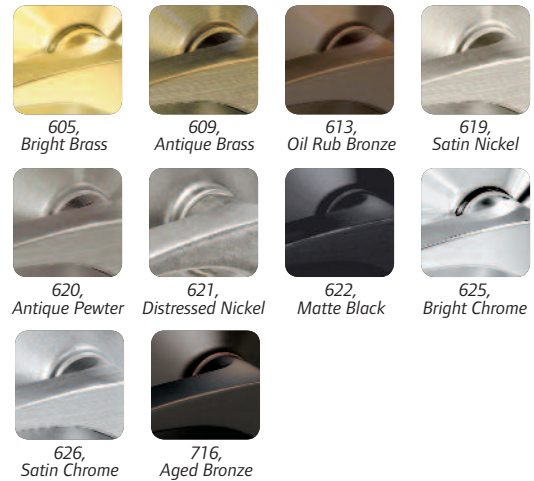
Standard Latch & Strike Configurations

Box Pack

Function	Std. Latch	Std. Strike
FA359	16-235	10-248
FA360	16-235	10-248
FA362	16-235	10-248

Visual Pack

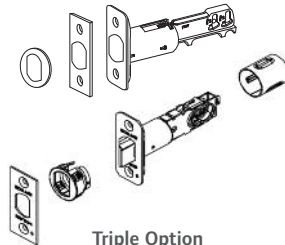
Function	Std. Latch	Std. Strike
FA360 V	16-235	10-254



Dual Option
(16-233 & 12-313)

Part Number: **16-242**
 Faceplate Size: 1" x 2-1/4"
 Spring Latch Diameter: 7/8"
 Deadbolt Latch Diameter: 7/8"
 Backset: 2-3/8" or 2-3/4"
 Finishes: 605, 609, 613, 619, 620, 621, 622, 625, 626, 716

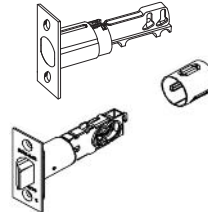
Attached 1/4" radius round corner, includes drive-in faceplate



Triple Option
(16-210 & 12-300)

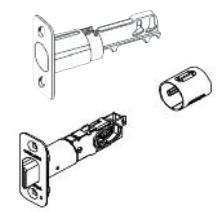
Part Number: **16-235**
 Faceplate Size: 1" x 2-1/4"
 Spring Latch Diameter: 7/8"
 Deadbolt Latch Diameter: 7/8"
 Backset: 2-3/8" or 2-3/4"
 Finishes: 605, 609, 613, 619, 620, 621, 622, 625, 626, 716

Attached 1/4" radius round corner, includes square corner and drive-in faceplates



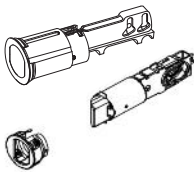
Square Corner
(16-200 & 12-304)

Part Number: **16-236**
 Faceplate Size: 1" x 2-1/4"
 Spring Latch Diameter: 7/8"
 Deadbolt Latch Diameter: 7/8"
 Backset: 2-3/8" or 2-3/4"
 Finishes: 605, 609, 613, 619, 620, 621, 622, 625, 626, 716



1/4" Radius Round Corner
(16-201 & 12-302)

Part Number: **16-237**
 Faceplate Size: 1" x 2-1/4"
 Spring Latch Diameter: 7/8"
 Deadbolt Latch Diameter: 7/8"
 Backset: 2-3/8" or 2-3/4"
 Finishes: 605, 609, 613, 619, 620, 621, 622, 625, 626, 716



Circular Drive-In
(16-202 & 12-303)

Part Number: **16-238**
 Faceplate Size: Not Applicable
 Spring Latch Diameter: 7/8"
 Deadbolt Latch Diameter: 7/8"
 Backset: 2-3/8" or 2-3/4"
 Finish: 626

FA Series Handleset Default Strike

Part Number: **10-248**
 Square Corner and Round Corner Latch Strike,
 Square Corner Deadbolt Strike

Includes latch strike 10-063 and deadbolt strike 10-094