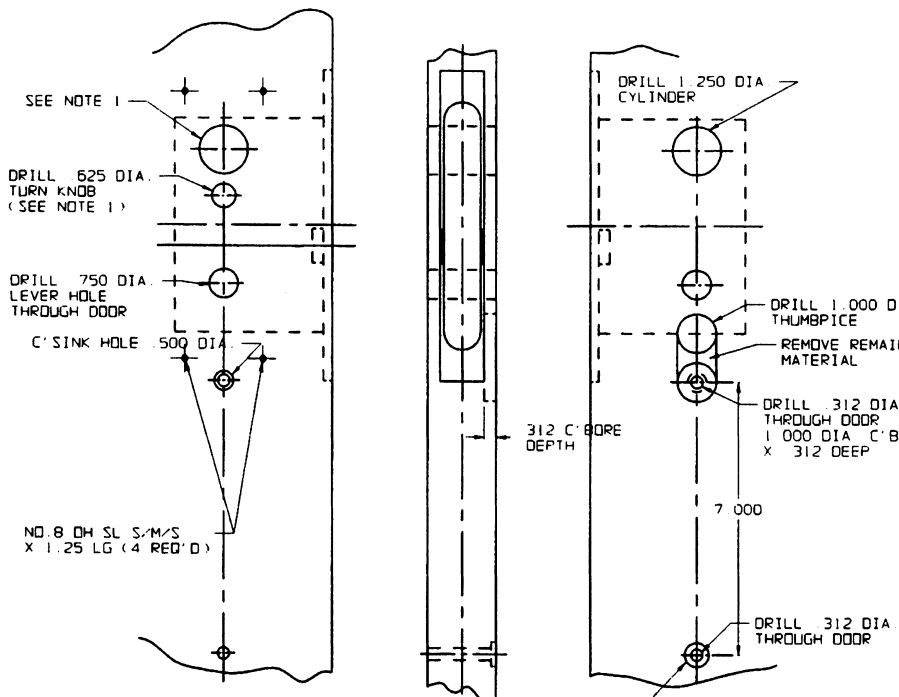


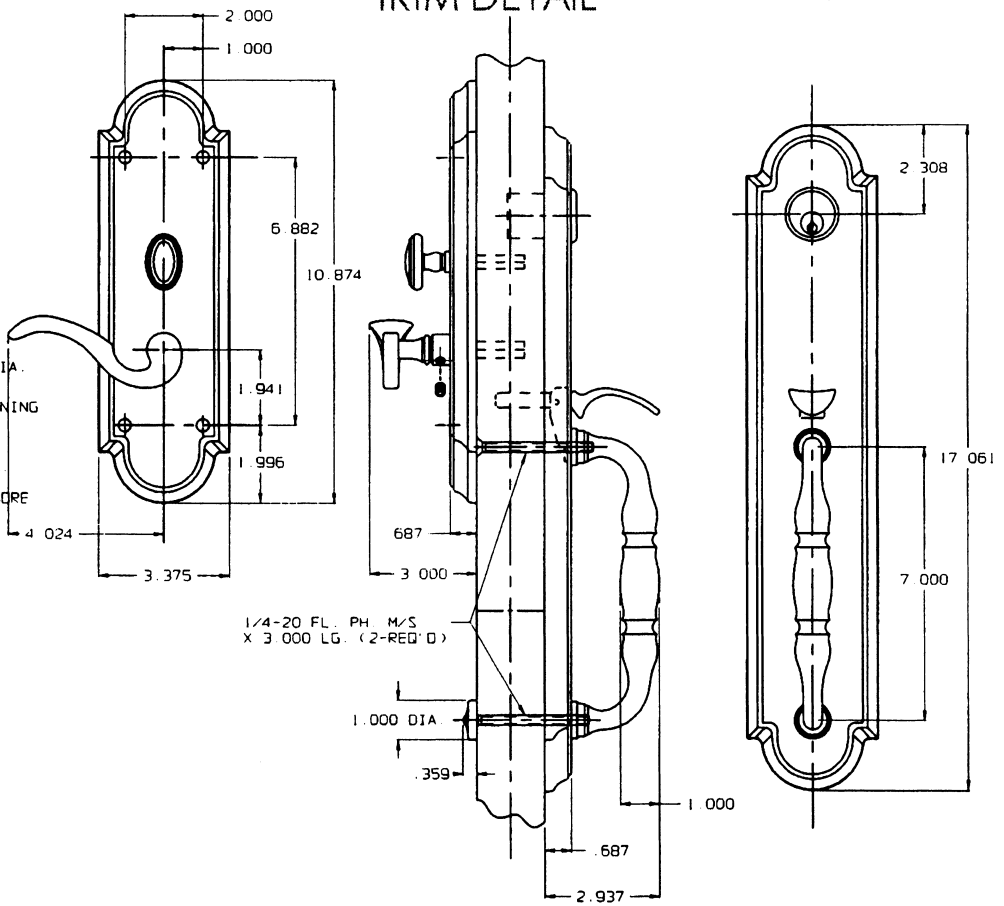
DOOR DETAIL



.625 DIA. C'BORE X .125 DEEP (OUTSIDE ONLY)

TRIM DETAIL

(DUAL FUNCTION ILLUSTRATED)



- NOTE:
- 1) WHEN PREPARING DOOR FOR DBL FUNCTION, OMIT DRILLING OF .625 DIA. TURN KNOB HOLE (INSIDE) DRILL A 1.250 DIA. CYLINDER HOLE INSTEAD, USING THE SAME CENTER LINE AS THE OUTSIDE CYLINDER HOLE
 - 2) DRILL ALL HOLES HALF WAY THROUGH DOOR UNLESS OTHERWISE SPECIFIED.
 - 3) FOR ADDITIONAL LOCK AND DOOR CUTOUT DIMENSIONS, SEE APPROPRIATE LOCK TEMPLATE
 - 4) INSTALLATION PLATES ARE NOT REQUIRED FOR THIS TRIM

DO NOT SCALE DRAWING



6544 HAMILTON

TEMPLATE NO. VARIATIONS

TEMPLATE NO.

© 1994 BY BALDWIN HARDWARE CORPORATION

1544

EFFECTIVE: 2-3-97